

NO	DESCRIPTION	NO	DESCRIPTION
1C	CARGO TANK VALVE	12C	BURP VALVE RETURN TO CARGO TANK
2C	LOAD VALVE	13C	CARGO HEADER BLOCK VALVE
3C	MASTER SUCTION VALVE	15C	BYPASS VALVE (AROUND CHECK VALVE)
4C	DISCHARGE VALVE	19C	CARGO HEADER
5C	HEADER VALVE	30C	CARGO PIPELINE
8C	RELIEF VALVE	37C	CARGO DROP
9C	CHECK VALVE	56C	PRESSURE RELIEF VALVE
10C	BURP VALVE	—	— ABOVE DECK PIPING
11C	BLEED OFF VALVE	- - -	- - - BELOW DECK PIPING

NOTE 1: CONTAINMENT P/S

REV.	DATE	BY	CHK	APP	REVISION DESCRIPTION
0	06/13/24	MRV	DDA	WHI	ISSUED FOR APPROVAL

KIRBY INLAND MARINE 

**CARGO
PIPING FLOW DIAGRAM**

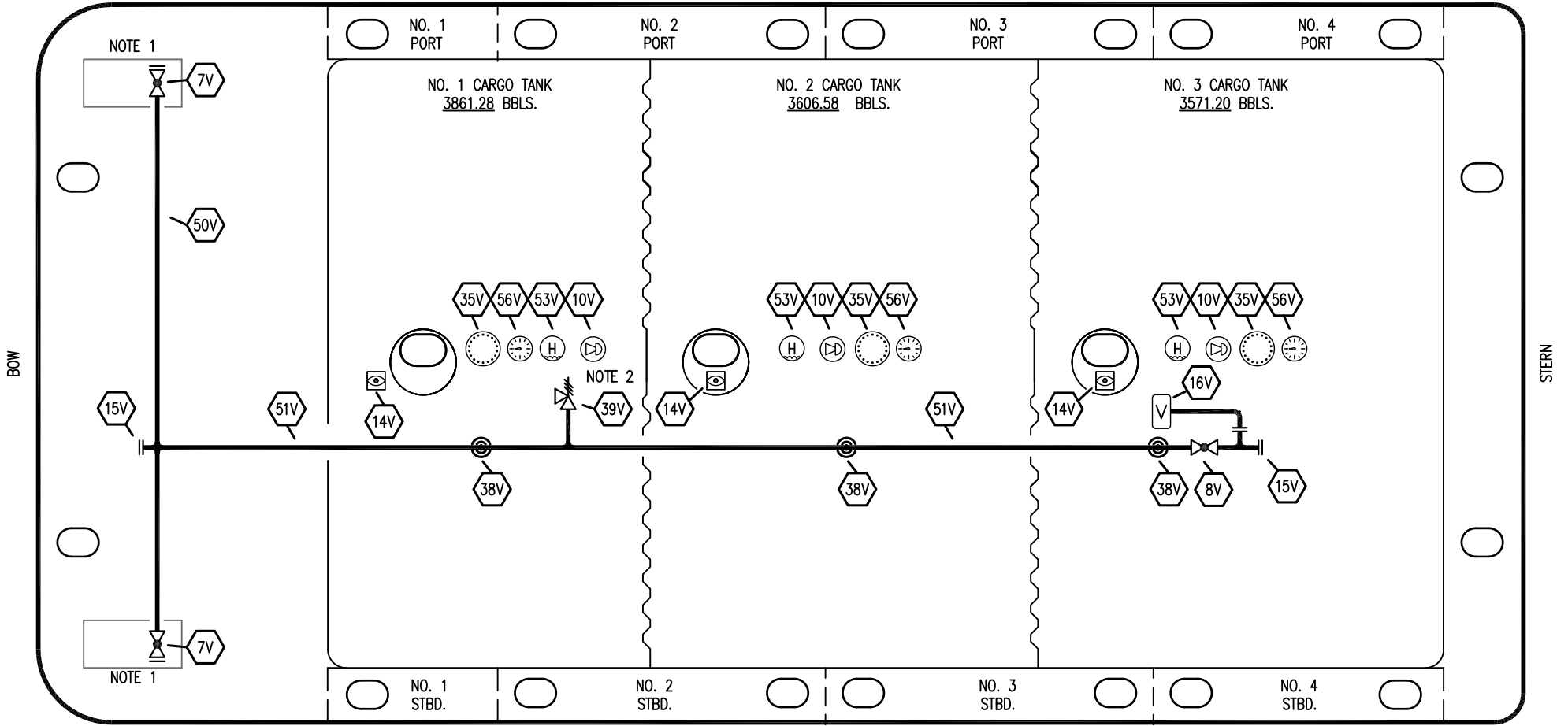
SCALE: NONE
PAGE: 1 OF 4

KIRBY 11364

REV. **0**

EX. FMT 1036

STARBOARD



BOW

STERN


PORT

- | | | | |
|-----|---------------------------|-----|-----------------------|
| NO | DESCRIPTION | NO | DESCRIPTION |
| 7V | HEADER VALVE | 38V | VAPOR PENETRATION |
| 8V | VENT STACK VALVE | 39V | PRESSURE/VACUUM VALVE |
| 10V | HIGH LEVEL/OVERFILL ALARM | 50V | VAPOR HEADER |
| 14V | SIGHT GLASS W/ GAUGE TREE | 51V | VAPOR PIPELINE |
| 15V | INSPECTION PORT | 53V | ONE METER STICK GAUGE |
| 16V | VAPOR VENT STACK | 56V | GAUGE POINT |
| 35V | SPARE (NOZZLE) | — | ABOVE DECK PIPING |

NOTE 2: P/V VALVE SETTINGS: 3-PSI PRESSURE; 1-PSI VACUUM
 NOTE 1: CONTAINMENT P/S

EX. FMT 1036

0	06/13/24	MRV	DDA	WHI	ISSUED FOR APPROVAL	
REV.	DATE	BY	CHK	APP	REVISION	DESCRIPTION

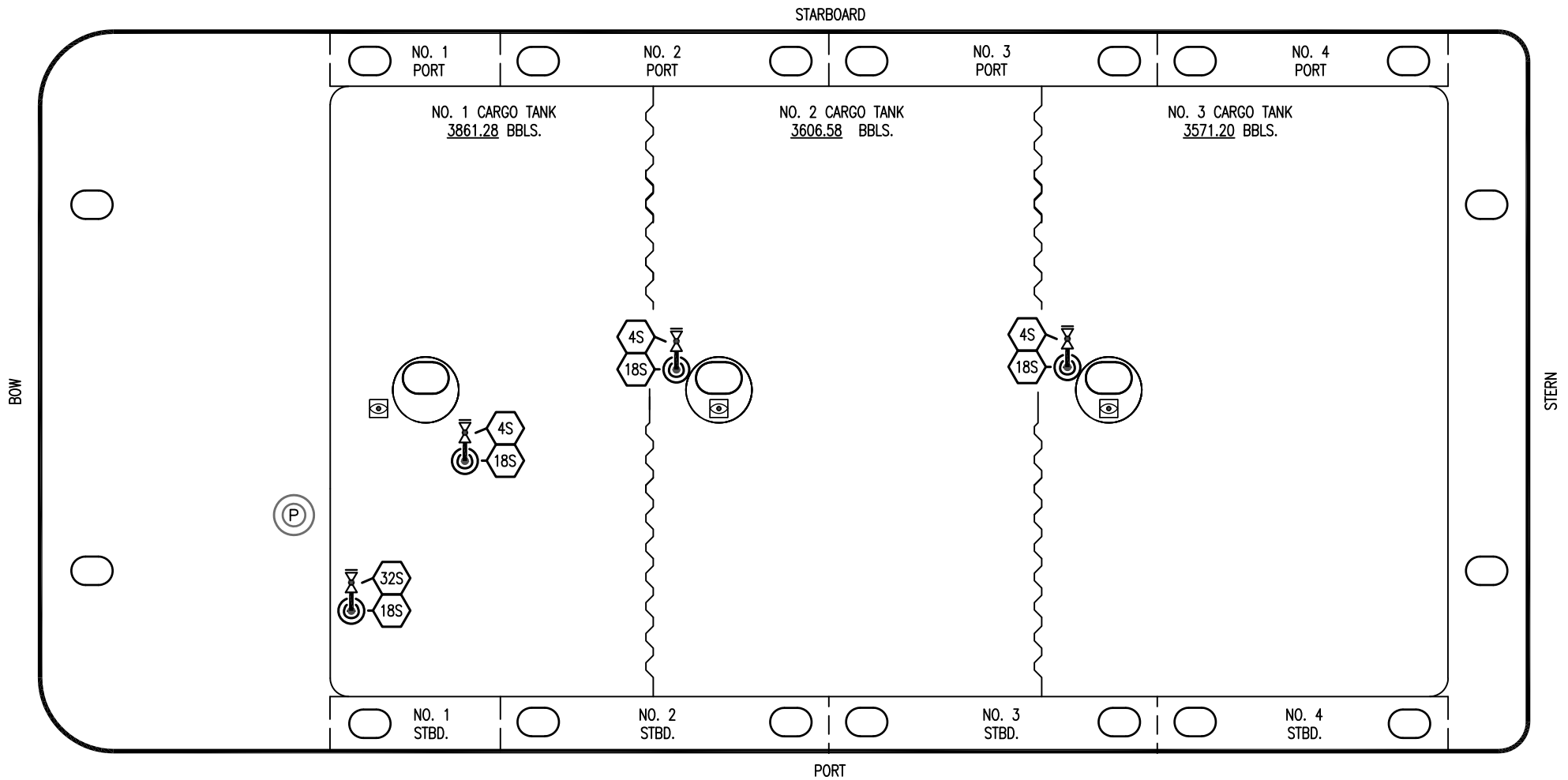
KIRBY INLAND MARINE 

**VAPOR
PIPING FLOW DIAGRAM**

KIRBY 11364

SCALE: NONE
PAGE: 2 OF 4

REV. **0**




- | NO | DESCRIPTION |
|-----|---------------------------|
| 4S | CARGO TANK SUCTION VALVE |
| 18S | STRIPPING DROP |
| 32S | PUMP WELL STRIPPING VALVE |
| — | ABOVE DECK PIPING |

NOTE 1: CONTAINMENT P/S

EX. FMT 1036

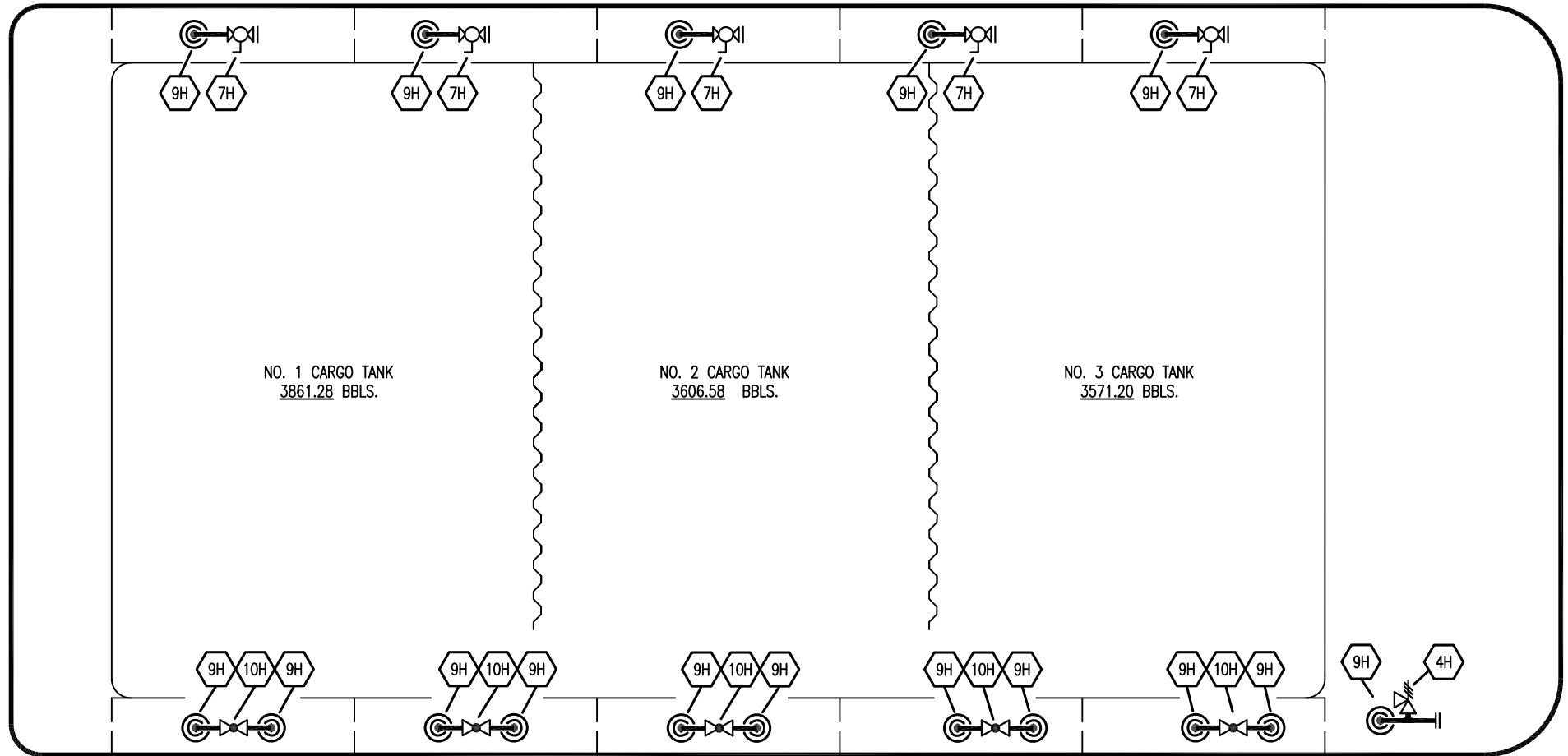
REV.	DATE	BY	CHK	APP	REVISION DESCRIPTION
0	06/13/24	MRV	DDA	WHI	ISSUED FOR APPROVAL

 KIRBY INLAND MARINE	
STRIPPING PIPING FLOW DIAGRAM	
SCALE: NONE PAGE: 3 OF 4	KIRBY 11364
REV. 0	REV. 0

STARBOARD

BOW

STERN



PORT

NO. 1 CARGO TANK
3861.28 BBLs.

NO. 2 CARGO TANK
3606.58 BBLs.

NO. 3 CARGO TANK
3571.20 BBLs.

- | | |
|-----|-------------------|
| NO | DESCRIPTION |
| 4H | RELIEF VALVE |
| 7H | CONDENSATE OUTLET |
| 9H | STEAM DROP |
| 10H | SUPPLY VALVE |
| | ABOVE DECK PIPING |

EX: FMT 1036

0	06/13/24	MRV	DDA	WHI	ISSUED FOR APPROVAL
REV.	DATE	BY	CHK	APP	REVISION DESCRIPTION

KIRBY INLAND MARINE

**STEAM
PIPING FLOW DIAGRAM**

SCALE: NONE	KIRBY 11364	REV. 0
PAGE: 4 OF 4		