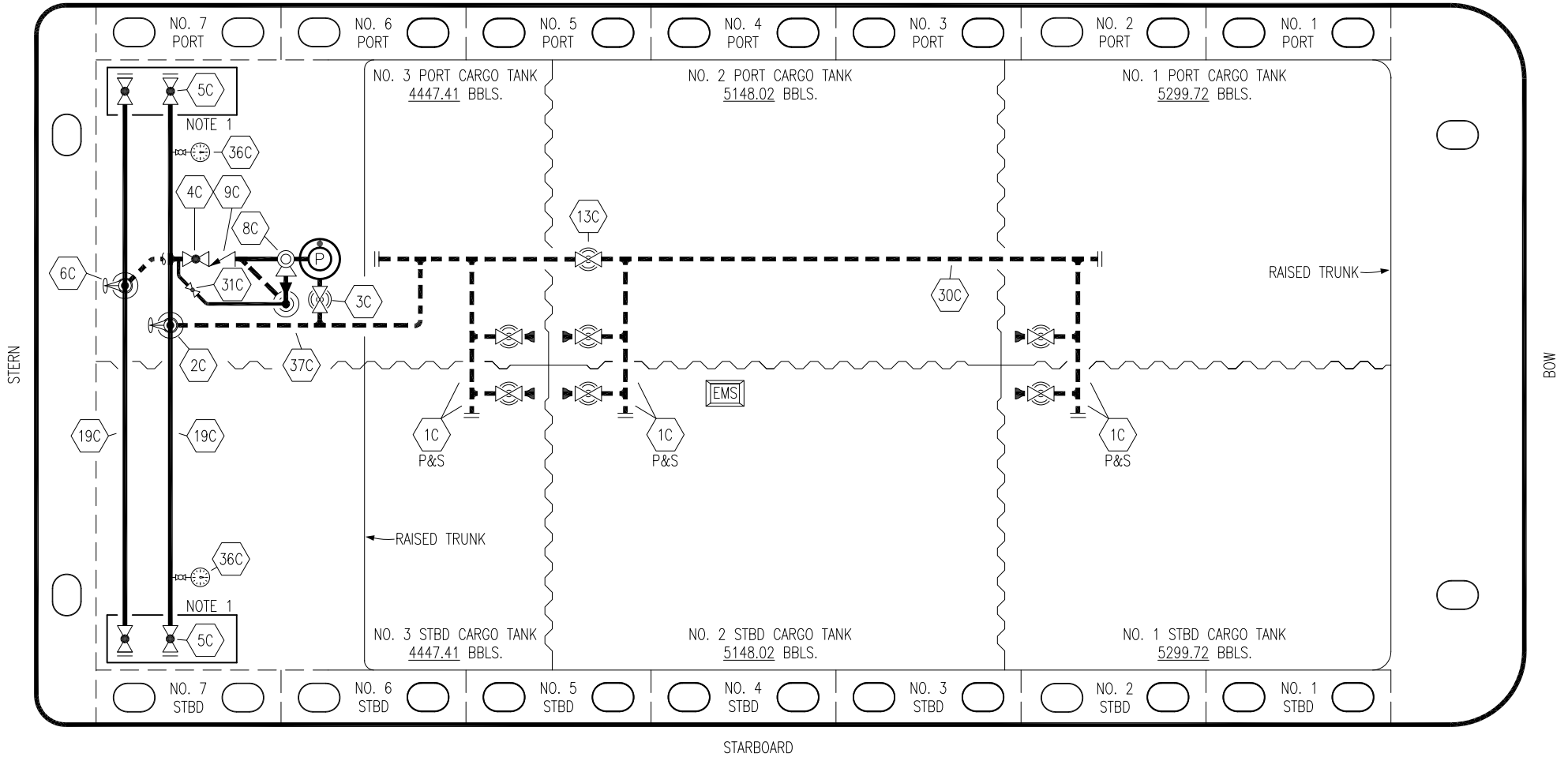


PORT



- | | | | |
|----|----------------------|-------|--------------------------|
| NO | DESCRIPTION | NO | DESCRIPTION |
| 1C | CARGO TANK VALVE | 13C | CARGO PIPING BLOCK VALVE |
| 2C | LOAD VALVE | 19C | CARGO HEADER |
| 3C | MASTER SUCTION VALVE | 30C | CARGO PIPELINE |
| 4C | DISCHARGE VALVE | 31C | BYPASS VALVE |
| 5C | HEADER VALVE | 36C | PRESSURE GAUGE |
| 6C | SALVAGE VALVE | 37C | CARGO DROP |
| 8C | RELIEF VALVE | — | — ABOVE DECK PIPING |
| 9C | CHECK VALVE | - - - | BELOW DECK PIPING |

NOTE 1: CONTAINMENT P/S

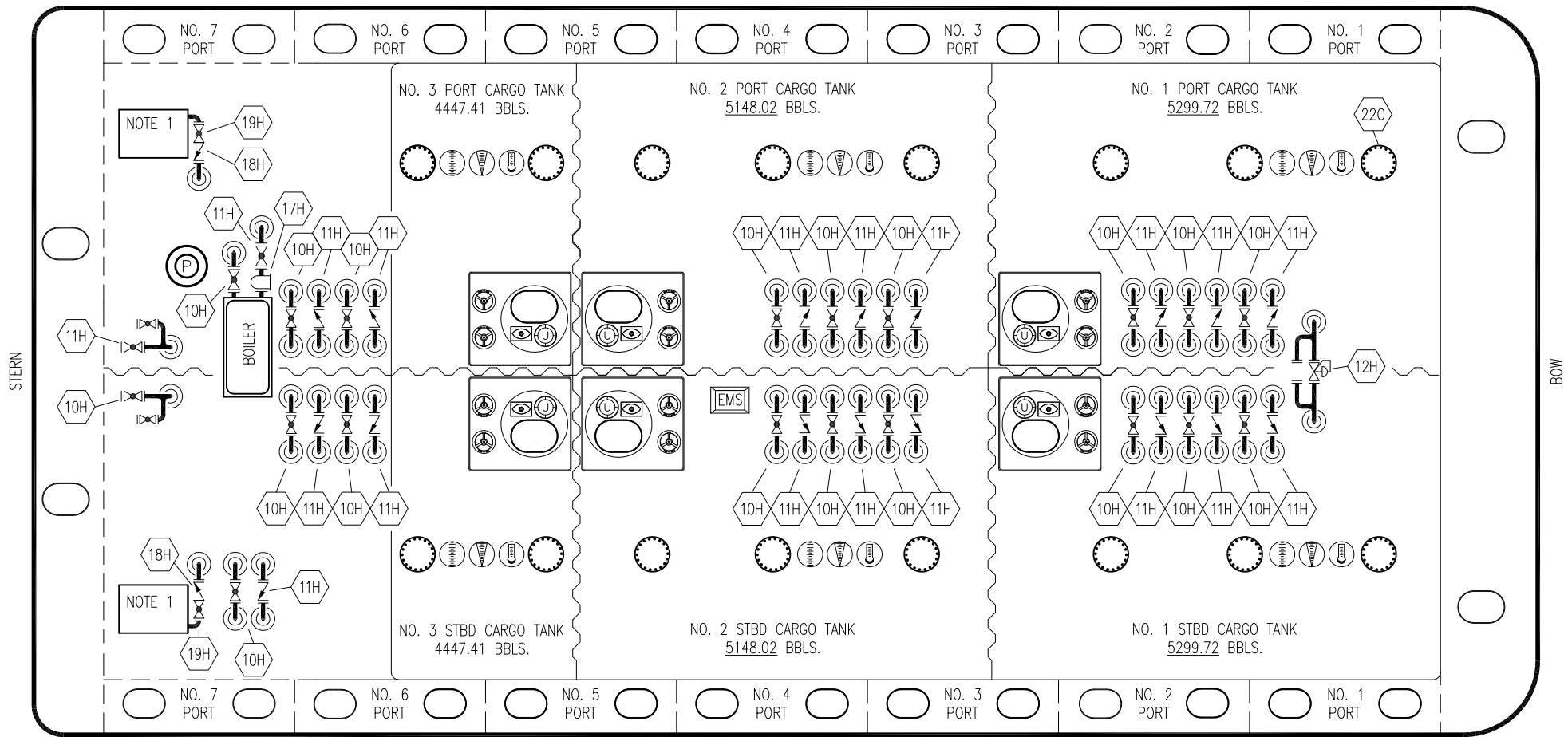
0	05/07/20	MRV	DDA	ISSUED FOR APPROVAL
REV.	DATE	BY	CHK	APP
				REVISION DESCRIPTION

TRINITY

KIRBY INLAND MARINE

**CARGO
PIPING FLOW DIAGRAM**

SCALE: NONE	EBL 2999	PAGE: 1 OF 4
		REV. 0




- | NO | DESCRIPTION |
|-----|----------------------|
| 10H | SUPPLY VALVE |
| 11H | RETURN |
| 12H | PRESSURE REGULATOR |
| 13H | BY-PASS |
| 16H | ISOLATION VALVE |
| 17H | BASKET STRAINER |
| 18H | CHECK VALVE |
| 19H | DRIP PAN DRAIN VALVE |

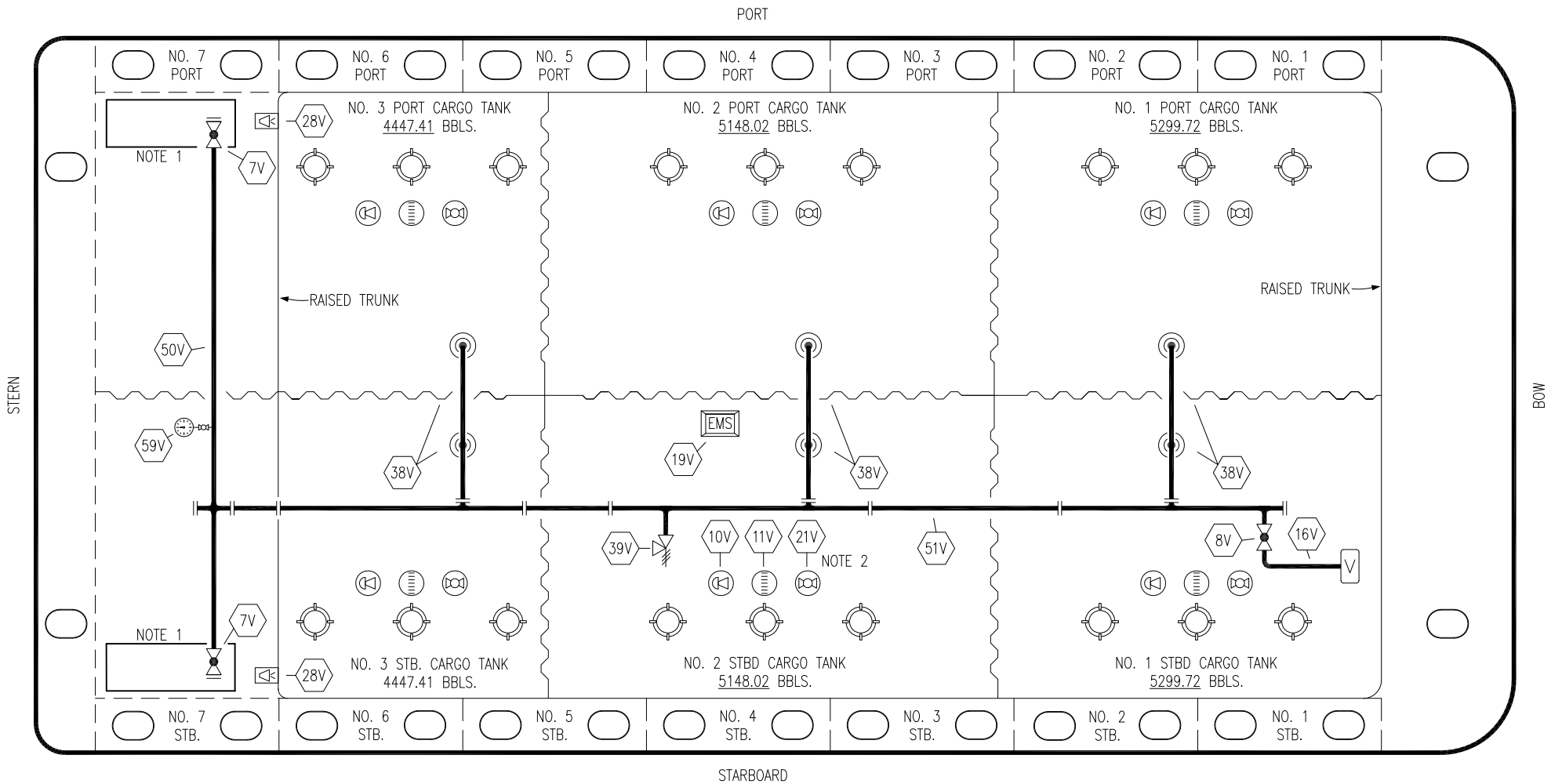
— ABOVE DECK PIPING

NOTE 1: 6 BARREL DRIP PAN

TRINITY MARINE

0	05/07/20	MRV	DDA	ISSUED FOR APPROVAL
REV.	DATE	BY	CHK	APP
				REVISION DESCRIPTION

 KIRBY INLAND MARINE	
HOT OIL PIPING FLOW DIAGRAM	
SCALE: NONE	EBL 2999
PAGE: 2 OF 4	REV. 0



NO	DESCRIPTION	NO	DESCRIPTION
7V	8" HEADER VALVE	28V	DOCK CONNECTION ALARM
8V	8" VENT STACK VALVE	38V	8" VAPOR PENETRATION (⊙)
10V	HIGH LEVEL/OVERFILL ALARM	39V	PRESSURE/VACUUM VALVE
11V	1-METER GAUGE STICK	50V	8" VAPOR HEADER
16V	VAPOR VENT STACK	51V	8" VAPOR PIPELINE
19V	EMERGENCY ENGINE SHUT DOWN	59V	PRESS/VAC GAUGE
21V	2" HERMETIC GAUGE	—	ABOVE DECK PIPING

NOTE 2: TYPICAL RIGGING IN EACH TANK

NOTE 1: CONTAINMENT P/S

REV.	DATE	BY	CHK	APP	REVISION DESCRIPTION
0	05/07/20	MRV	DDA		ISSUED FOR APPROVAL

KIRBY INLAND MARINE 

**VAPOR
PIPING FLOW DIAGRAM**

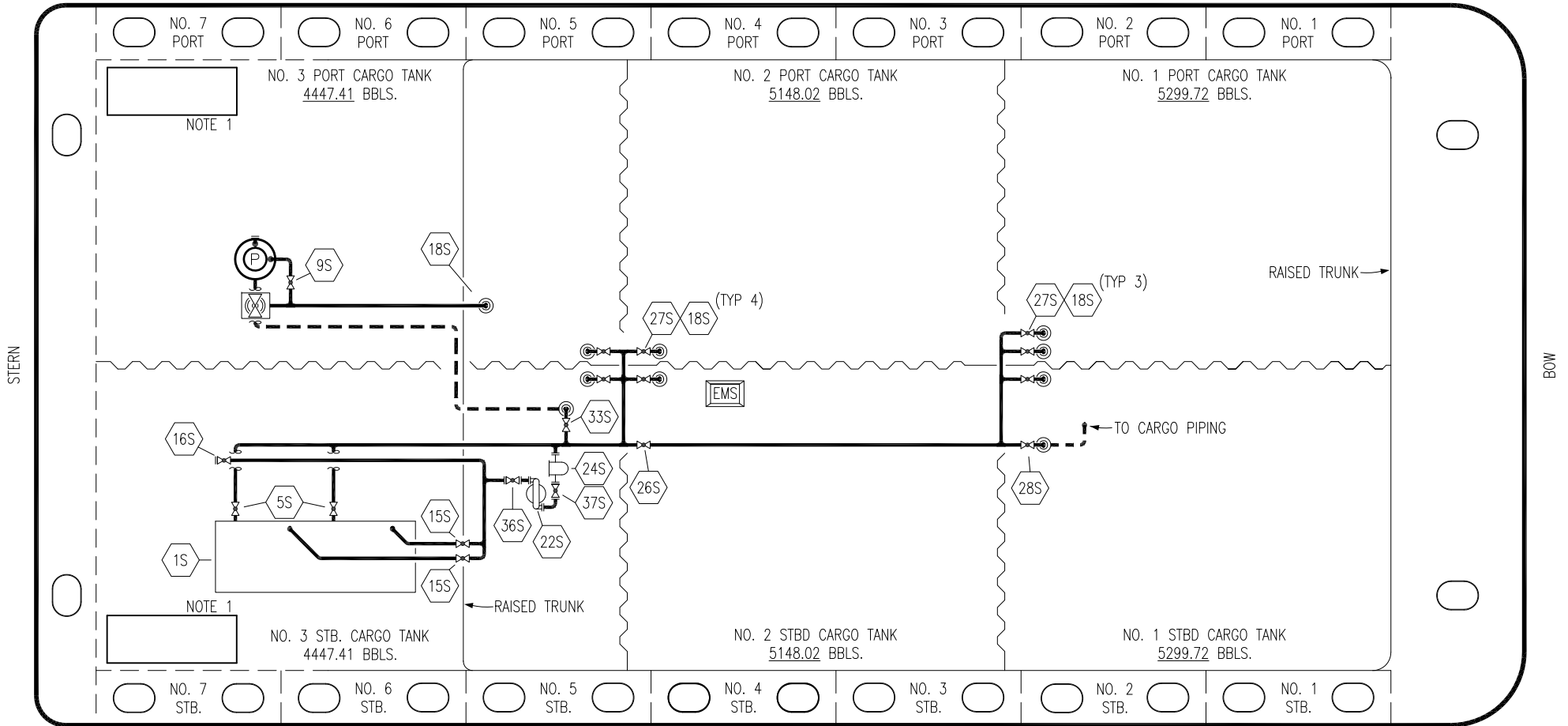
SCALE: NONE
PAGE: 3 OF 4

EBL 2999

REV. **0**

TRINITY

PORT



NO	DESCRIPTION	NO	DESCRIPTION
1S	SLOP TANK	28S	CARGO PIPING SUCTION
5S	SLOP TANK SUCTION VALVE	33S	PUMP WELL SUCTION
9S	BURP VALVE	36S	STRIPPING PUMP DISCHARGE
15S	DISCHARGE VALVE	45S	STRIPPING PUMP SUCTION VALVE
16S	REMOTE SUCTION CONNECTION	—	— ABOVE DECK PIPING
18S	TYP. STRIPPING PENETRATION	---	--- BELOW DECK PIPING
22S	STRIPPING PUMP		
24S	BASKET STRAINER		
26S	STRIPPING HEADER BLOCK VALVE		
27S	SUMP SUCTION VALVE		

NOTE 1: CONTAINMENT P/S

REV.	DATE	BY	CHK	APP	REVISION DESCRIPTION
0	05/07/20	MRV	DDA		ISSUED FOR APPROVAL

TRINITY

KIRBY INLAND MARINE

**STRIPPING
PIPING FLOW DIAGRAM**

SCALE: NONE	EBL 2999	REV. 0
PAGE: 4 OF 4		