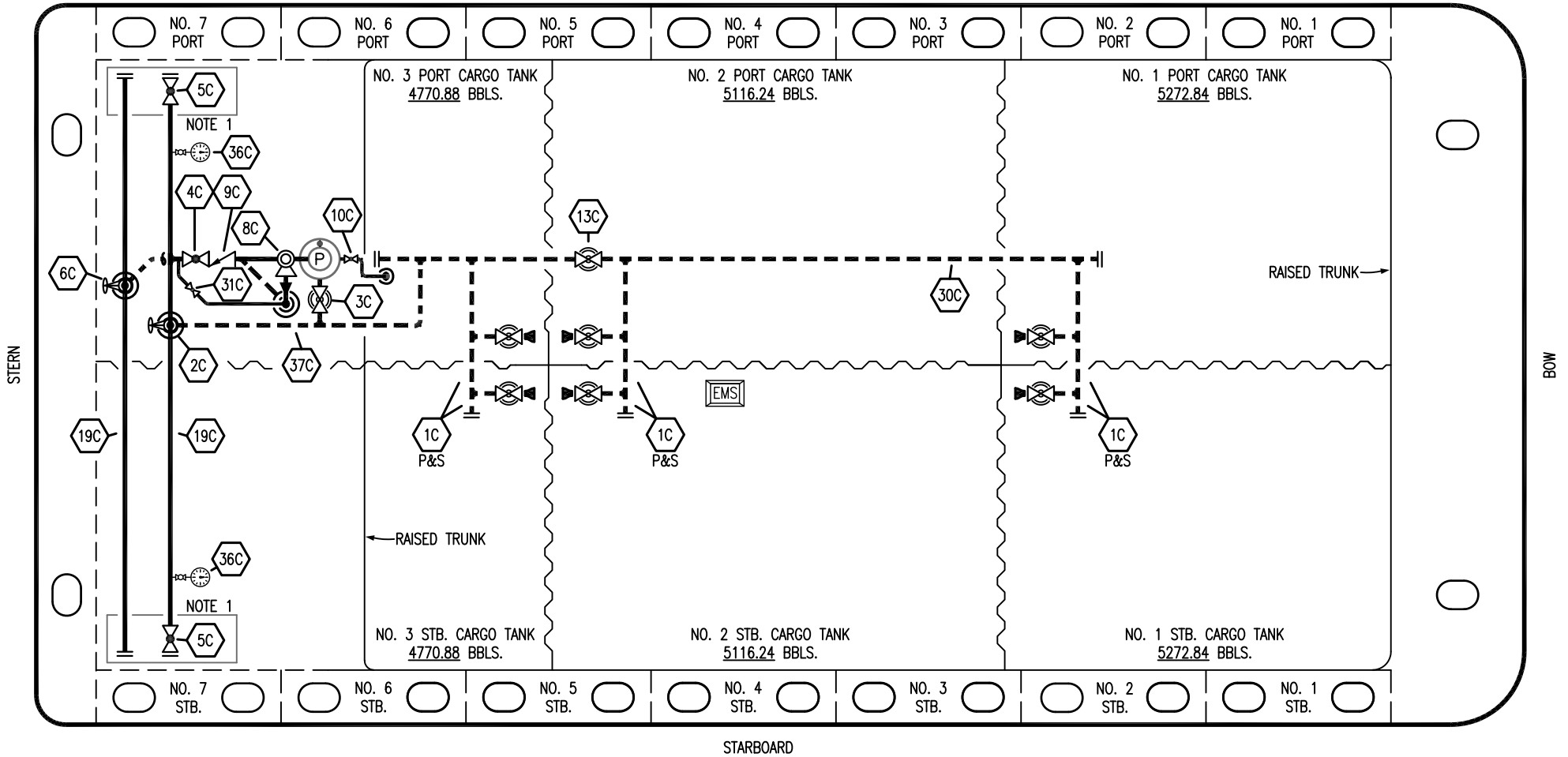


PORT



STARBOARD

- | | | | |
|-----|----------------------|-------|--------------------------|
| NO | DESCRIPTION | NO | DESCRIPTION |
| 1C | CARGO TANK VALVE | 13C | CARGO PIPING BLOCK VALVE |
| 2C | LOAD VALVE | 19C | CARGO HEADER |
| 3C | MASTER SUCTION VALVE | 30C | CARGO PIPELINE |
| 4C | DISCHARGE VALVE | 31C | BYPASS VALVE |
| 5C | HEADER VALVE | 36C | PRESSURE GAUGE |
| 6C | SALVAGE VALVE | 37C | CARGO DROP |
| 8C | RELIEF VALVE | | |
| 9C | CHECK VALVE | — | ABOVE DECK PIPING |
| 10C | BURP VALVE | - - - | BELOW DECK PIPING |

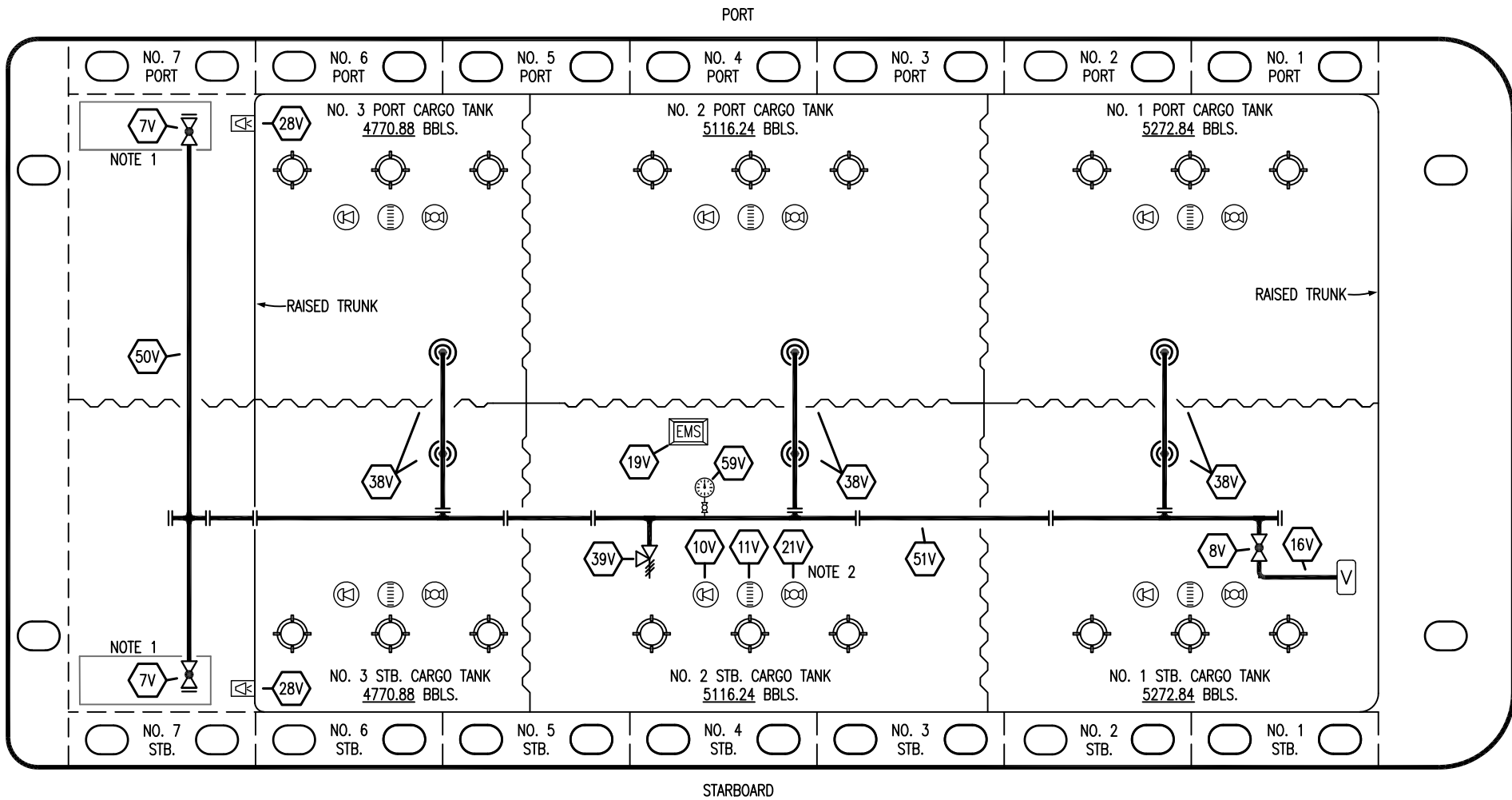
NOTE 1: CONTAINMENT P/S

REV.	DATE	BY	CHK	APP	REVISION DESCRIPTION
1	12/07/23	MRV	DDA	LEP	REVISED PER CLIENT COMMENTS
0	01/08/19	MRV	DDA		ISSUED FOR APPROVAL

KIRBY INLAND MARINE

CARGO
PIPING FLOW DIAGRAM


SCALE: NONE	EBL 2997	REV. 1
PAGE: 1 OF 3		



- | | | | |
|-----|----------------------------|-----|--------------------------|
| NO | DESCRIPTION | NO | DESCRIPTION |
| 7V | 8" HEADER VALVE | 28V | DOCK CONNECTION ALARM |
| 8V | 8" VENT STACK VALVE | 38V | 8" VAPOR PENETRATION (C) |
| 10V | HIGH LEVEL/OVERFILL ALARM | 39V | PRESSURE/VACUUM VALVE |
| 11V | 1-METER GAUGE STICK | 50V | 8" VAPOR HEADER |
| 16V | VAPOR VENT STACK | 51V | 8" VAPOR PIPELINE |
| 19V | EMERGENCY ENGINE SHUT DOWN | 59V | PRESS/VAC GAUGE |
| 21V | 2" HERMETIC GAUGE | — | ABOVE DECK PIPING |

NOTE 2: TYPICAL RIGGING IN EACH TANK
 NOTE 1: CONTAINMENT P/S

REV.	DATE	BY	CHK	APP	REVISION DESCRIPTION
1	12/07/23	MRV	DDA	LEP	REVISED PER CLIENT COMMENTS
0	01/08/19	MRV	DDA		ISSUED FOR APPROVAL



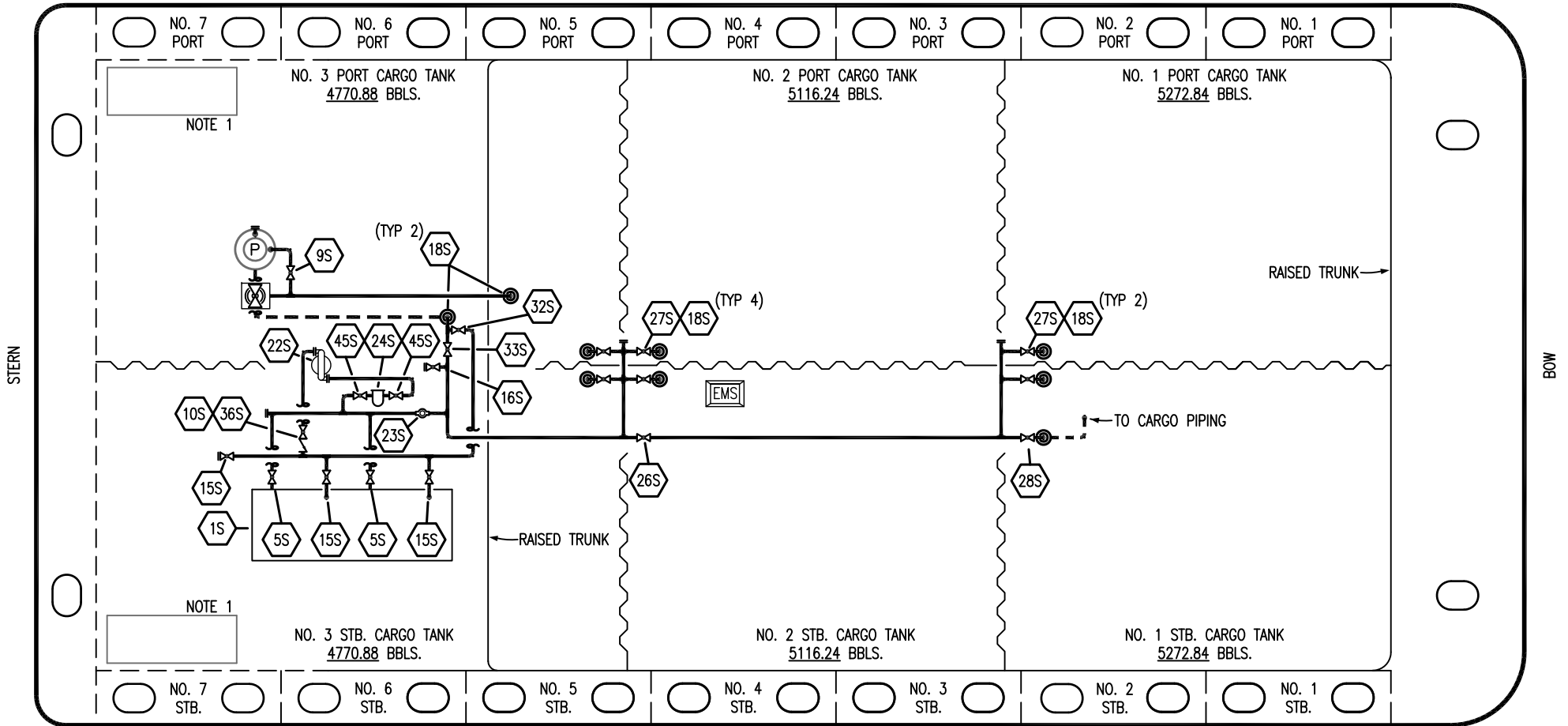
KIRBY INLAND MARINE

VAPOR PIPING FLOW DIAGRAM

EBL 2997

SCALE: NONE	REV. 1
PAGE: 2 OF 3	

PORT



STARBOARD

NO	DESCRIPTION	NO	DESCRIPTION
1S	SLOP TANK	26S	STRIPPING HEADER BLOCK VALVE
5S	SLOP TANK SUCTION VALVE	27S	SUMP SUCTION VALVE
9S	BURP VALVE	28S	CARGO PIPING SUCTION
10S	STRIPPING PUMP CHECK VALVE	32S	PUMP WELL PRIMER VALVE
15S	DISCHARGE VALVE	33S	PUMP WELL SUCTION
16S	REMOTE SUCTION CONNECTION	36S	STRIPPING PUMP DISCHARGE
18S	TYP. STRIPPING PENETRATION (⊙)	45S	STRIPPING PUMP SUCTION
22S	STRIPPING PUMP	—	ABOVE DECK PIPING
23S	FLOW INDICATOR	- - -	BELOW DECK PIPING

NOTE 1: CONTAINMENT P/S

REV.	DATE	BY	CHK	APP	REVISION DESCRIPTION
1	12/07/23	MRV	DDA	LEP	REVISED PER CLIENT COMMENTS
0	01/08/19	MRV	DDA		ISSUED FOR APPROVAL

KIRBY INLAND MARINE 

**STRIPPING
PIPING FLOW DIAGRAM**

SCALE: NONE

EBL 2997

PAGE: 3 OF 3

REV. **1**