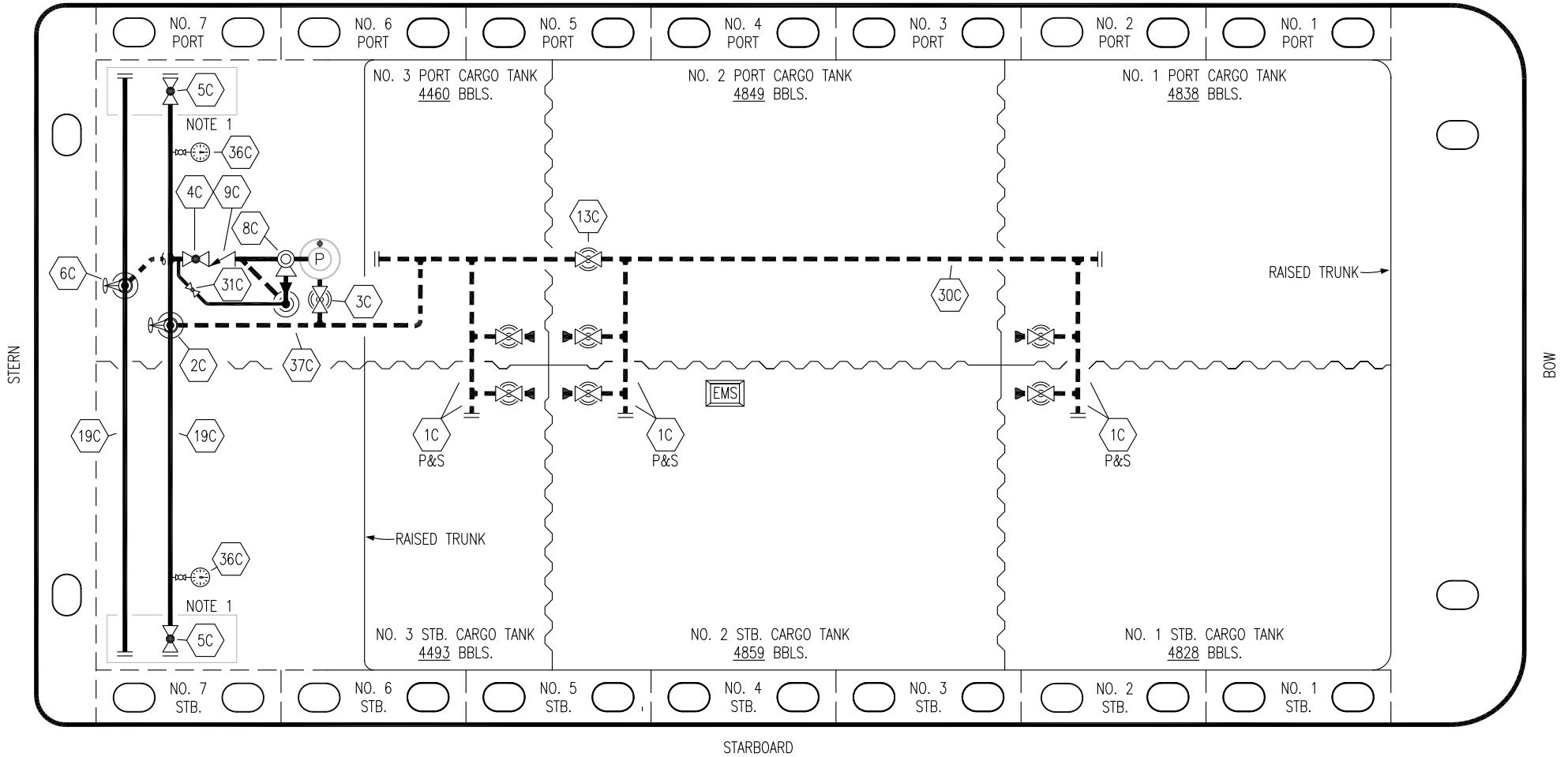


PORT



- | | | | |
|----|----------------------|-----|--------------------------|
| NO | DESCRIPTION | NO | DESCRIPTION |
| 1C | CARGO TANK VALVE | 13C | CARGO PIPING BLOCK VALVE |
| 2C | LOAD VALVE | 19C | CARGO HEADER |
| 3C | MASTER SUCTION VALVE | 30C | CARGO PIPELINE |
| 4C | DISCHARGE VALVE | 31C | BYPASS VALVE |
| 5C | HEADER VALVE | 36C | PRESSURE GAUGE |
| 6C | SALVAGE VALVE | 37C | CARGO DROP |
| 8C | RELIEF VALVE | — | — ABOVE DECK PIPING |
| 9C | CHECK VALVE | --- | --- BELOW DECK PIPING |

NOTE 1: CONTAINMENT P/S

REV.	DATE	BY	CHK	APP	REVISION DESCRIPTION
1	07/10/18	WFB	DDA		REVISED PER CLIENT COMMENTS
0	05/18/18	WFB	DDA		ISSUED FOR APPROVAL

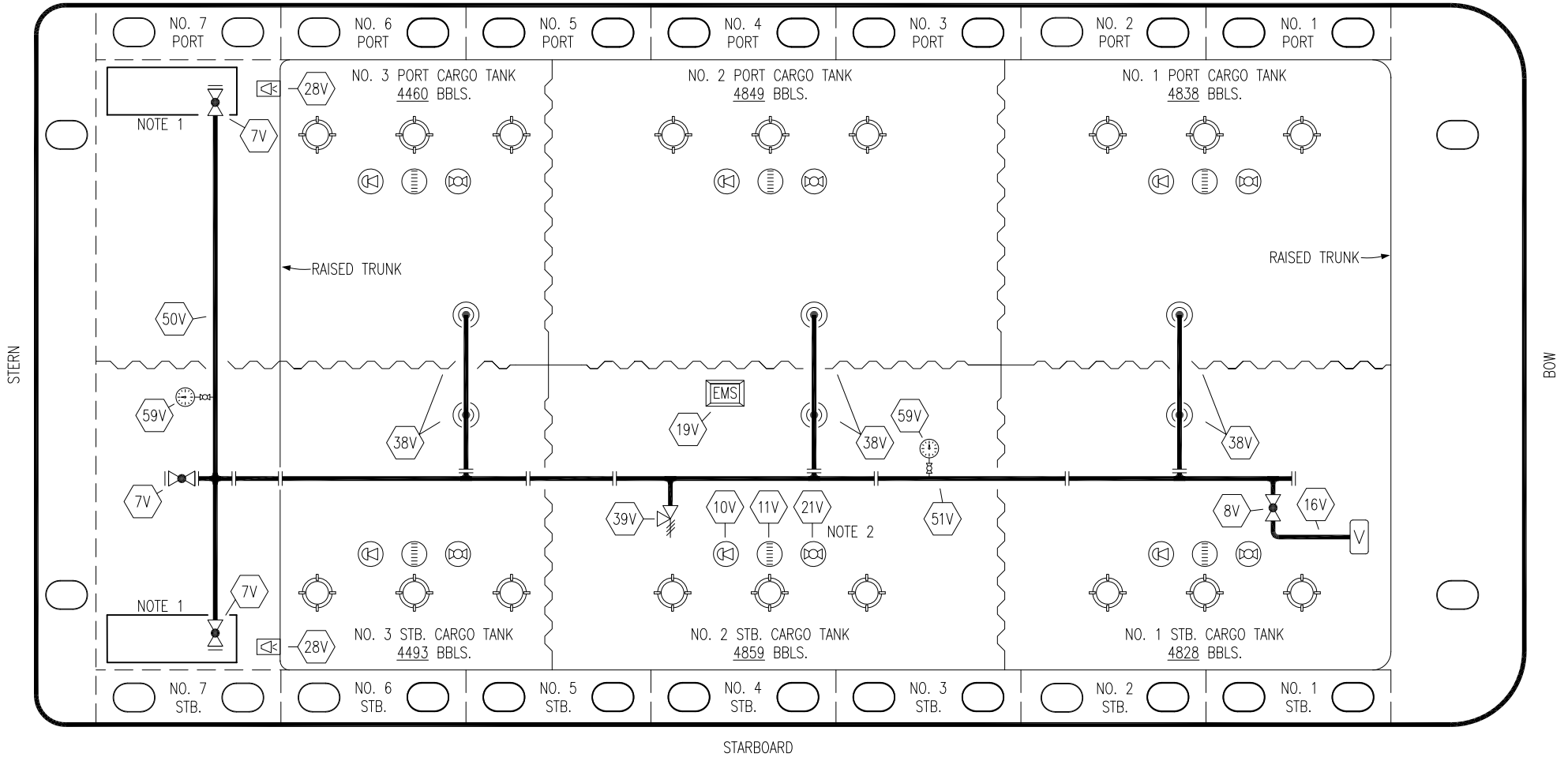
TRINITY

KIRBY INLAND MARINE

**CARGO
PIPING FLOW DIAGRAM**

SCALE: NONE	EBL 2993
PAGE: 1 OF 3	REV. 1

PORT



STERN

BOW

STARBOARD

NO	DESCRIPTION	NO	DESCRIPTION
7V	8" HEADER VALVE	28V	DOCK CONNECTION ALARM
8V	8" VENT STACK VALVE	38V	8" VAPOR PENETRATION (⊙)
10V	HIGH LEVEL/OVERFILL ALARM	39V	PRESSURE/VACUUM VALVE
11V	1-METER GAUGE STICK	50V	8" VAPOR HEADER
16V	VAPOR VENT STACK	51V	8" VAPOR PIPELINE
19V	EMERGENCY ENGINE SHUT DOWN	59V	PRESS/VAC GAUGE
21V	2" HERMETIC GAUGE	—	ABOVE DECK PIPING

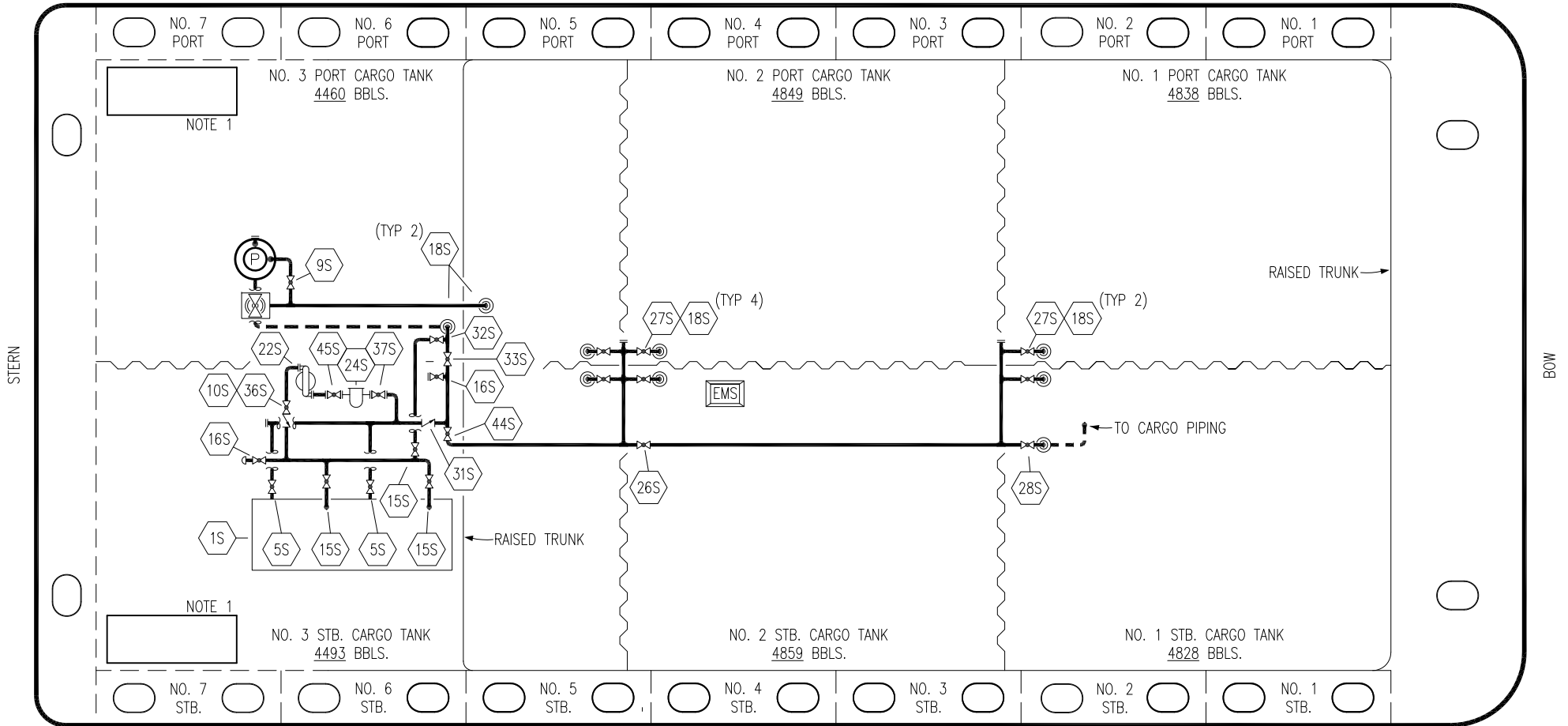
NOTE 2: TYPICAL RIGGING IN EACH TANK
 NOTE 1: CONTAINMENT P/S

TRINITY

					KIRBY INLAND MARINE	
					VAPOR PIPING FLOW DIAGRAM	
					EBL 2993	
1	01/22/20	MRV	DDA		REVISED PER CLIENT COMMENTS	SCALE: NONE
0	05/18/18	WFB	DDA		ISSUED FOR APPROVAL	
REV.	DATE	BY	CHK	APP	REVISION DESCRIPTION	PAGE: 2 OF 3

REV. **1**

PORT



- | | | | |
|-----|------------------------------|-----|------------------------------|
| NO | DESCRIPTION | NO | DESCRIPTION |
| 1S | SLOP TANK | 28S | CARGO PIPING SUCTION |
| 5S | SLOP TANK SUCTION VALVE | 31S | CHECK VALVE |
| 9S | BURP VALVE | 32S | PUMP WELL PRIMER VALVE |
| 10S | STRIPPING PUMP CHECK VALVE | 33S | PUMP WELL SUCTION |
| 15S | DISCHARGE VALVE | 36S | STRIPPING PUMP DISCHARGE |
| 16S | REMOTE SUCTION CONNECTION | 37S | BLOCK VALVE |
| 18S | TYP. STRIPPING PENETRATION | 44S | STRIPPING PUMP SUCTION |
| 22S | STRIPPING PUMP | 45S | STRIPPING PUMP SUCTION VALVE |
| 24S | BASKET STRAINER | — | — ABOVE DECK PIPING |
| 26S | STRIPPING HEADER BLOCK VALVE | --- | --- BELOW DECK PIPING |
| 27S | SUMP SUCTION VALVE | | |

STARBOARD

NOTE 1: CONTAINMENT P/S

REV.	DATE	BY	CHK	APP	REVISION DESCRIPTION
1	01/22/20	MRV	DDA		REVISED PER CLIENT COMMENTS
0	05/18/18	WFB	DDA		ISSUED FOR APPROVAL

TRINITY

KIRBY INLAND MARINE

**STRIPPING
PIPING FLOW DIAGRAM**

SCALE: NONE	EBL 2993
PAGE: 3 OF 3	REV. 1