

- | | | | |
|----|----------------------|-------|--------------------------|
| NO | DESCRIPTION | NO | DESCRIPTION |
| 1C | CARGO TANK VALVE | 13C | CARGO PIPING BLOCK VALVE |
| 2C | LOAD VALVE | 19C | CARGO HEADER |
| 3C | MASTER SUCTION VALVE | 30C | CARGO PIPELINE |
| 4C | DISCHARGE VALVE | 31C | BYPASS VALVE |
| 5C | HEADER VALVE | 36C | PRESSURE GAUGE |
| 8C | RELIEF VALVE | 37C | CARGO DROP |
| 9C | CHECK VALVE | | |
| | | — | ABOVE DECK PIPING |
| | | - - - | BELOW DECK PIPING |

NOTE 1: CONTAINMENT P/S

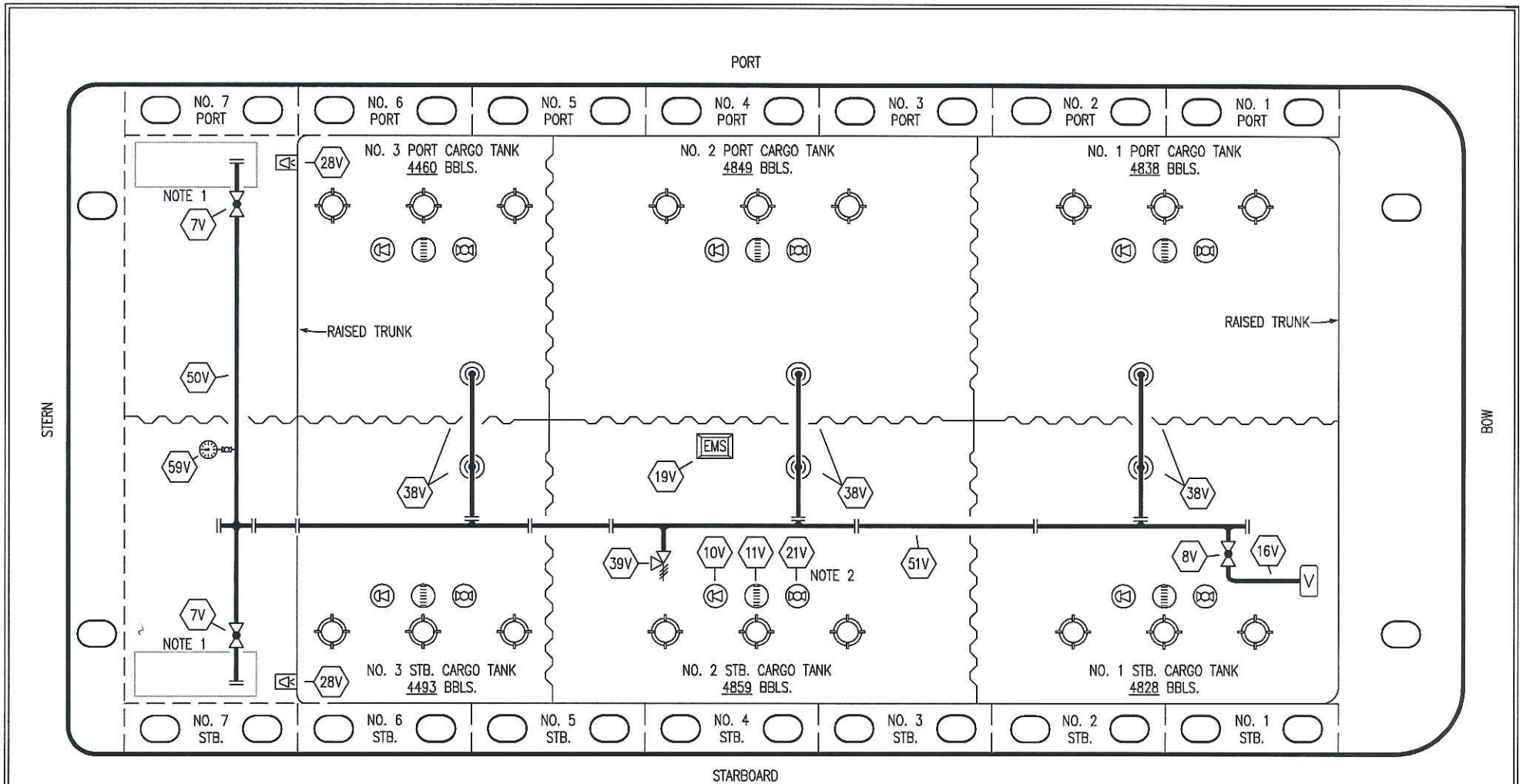
| | | | | |
|------|----------|-----|-----|----------------------|
| 0 | 05/11/18 | WFB | DDA | ISSUED FOR APPROVAL |
| REV. | DATE | BY | CHK | APP |
| | | | | REVISION DESCRIPTION |

TRINITY

KIRBY INLAND MARINE

**CARGO
PIPING FLOW DIAGRAM**


| | |
|--------------|-----------------|
| SCALE: NONE | EBL 2985 |
| PAGE: 1 OF 3 | REV. 0 |

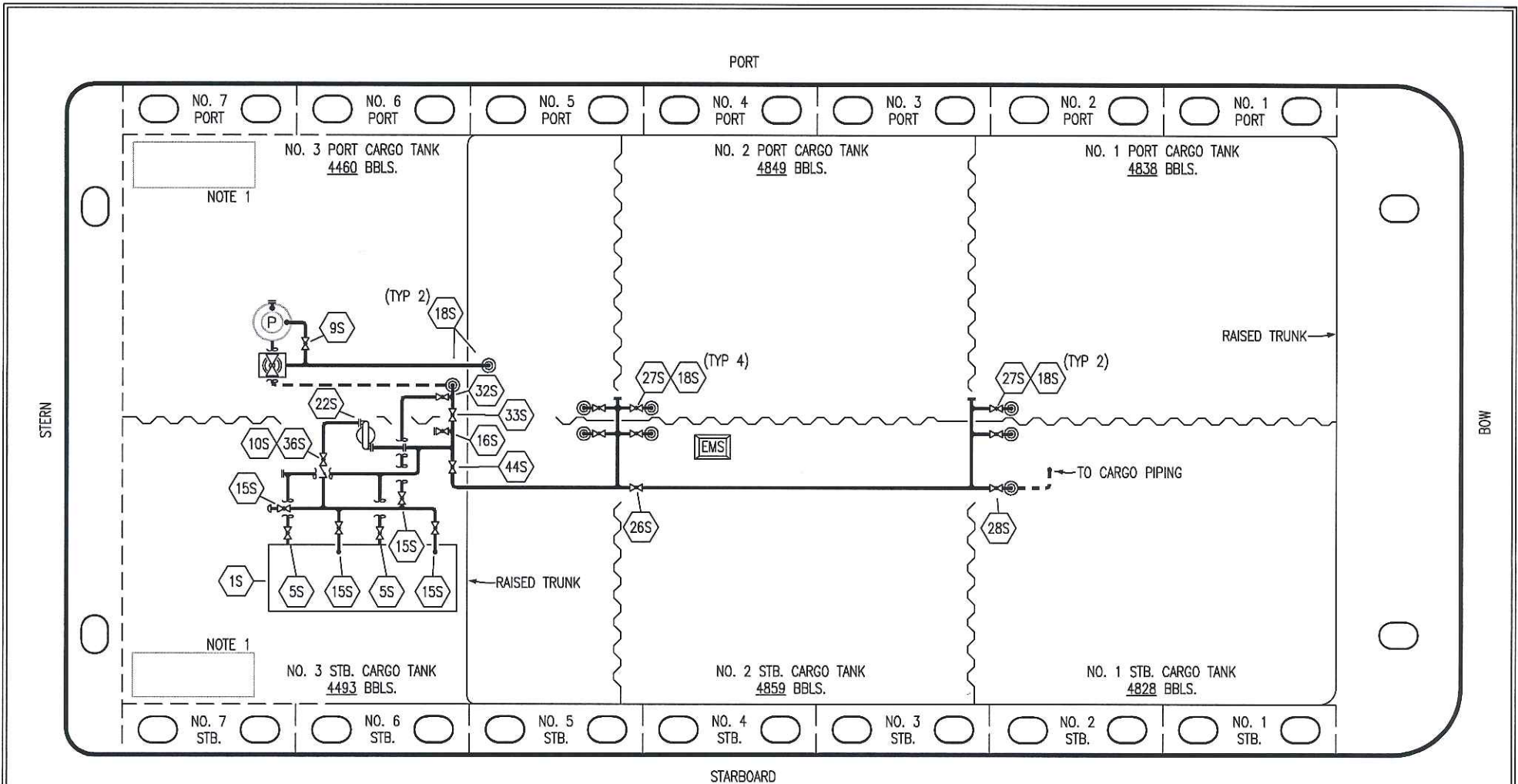


| NO | DESCRIPTION | NO | DESCRIPTION |
|-----|----------------------------|---------------------|--------------------------|
| 7V | 8" HEADER VALVE | 28V | DOCK CONNECTION ALARM |
| 8V | 8" VENT STACK VALVE | 38V | 8" VAPOR PENETRATION (⊙) |
| 10V | HIGH LEVEL/OVERFILL ALARM | 39V | PRESSURE/VACUUM VALVE |
| 11V | 1-METER GAUGE STICK | 50V | 8" VAPOR HEADER |
| 16V | VAPOR VENT STACK | 51V | 8" VAPOR PIPELINE |
| 19V | EMERGENCY ENGINE SHUT DOWN | 59V | PRESS/VAC GAUGE |
| 21V | 2" HERMETIC GAUGE | — ABOVE DECK PIPING | |

NOTE 2: TYPICAL RIGGING IN EACH TANK

NOTE 1: CONTAINMENT P/S

| | | | | | | |
|------|----------|-----|-----|---------------------|---|--------------|
| | | | | | TRINITY | |
| | | | | | KIRBY INLAND MARINE  | |
| | | | | | VAPOR PIPING FLOW DIAGRAM | |
| | | | | | SCALE: NONE | |
| | | | | | EBL 2985 | |
| 0 | 05/11/18 | WFB | DDA | ISSUED FOR APPROVAL | | REV. 0 |
| REV. | DATE | BY | CHK | APP | REVISION DESCRIPTION | PAGE: 2 OF 3 |



- | | | | |
|-----|--------------------------------|-------|------------------------------|
| NO | DESCRIPTION | NO | DESCRIPTION |
| 1S | SLOP TANK | 26S | STRIPPING HEADER BLOCK VALVE |
| 5S | SLOP TANK SUCTION VALVE | 27S | SUMP SUCTION VALVE |
| 9S | BURP VALVE | 28S | CARGO PIPING SUCTION |
| 10S | STRIPPING PUMP CHECK VALVE | 32S | PUMP WELL PRIMER VALVE |
| 15S | DISCHARGE VALVE | 33S | PUMP WELL SUCTION |
| 16S | REMOTE SUCTION CONNECTION | 36S | STRIPPING PUMP DISCHARGE |
| 18S | TYP. STRIPPING PENETRATION (⊙) | 44S | STRIPPING PUMP SUCTION |
| 22S | STRIPPING PUMP | — | — ABOVE DECK PIPING |
| | | - - - | BELOW DECK PIPING |

NOTE 1: CONTAINMENT P/S

| | | | | |
|------|----------|-----|-----|----------------------|
| 0 | 05/11/18 | WFB | DDA | ISSUED FOR APPROVAL |
| REV. | DATE | BY | CHK | APP |
| | | | | REVISION DESCRIPTION |

TRINITY

KIRBY INLAND MARINE

**STRIPPING
PIPING FLOW DIAGRAM**

| | |
|--------------|-----------------|
| SCALE: NONE | EBL 2985 |
| PAGE: 3 OF 3 | REV. 0 |