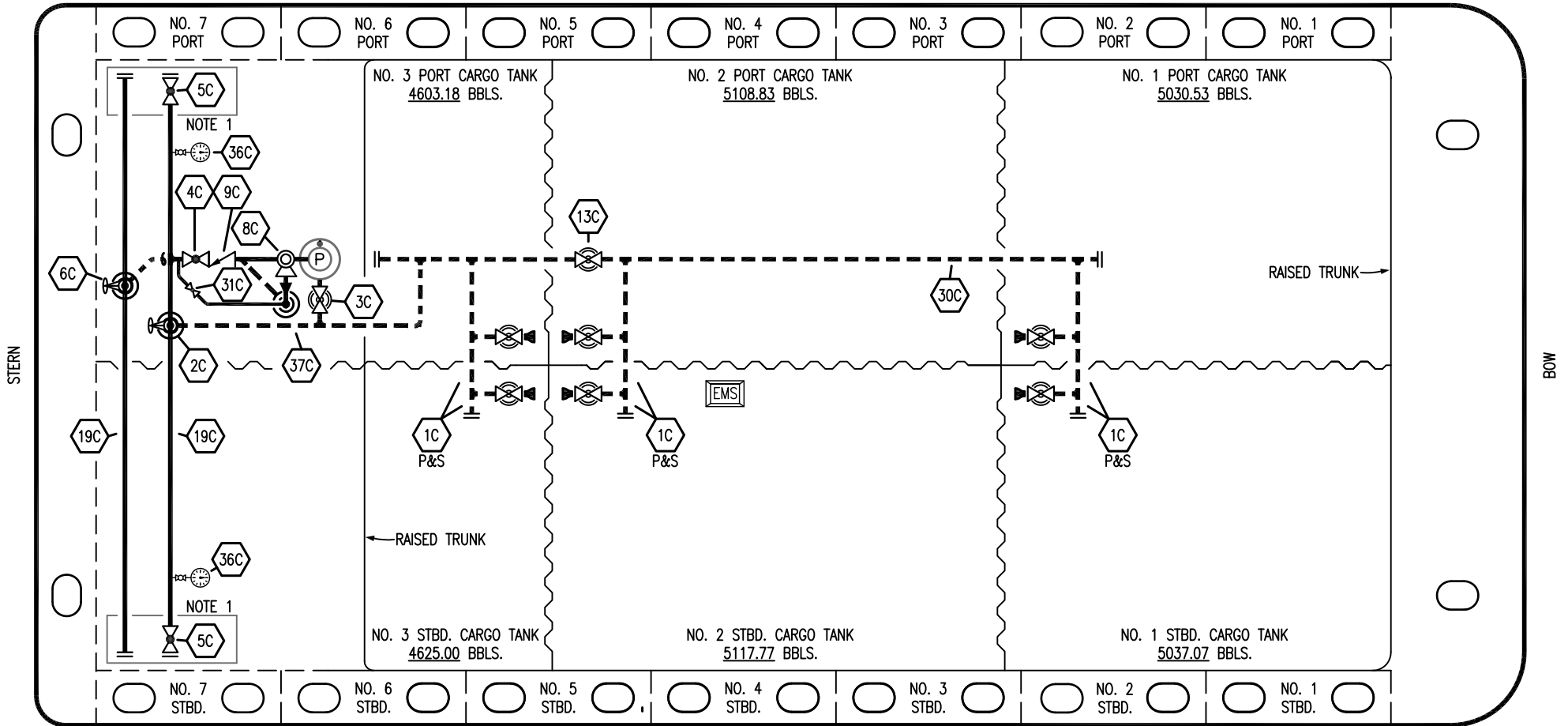


PORT



STARBOARD

- |    |                      |       |                          |
|----|----------------------|-------|--------------------------|
| NO | DESCRIPTION          | NO    | DESCRIPTION              |
| 1C | CARGO TANK VALVE     | 13C   | CARGO PIPING BLOCK VALVE |
| 2C | LOAD VALVE           | 19C   | CARGO HEADER             |
| 3C | MASTER SUCTION VALVE | 30C   | CARGO PIPELINE           |
| 4C | DISCHARGE VALVE      | 31C   | BYPASS VALVE             |
| 5C | HEADER VALVE         | 36C   | PRESSURE GAUGE           |
| 6C | SALVAGE VALVE        | 37C   | CARGO DROP               |
| 8C | RELIEF VALVE         | —     | — ABOVE DECK PIPING      |
| 9C | CHECK VALVE          | - - - | - - - BELOW DECK PIPING  |

NOTE 1: CONTAINMENT P/S

REV.	DATE	BY	CHK	APP	REVISION DESCRIPTION
2	07/05/23	MRV	DDA	JF	REVISED PER CLIENT COMMENTS
1	07/10/18	WFB	DDA		REVISED PER CLIENT COMMENTS
0	05/17/18	WFB	DDA		ISSUED FOR APPROVAL

TRINITY

**KIRBY INLAND MARINE**

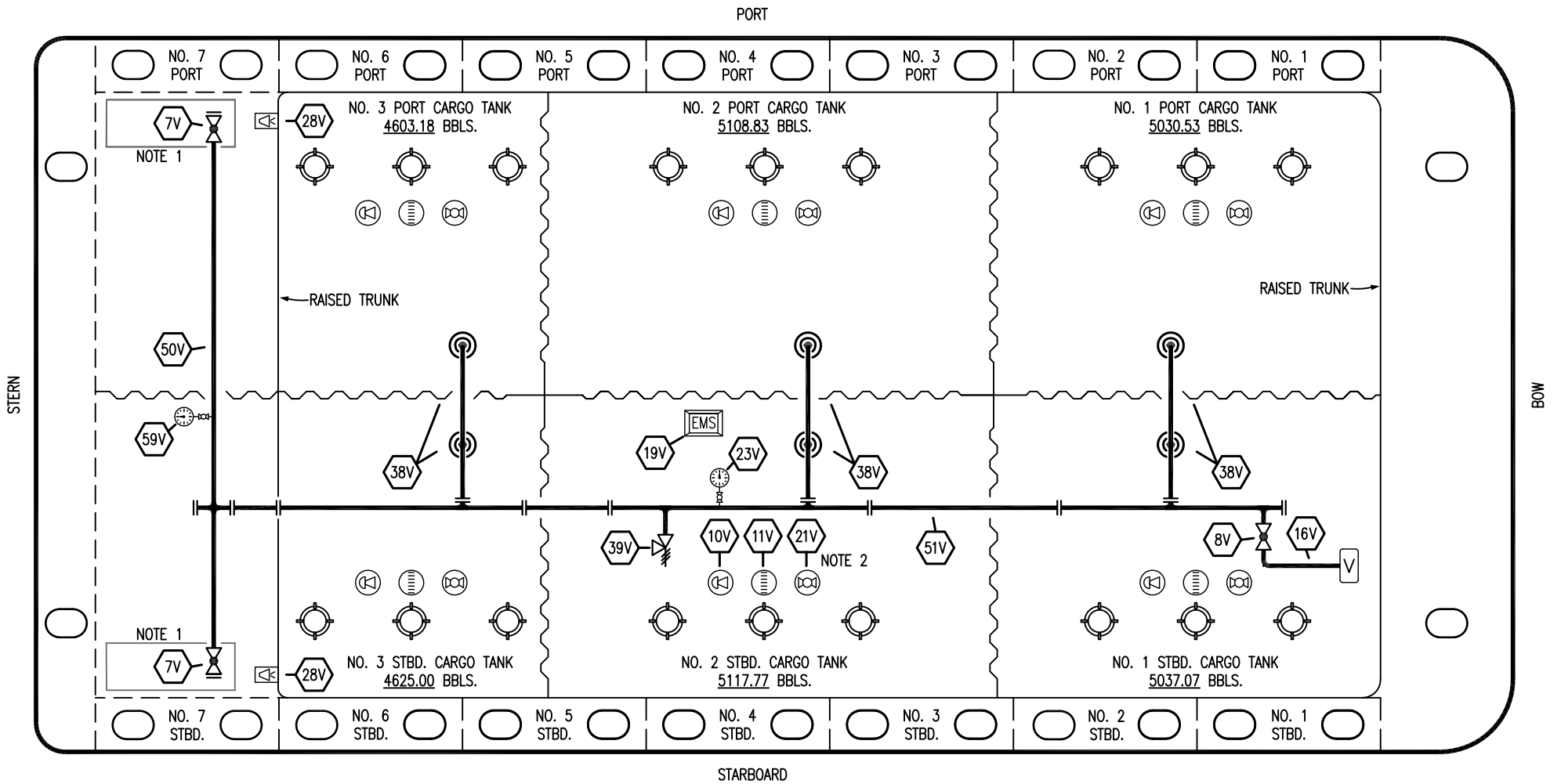
**CARGO**

**PIPING FLOW DIAGRAM**

**EBL 2984**

SCALE: NONE  
PAGE: 1 OF 3

REV. **2**



NO	DESCRIPTION	NO	DESCRIPTION
7V	HEADER VALVE	28V	DOCK CONNECTION ALARM
8V	VENT STACK VALVE	38V	VAPOR PENETRATION
10V	HIGH LEVEL/OVERFILL ALARM	39V	PRESSURE/VACUUM VALVE
11V	1-METER GAUGE STICK	50V	VAPOR HEADER
16V	VAPOR VENT STACK	51V	VAPOR PIPELINE
19V	EMERGENCY ENGINE SHUT DOWN	59V	PRESS/VAC GAUGE
21V	2" HERMETIC GAUGE	—	ABOVE DECK PIPING
23V	PRESSURE GAUGE		

NOTE 2: TYPICAL RIGGING IN EACH TANK  
 NOTE 1: CONTAINMENT P/S

REV.	DATE	BY	CHK	APP	REVISION DESCRIPTION
2	07/05/23	MRV	DDA	JF	REVISED PER CLIENT COMMENTS
1	07/05/18	WFB	DDA		REVISED PER CLIENT COMMENTS
0	05/17/18	WFB	DDA		ISSUED FOR APPROVAL

TRINITY

**KIRBY INLAND MARINE**

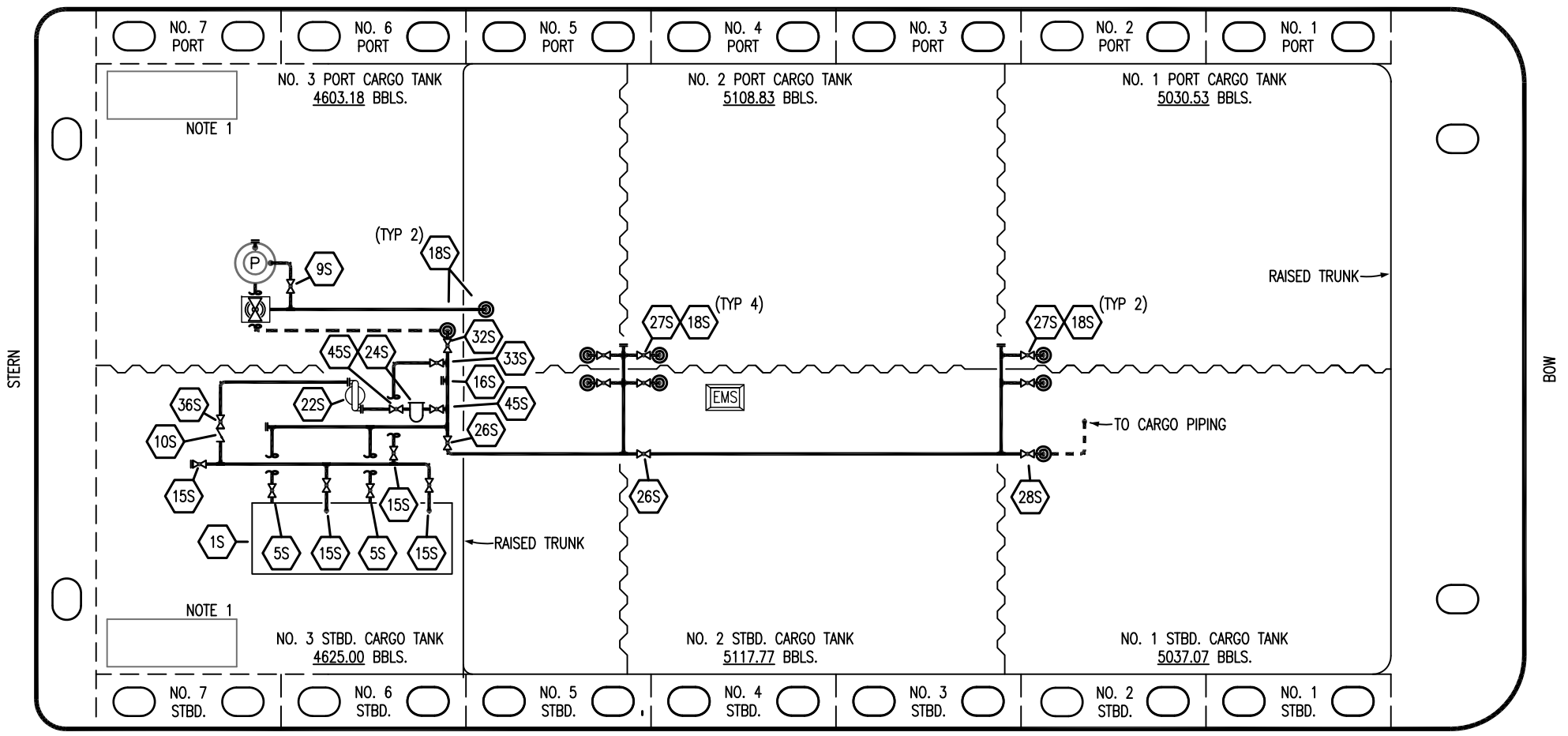
**VAPOR  
PIPING FLOW DIAGRAM**

**EBL 2984**

SCALE: NONE  
PAGE: 2 OF 3

REV. **2**

PORT



NOTE 1

NOTE 1

NO	DESCRIPTION	NO	DESCRIPTION
1S	SLOP TANK	26S	STRIPPING HEADER BLOCK VALVE
4S	CARGO TANK SUCTION VALVE	27S	SUMP SUCTION VALVE
5S	SLOP TANK SUCTION VALVE	28S	CARGO PIPING SUCTION
9S	BURP VALVE	32S	PUMP WELL PRIMER VALVE
10S	STRIPPING PUMP CHECK VALVE	33S	PUMP WELL SUCTION
15S	DISCHARGE VALVE	36S	STRIPPING PUMP DISCHARGE
16S	REMOTE SUCTION CONNECTION	45S	STRIPPING PUMP SUCTION VALVE
18S	STRIPPING PENETRATION	—	ABOVE DECK PIPING
22S	STRIPPING PUMP	- - -	BELOW DECK PIPING
24S	BASKET STRAINER		

NOTE 1: CONTAINMENT P/S

REV.	DATE	BY	CHK	APP	REVISION DESCRIPTION
2	07/05/23	MRV	DDA	JF	REVISED PER CLIENT COMMENTS
1	07/05/18	WFB	DDA		REVISED PER CLIENT COMMENTS
0	05/17/18	WFB	DDA		ISSUED FOR APPROVAL

TRINITY

**KIRBY INLAND MARINE**

**STRIPPING  
PIPING FLOW DIAGRAM**

SCALE: NONE	<b>EBL 2984</b>	REV. 2
PAGE: 3 OF 3		