

NO	DESCRIPTION	NO	DESCRIPTION
7V	8" HEADER VALVE	28V	DOCK CONNECTION ALARM
8V	8" VENT STACK VALVE	38V	8" VAPOR PENETRATION (⊙)
10V	HIGH LEVEL/OVERFILL ALARM	39V	PRESSURE/VACUUM VALVE
11V	1-METER GAUGE STICK	50V	8" VAPOR HEADER
16V	VAPOR VENT STACK	51V	8" VAPOR PIPELINE
19V	EMERGENCY ENGINE SHUT DOWN	59V	PRESS/VAC GAUGE
21V	2" HERMETIC GAUGE	—	ABOVE DECK PIPING

NOTE 2: TYPICAL RIGGING IN EACH TANK  
 NOTE 1: CONTAINMENT P/S

0	10/16/18	MRV	DDA	ISSUED FOR APPROVAL	
REV.	DATE	BY	CHK	APP	REVISION DESCRIPTION

TRINITY

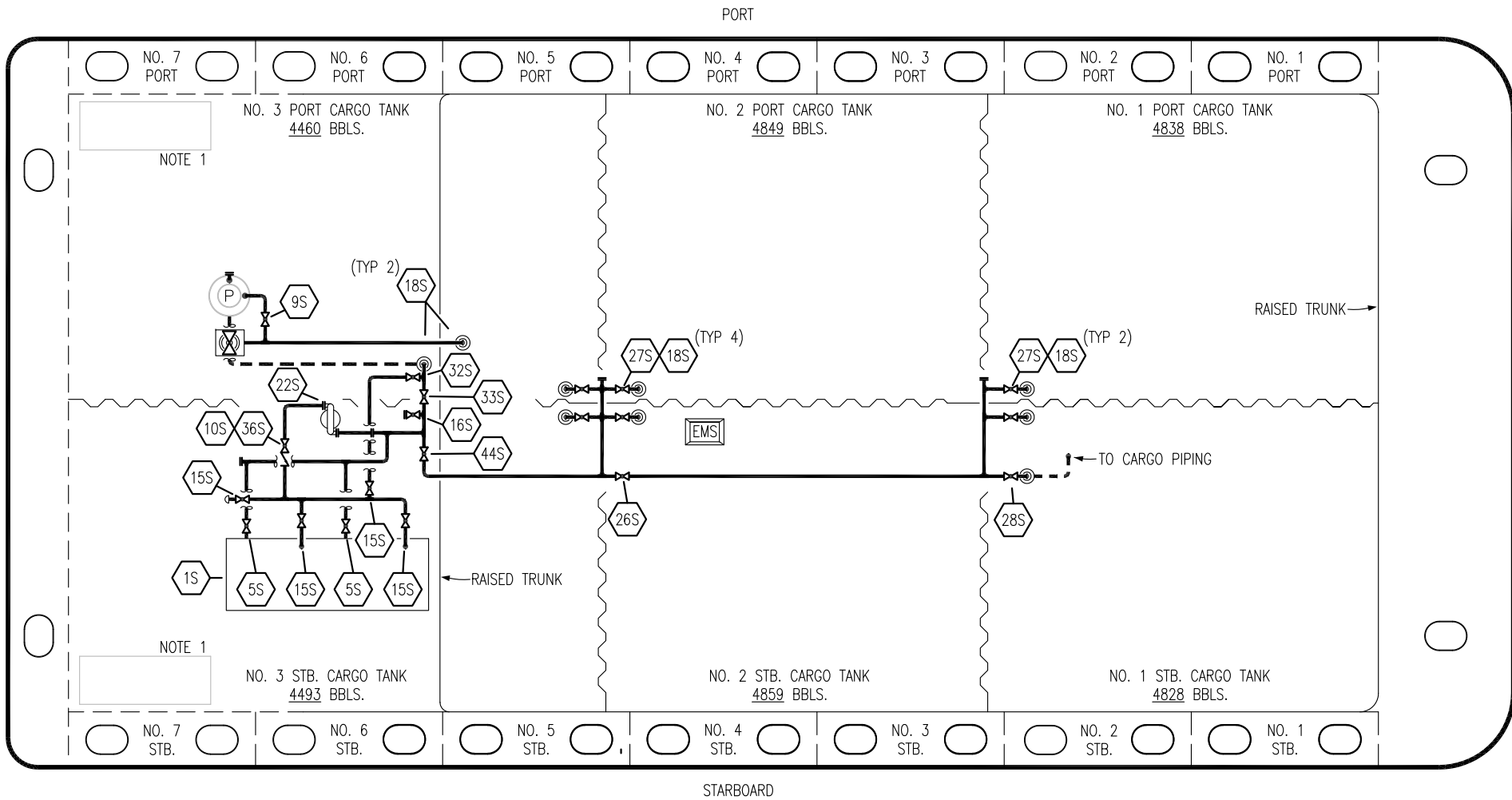
**KIRBY INLAND MARINE**

**VAPOR  
PIPING FLOW DIAGRAM**

**EBL 2982**

SCALE: NONE  
PAGE: 2 OF 3

REV. **0**



- |     |                                |       |                              |
|-----|--------------------------------|-------|------------------------------|
| NO  | DESCRIPTION                    | NO    | DESCRIPTION                  |
| 1S  | SLOP TANK                      | 26S   | STRIPPING HEADER BLOCK VALVE |
| 5S  | SLOP TANK SUCTION VALVE        | 27S   | SUMP SUCTION VALVE           |
| 9S  | BURP VALVE                     | 28S   | CARGO PIPING SUCTION         |
| 10S | STRIPPING PUMP CHECK VALVE     | 32S   | PUMP WELL PRIMER VALVE       |
| 15S | DISCHARGE VALVE                | 33S   | PUMP WELL SUCTION            |
| 16S | REMOTE SUCTION CONNECTION      | 36S   | STRIPPING PUMP DISCHARGE     |
| 18S | TYP. STRIPPING PENETRATION (⊙) | 44S   | STRIPPING PUMP SUCTION       |
| 22S | STRIPPING PUMP                 | —     | ABOVE DECK PIPING            |
|     |                                | - - - | BELOW DECK PIPING            |

NOTE 1: CONTAINMENT P/S

0	10/12/18	HSC	DDA	ISSUED FOR APPROVAL
REV.	DATE	BY	CHK	APP
				REVISION DESCRIPTION

TRINITY

**KIRBY INLAND MARINE**

**STRIPPING  
PIPING FLOW DIAGRAM**

SCALE: NONE	<b>EBL 2982</b>	REV. 0
PAGE: 3 OF 3		