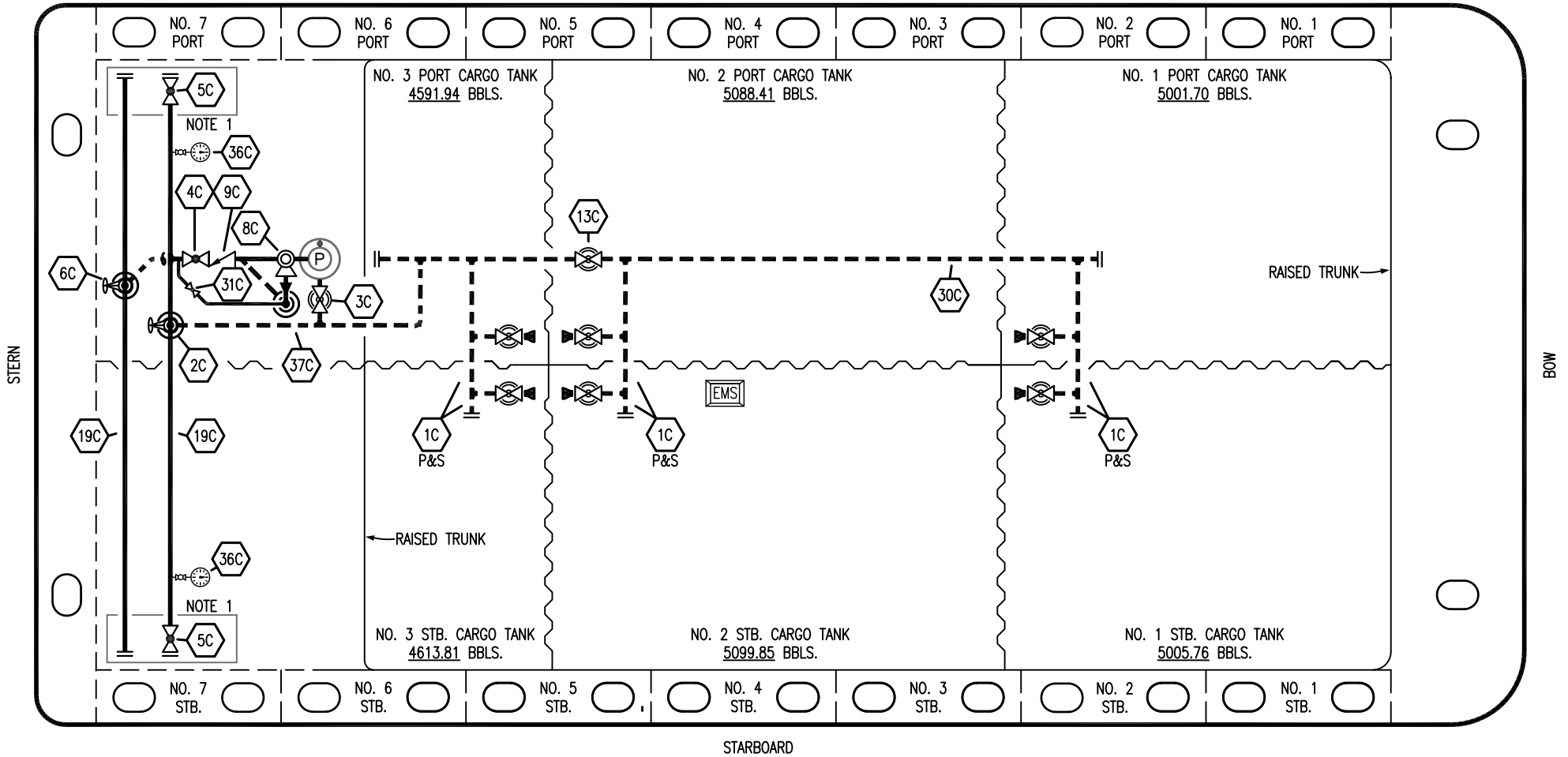


PORT



STARBOARD

- |    |                      |       |                          |
|----|----------------------|-------|--------------------------|
| NO | DESCRIPTION          | NO    | DESCRIPTION              |
| 1C | CARGO TANK VALVE     | 13C   | CARGO PIPING BLOCK VALVE |
| 2C | LOAD VALVE           | 19C   | CARGO HEADER             |
| 3C | MASTER SUCTION VALVE | 30C   | CARGO PIPELINE           |
| 4C | DISCHARGE VALVE      | 31C   | BYPASS VALVE             |
| 5C | HEADER VALVE         | 36C   | PRESSURE GAUGE           |
| 6C | SALVAGE VALVE        | 37C   | CARGO DROP               |
| 8C | RELIEF VALVE         | —     | ABOVE DECK PIPING        |
| 9C | CHECK VALVE          | - - - | BELOW DECK PIPING        |

NOTE 1: CONTAINMENT P/S

REV.	DATE	BY	CHK	APP	REVISION DESCRIPTION
1	01/30/24	MRV	DDA	FIX	REVISED PER CLIENT COMMENTS
0	10/16/18	MRV	DDA		ISSUED FOR APPROVAL

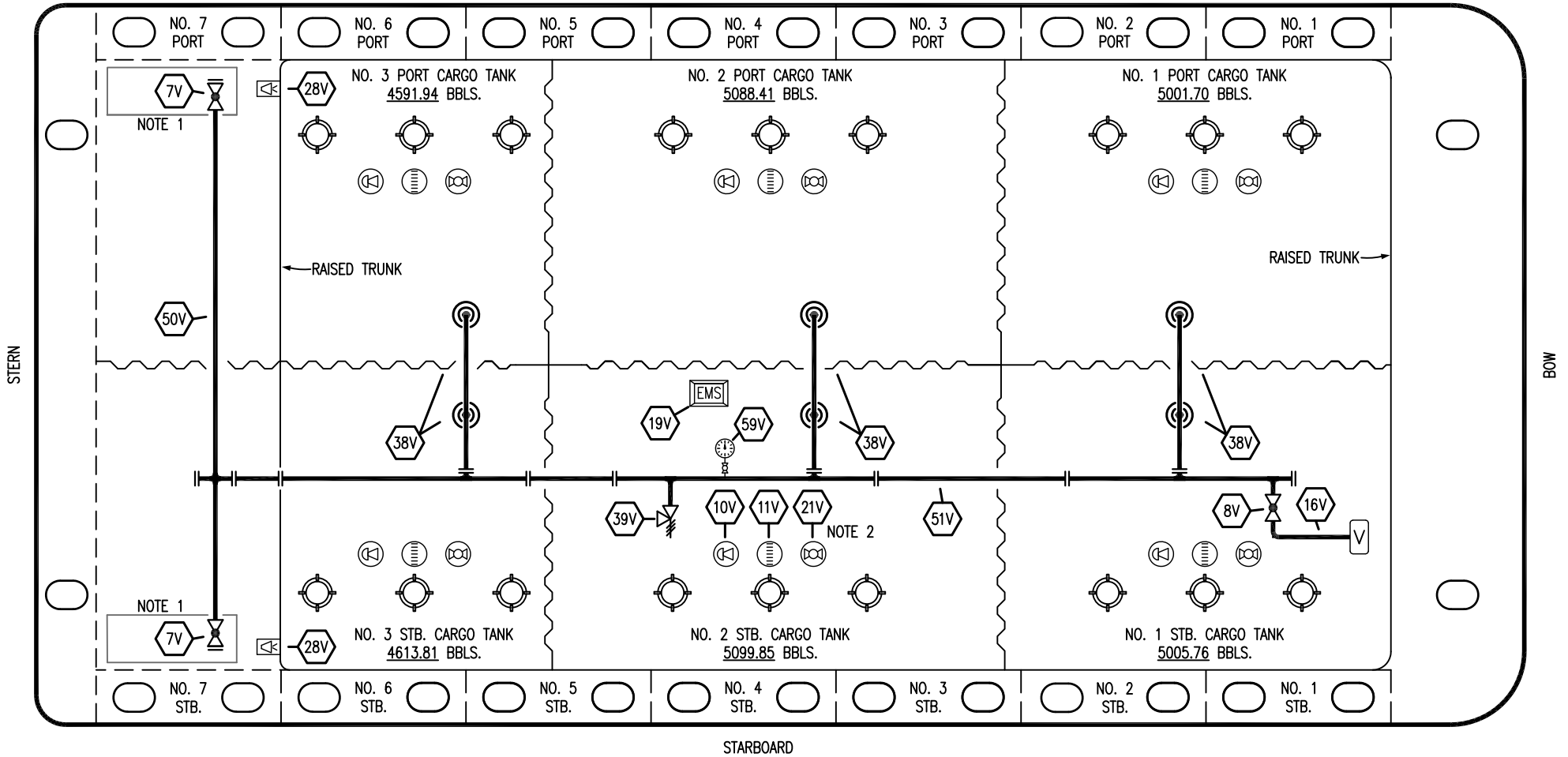
TRINITY

**KIRBY INLAND MARINE**

**CARGO  
PIPING FLOW DIAGRAM**

SCALE: NONE	<b>EBL 2981</b>	REV. 1
PAGE: 1 OF 3		

PORT



STARBOARD

NO	DESCRIPTION	NO	DESCRIPTION
7V	8" HEADER VALVE	28V	DOCK CONNECTION ALARM
8V	8" VENT STACK VALVE	38V	8" VAPOR PENETRATION
10V	HIGH LEVEL/OVERFILL ALARM	39V	PRESSURE/VACUUM VALVE
11V	1-METER GAUGE STICK	50V	8" VAPOR HEADER
16V	VAPOR VENT STACK	51V	8" VAPOR PIPELINE
19V	EMERGENCY ENGINE SHUT DOWN	59V	PRESS/VAC GAUGE
21V	2" HERMETIC GAUGE	—	ABOVE DECK PIPING

NOTE 2: TYPICAL RIGGING IN EACH TANK

NOTE 1: CONTAINMENT P/S

TRINITY

**KIRBY INLAND MARINE** 

**VAPOR  
PIPING FLOW DIAGRAM**

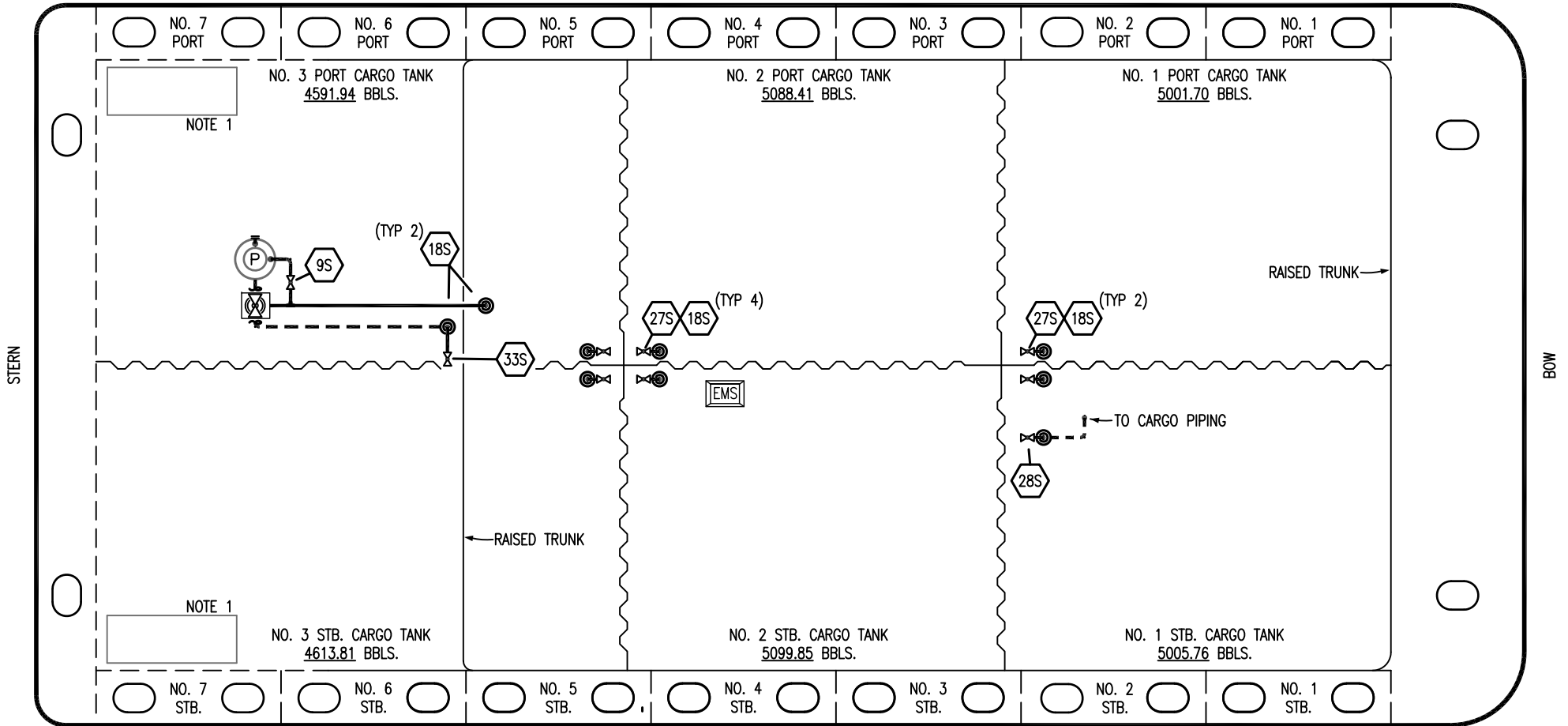
REV.	DATE	BY	CHK	APP	REVISION DESCRIPTION
1	01/30/24	MRV	DDA	FIX	REVISED PER CLIENT COMMENTS
0	10/16/18	MRV	DDA		ISSUED FOR APPROVAL

SCALE: NONE  
PAGE: 2 OF 3

**EBL 2981**

REV. **1**

PORT



NO. 7 PORT

NO. 6 PORT

NO. 5 PORT

NO. 4 PORT

NO. 3 PORT

NO. 2 PORT

NO. 1 PORT

NO. 3 PORT CARGO TANK  
4591.94 BBLs.

NO. 2 PORT CARGO TANK  
5088.41 BBLs.

NO. 1 PORT CARGO TANK  
5001.70 BBLs.

NOTE 1

(TYP 2)

(TYP 4)

(TYP 2)

RAISED TRUNK →

← RAISED TRUNK

← TO CARGO PIPING

NOTE 1

NO. 3 STB. CARGO TANK  
4613.81 BBLs.

NO. 2 STB. CARGO TANK  
5099.85 BBLs.

NO. 1 STB. CARGO TANK  
5005.76 BBLs.

NO. 7 STB.

NO. 6 STB.

NO. 5 STB.

NO. 4 STB.

NO. 3 STB.

NO. 2 STB.

NO. 1 STB.

STARBOARD

- | NO    | DESCRIPTION                    |
|-------|--------------------------------|
| 9S    | BURP VALVE                     |
| 18S   | TYP. STRIPPING PENETRATION (⊙) |
| 27S   | SUMP SUCTION VALVE             |
| 28S   | CARGO PIPING SUCTION           |
| 33S   | PUMP WELL SUCTION              |
| —     | ABOVE DECK PIPING              |
| - - - | BELOW DECK PIPING              |

NOTE 1: CONTAINMENT P/S

REV.	DATE	BY	CHK	APP	REVISION DESCRIPTION
1	01/30/24	MRV	DDA	FIX	REVISED PER CLIENT COMMENTS
0	10/12/18	HSC	DDA		ISSUED FOR APPROVAL

TRINITY

**KIRBY INLAND MARINE**

**STRIPPING  
PIPING FLOW DIAGRAM**

SCALE: NONE	<b>EBL 2981</b>
PAGE: 3 OF 3	REV. <b>1</b>