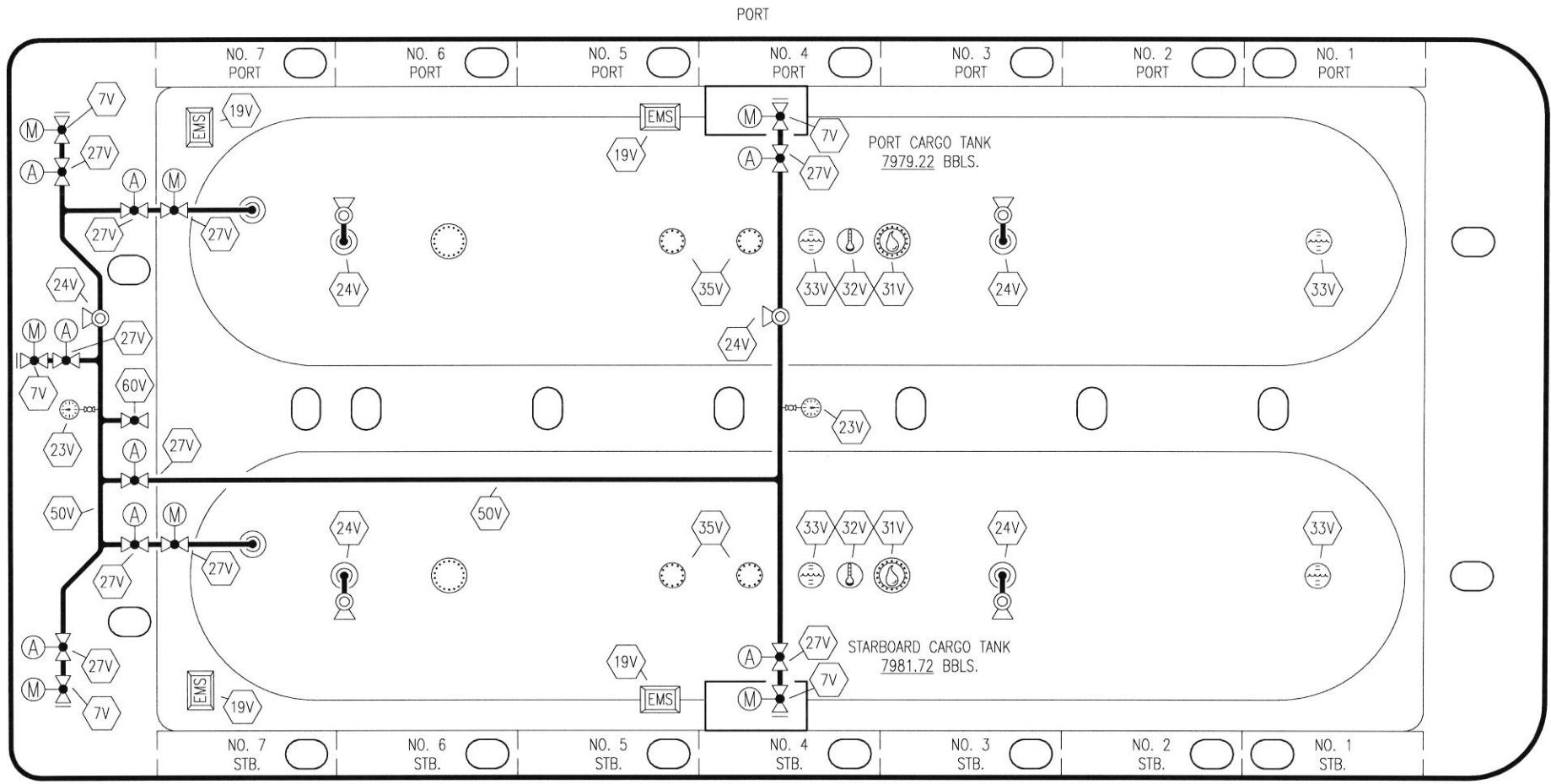


NO	DESCRIPTION	NO	DESCRIPTION
1C	CARGO TANK VALVE	35C	CROSSOVER VALVE
5C	HEADER VALVE	36C	PRESSURE GAUGE
7C	STRIPPING BLOCK VALVE	37C	CARGO DROP
8C	RELIEF VALVE	—	—
13C	CARGO PIPING BLOCK VALVE	—	—
19C	CARGO HEADER	(A)	AUTOMATIC
30C	CARGO PIPELINE	(M)	MANUAL
34V	LIQUID SPRAY BAR		

0	12/17/20	DLW	DDA	CW	ISSUED FOR APPROVAL
REV.	DATE	BY	CHK	APP	REVISION DESCRIPTION

<b>KIRBY INLAND MARINE</b>	
<b>CARGO PIPING FLOW DIAGRAM</b>	
SCALE: NONE PAGE: 1 OF 2	<b>DBL 710</b>
	REV. <b>0</b>



- |     |                            |     |                   |
|-----|----------------------------|-----|-------------------|
| NO  | DESCRIPTION                | NO  | DESCRIPTION       |
| 5V  | BLOCK VALVE                | 35V | SPARE (NOZZLE)    |
| 7C  | STRIPPING BLOCK VALVE      | 38V | VAPOR DROP        |
| 7V  | HEADER VALVE               | 50V | VAPOR HEADER      |
| 19V | EMERGENCY ENGINE SHUT DOWN | 60V | CROSSOVER VALVE   |
| 23V | PRESSURE GAUGE             | —   | ABOVE DECK PIPING |
| 24V | PRESSURE RELIEF VALVE      | (A) | AUTOMATIC         |
| 27V | VALVE                      | (M) | MANUAL            |
| 31V | SAMPLE                     |     |                   |
| 32V | TEMPERATURE GAUGE          |     |                   |
| 33V | DIGITAL-FLOAT LEVEL GAUGE  |     |                   |

0	12/17/20	DLW	DDA	CW	ISSUED FOR APPROVAL
REV.	DATE	BY	CHK	APP	REVISION DESCRIPTION

**KIRBY INLAND MARINE**

**VAPOR  
PIPING FLOW DIAGRAM**

SCALE: NONE	<b>DBL 710</b>	REV. <b>0</b>
PAGE: 2 OF 2		