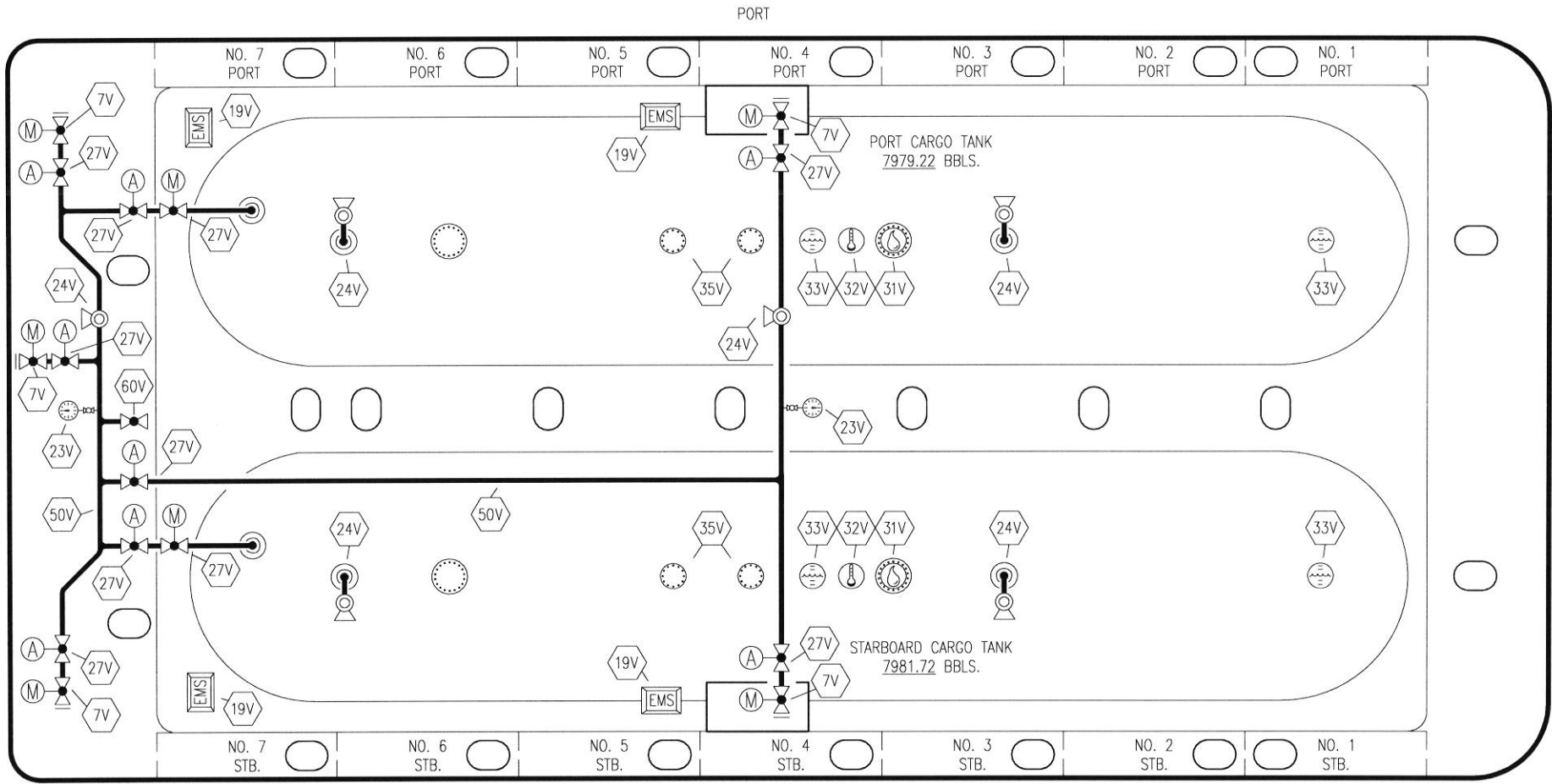


- |     |                          |     |                 |
|-----|--------------------------|-----|-----------------|
| NO  | DESCRIPTION              | NO  | DESCRIPTION     |
| 1C  | CARGO TANK VALVE         | 35C | CROSSOVER VALVE |
| 5C  | HEADER VALVE             | 36C | PRESSURE GAUGE  |
| 7C  | STRIPPING BLOCK VALVE    | 37C | CARGO DROP      |
| 8C  | RELIEF VALVE             | —   | —               |
| 13C | CARGO PIPING BLOCK VALVE | —   | —               |
| 19C | CARGO HEADER             | (A) | AUTOMATIC       |
| 30C | CARGO PIPELINE           | (M) | MANUAL          |
| 34V | LIQUID SPRAY BAR         |     |                 |


REV.	DATE	BY	CHK	APP	REVISION DESCRIPTION
0	12/17/20	DLW	DDA	CW	ISSUED FOR APPROVAL

<b>KIRBY INLAND MARINE</b>	
<b>CARGO PIPING FLOW DIAGRAM</b>	
SCALE: NONE PAGE: 1 OF 2	<b>DBL 709</b> REV. <b>0</b>



- |     |                            |     |                   |
|-----|----------------------------|-----|-------------------|
| NO  | DESCRIPTION                | NO  | DESCRIPTION       |
| 5V  | BLOCK VALVE                | 35V | SPARE (NOZZLE)    |
| 7C  | STRIPPING BLOCK VALVE      | 38V | VAPOR DROP        |
| 7V  | HEADER VALVE               | 50V | VAPOR HEADER      |
| 19V | EMERGENCY ENGINE SHUT DOWN | 60V | CROSSOVER VALVE   |
| 23V | PRESSURE GAUGE             | —   | ABOVE DECK PIPING |
| 24V | PRESSURE RELIEF VALVE      | (A) | AUTOMATIC         |
| 27V | VALVE                      | (M) | MANUAL            |
| 31V | SAMPLE                     |     |                   |
| 32V | TEMPERATURE GAUGE          |     |                   |
| 33V | DIGITAL FLOAT LEVEL GAUGE  |     |                   |

0	12/17/20	DLW	DDA	CW	ISSUED FOR APPROVAL
REV.	DATE	BY	CHK	APP	REVISION DESCRIPTION

<b>KIRBY INLAND MARINE</b> 		
		<b>VAPOR PIPING FLOW DIAGRAM</b>
SCALE: NONE	<b>DBL 709</b>	REV. <b>0</b>
PAGE: 2 OF 2		