

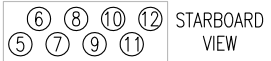
STERN

BOW

PORT

STARBOARD

CARGO HEADER ARRANGEMENT



PORT CARGO HEADERS

- 6 PC - #1
- 8 PC - #2
- 10 PC - #3
- 12 PC - #4

STARBOARD CARGO HEADERS

- 5 SC - #1
- 7 SC - #2
- 9 SC - #3
- 11 SC - #4

- NO. 2C: 4" LOAD VALVE
- NO. 4C: 4" DISCHARGE VALVE
- NO. 5C: HEADER VALVE
- NO. 10V: HIGH LEVEL ALARM
- NO. 11V: 1-METER GAUGE STICK

- NO. 19C: CARGO HEADER
- NO. 30C: CARGO PIPELINE
- NO. 36C: PRESSURE GAUGE
- NO. 37C: CARGO DROP

NOTE
 1: VALVE ARRANGEMENT TYPICAL IN EACH TANK
 2: BELOW EVERY PRESSURE GAUGE @ PUMP IS A CARGO DRAIN VALVE ON BOTTOM OF PIPE
 3: ENVIRO-RITE AW-46 OIL ONLY

THE SHEARER GROUP INC.

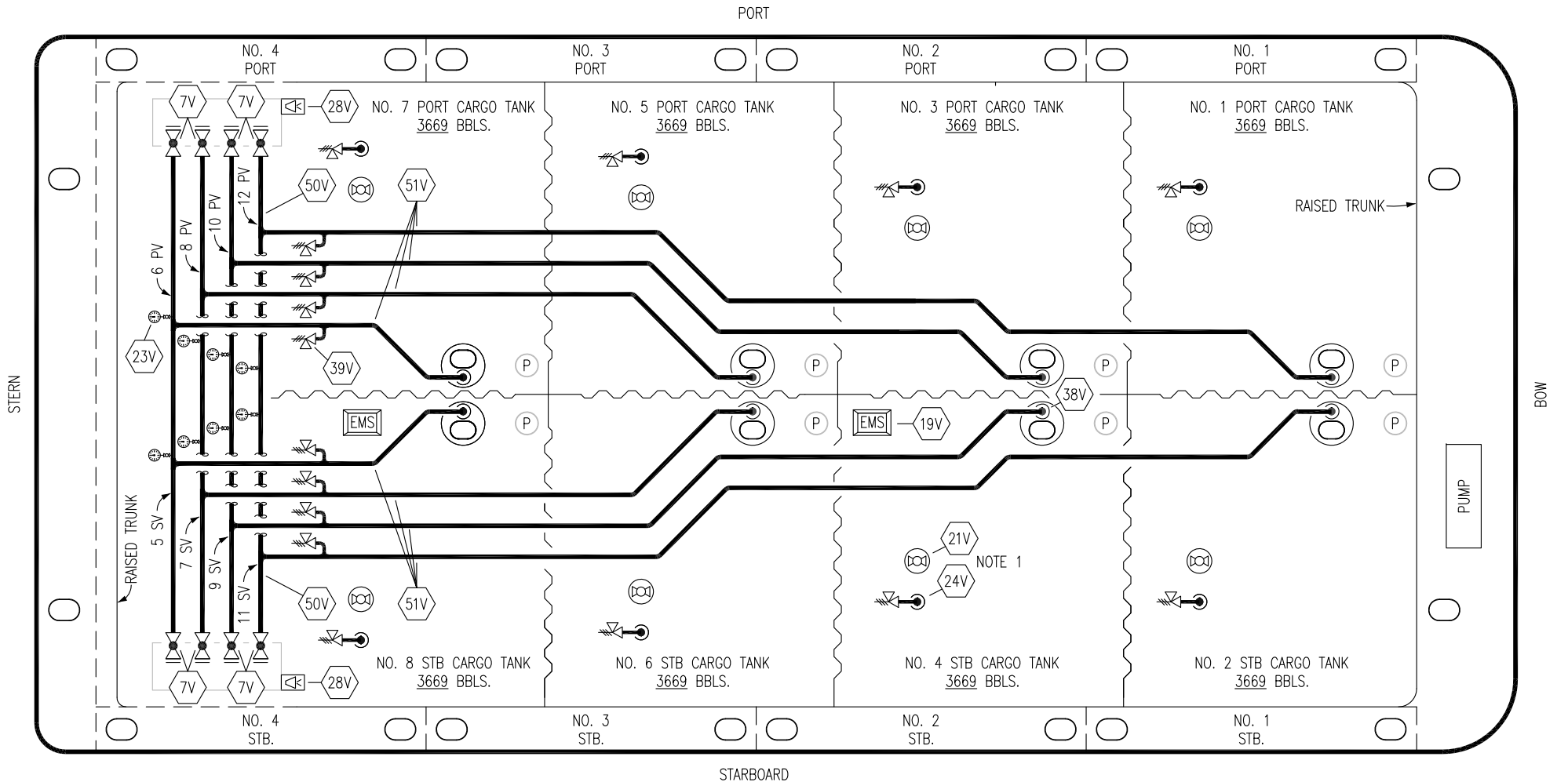
0	07/03/18	WFB	DDA	ISSUED FOR APPROVAL
REV.	DATE	BY	CHK	APP
				REVISION DESCRIPTION

KIRBY INLAND MARINE

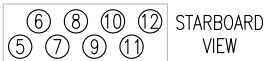
CARGO PIPING FLOW DIAGRAM

SCALE: NONE
PAGE: 1 OF 2

KIRBY AL 2300 REV. **0**



VAPOR HEADER ARRANGEMENT



PORT VAPOR HEADERS

- 6 PV - #1
- 8 PV - #2
- 10 PV - #3
- 12 PV - #4

STARBOARD VAPOR HEADERS

- 5 SV - #1
- 7 SV - #2
- 9 SV - #3
- 11 SV - #4

- | | |
|-----|-----------------------|
| NO | DESCRIPTION |
| 7V | HEADER VALVE |
| 19V | EMERGENCY SHUT DOWN |
| 21V | HERMETIC GAUGE |
| 23V | PRESSURE GAUGE |
| 24V | PRESSURE RELIEF VALVE |

- | | |
|-----|-----------------------|
| NO | DESCRIPTION |
| 28V | DOCK CONNECTION ALARM |
| 38V | VAPOR DROP |
| 39V | PRESSURE/VACUUM VALVE |
| 50V | VAPOR HEADER |
| 51V | VAPOR PIPELINE |
| — | ABOVE DECK PIPING |

NOTE
 1: TYPICAL RIGGING IN EACH TANK
 2: ENVIRO-RITE AW-46 OIL ONLY

THE SHEARER GROUP INC.

0	07/03/18	WFB	DDA	ISSUED FOR APPROVAL
REV.	DATE	BY	CHK	APP
				REVISION DESCRIPTION

KIRBY INLAND MARINE

VAPOR PIPING FLOW DIAGRAM

SCALE: NONE	KIRBY AL 2300	REV. 0
PAGE: 2 OF 2		