

- | | | | |
|-----|--------------------------------|-------|-----------------------|
| NO | DESCRIPTION | NO | DESCRIPTION |
| 3C | SUCTION VALVE | 36C | PUMP DISCHARGE VALVE |
| 4C | DISCHARGE VALVE | 37C | CARGO DROP |
| 5C | HEADER VALVE | 41C | SUCTION BLOCK VALVE |
| 6C | TRANSVERSE HEADER VALVE | 45C | PUMP SUCTION VALVE |
| 7C | TRANSVERSE HEADER BRANCH VALVE | 54C | DISCHARGE METER VALVE |
| 9C | CHECK VALVE | — | — ABOVE DECK PIPING |
| 27C | DRIP PAN VALVE | - - - | BELOW DECK PIPING |
| 28C | DRIP PAN CHECK VALVE | | |
| 31C | BYPASS VALVE | | |
| 35C | CROSSOVER VALVE | | |

NOTE 1: CONTAINMENT

0	08/21/23	MRV	DDA	KW	ISSUED FOR APPROVAL
REV.	DATE	BY	CHK	APP	REVISION DESCRIPTION

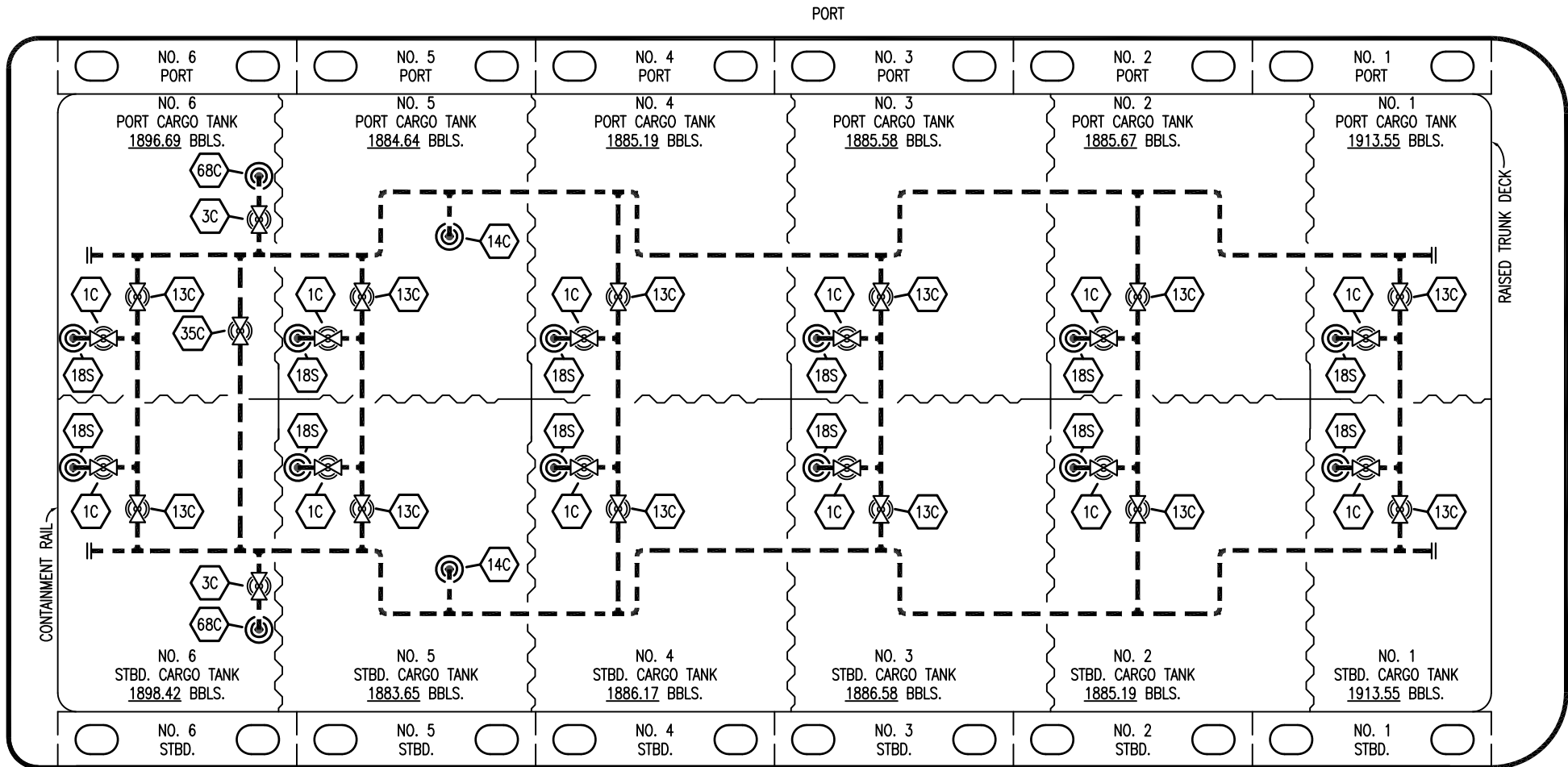
KIRBY INLAND MARINE

ABOVE DECK CARGO PIPING FLOW DIAGRAM

SCALE: NONE
PAGE: 1 OF 2


407

REV. 0



- | NO | DESCRIPTION |
|-------|--------------------------|
| 1C | CARGO TANK VALVE |
| 3C | MASTER SUCTION VALVE |
| 13C | CARGO PIPING BLOCK VALVE |
| 14C | LOAD DROP VALVE |
| 18S | STRIPPING DROP |
| 35C | CROSSOVER VALVE |
| 68C | DEEP WELL CAN |
| — | ABOVE DECK PIPING |
| - - - | BELOW DECK PIPING |

0	08/21/23	MRV	DDA	KW	ISSUED FOR APPROVAL
REV.	DATE	BY	CHK	APP	REVISION DESCRIPTION



KIRBY INLAND MARINE

**BELOW DECK CARGO
PIPING FLOW DIAGRAM**

SCALE: NONE

407

PAGE: 2 OF 2

REV.	0
------	----------