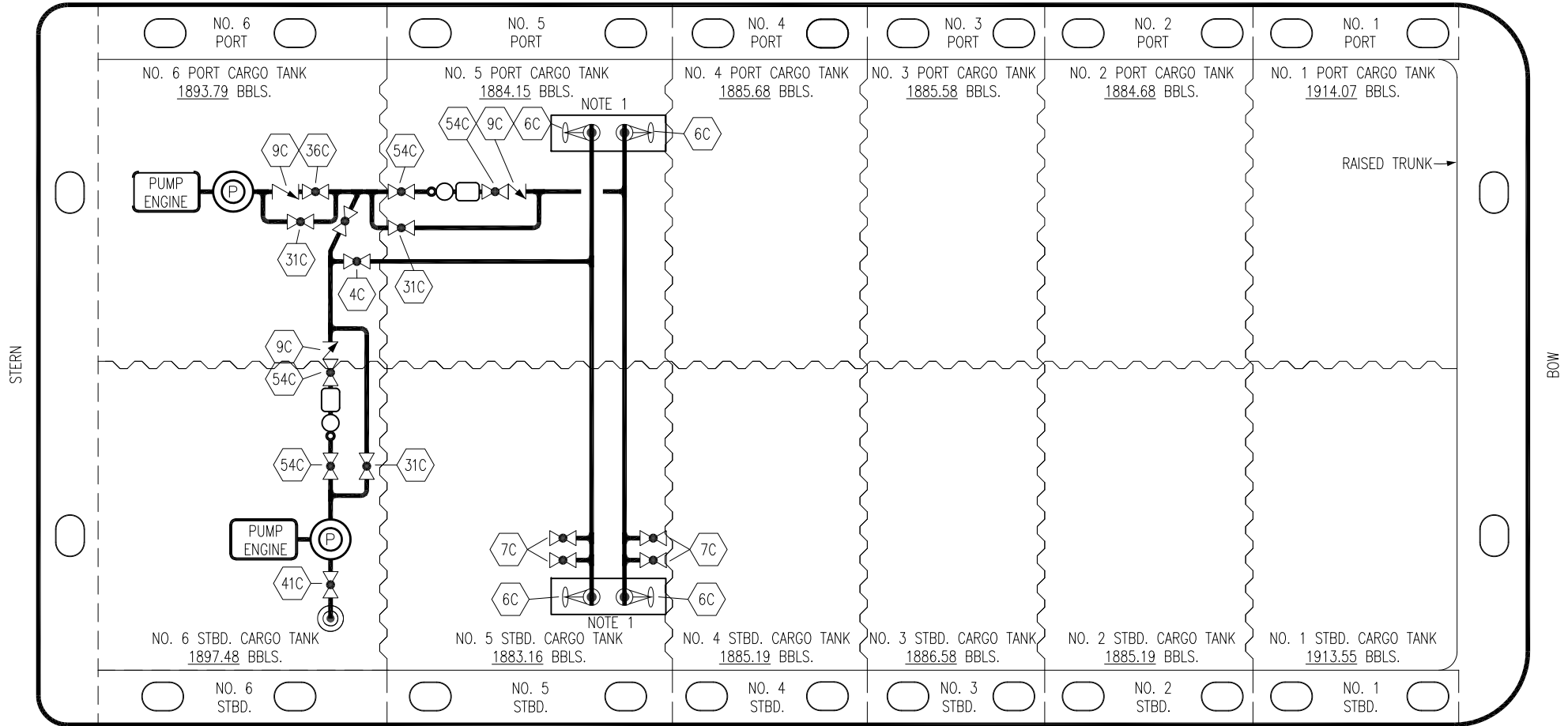


PORT



STARBOARD

NO	DESCRIPTION	NO	DESCRIPTION
3C	SUCTION VALVE	36C	PUMP DISCHARGE VALVE
4C	DISCHARGE VALVE	37C	CARGO DROP
5C	HEADER VALVE	41C	SUCTION BLOCK VALVE
6C	TRANSVERSE HEADER VALVE	45C	PUMP SUCTION VALVE
7C	TRANSVERSE HEADER BRANCH VALVE	54C	DISCHARGE METER VALVE
9C	CHECK VALVE		ABOVE DECK PIPING
27C	DRIP PAN VALVE		BELOW DECK PIPING
28C	DRIP PAN CHECK VALVE		
31C	BYPASS VALVE		

NOTE 1: CONTAINMENT P/S

SOUTHWEST SHIPYARD -- EX: N/A

0	09/26/22	MRV	DDA	WHI	ISSUED FOR APPROVAL
REV.	DATE	BY	CHK	APP	REVISION DESCRIPTION

KIRBY INLAND MARINE

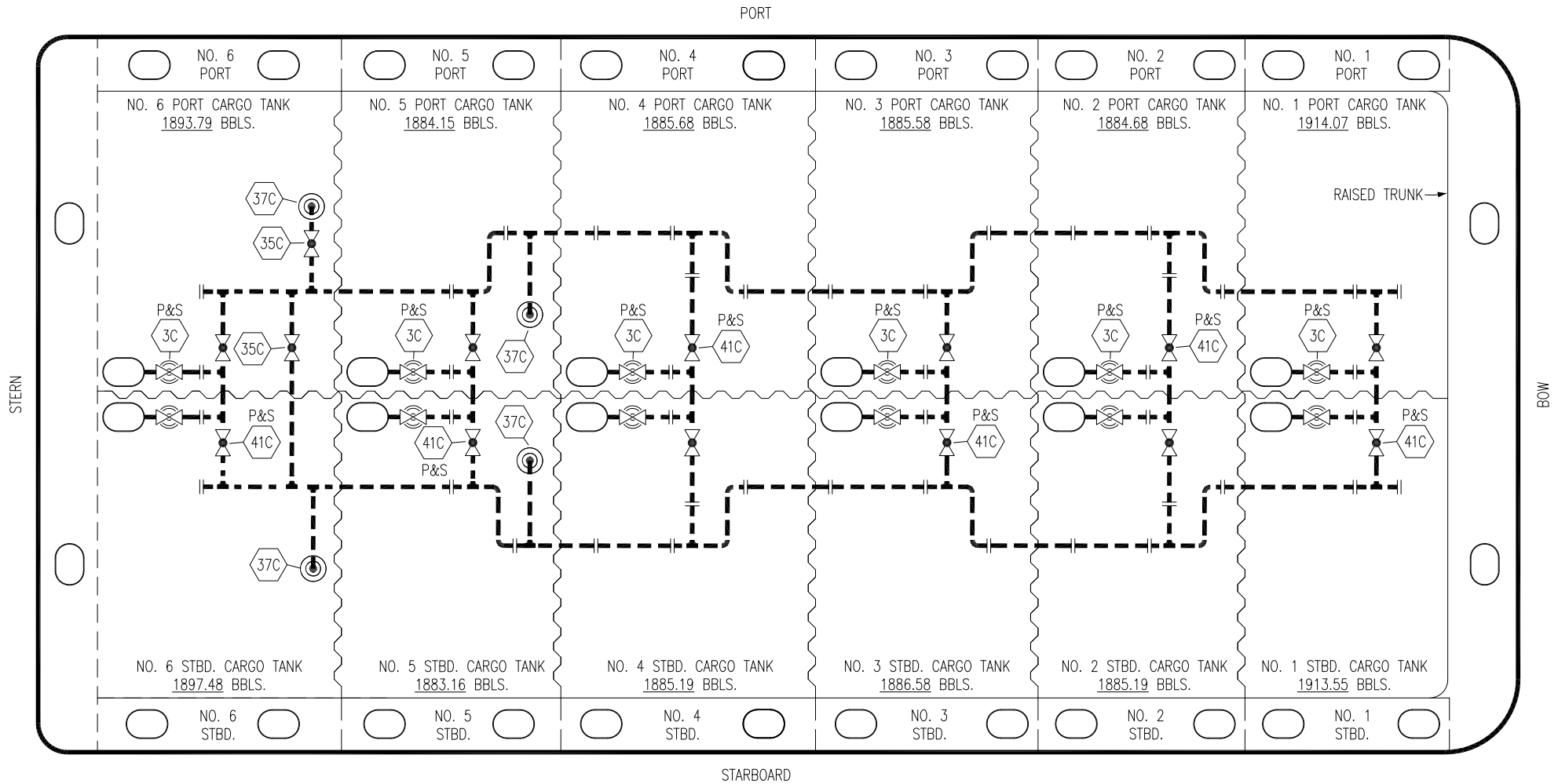
**ABOVE DECK CARGO
PIPING FLOW DIAGRAM**

SCALE: NONE

406

PAGE: 1 OF 2


REV. **0**



- | | | | |
|-----|-------------------------|-------|------------------------------|
| NO | DESCRIPTION | NO | DESCRIPTION |
| 3C | MASTER SUCTION VALVE | 41C | SUCTION BLOCK VALVE |
| 35C | SUCTION CROSSOVER VALVE | 45C | PUMP SUCTION CROSSOVER VALVE |
| 37C | CARGO DROP | | |
| | | — | ABOVE DECK PIPING |
| | | - - - | BELOW DECK PIPING |

NOTE 1: CONTAINMENT P/S

SOUTHWEST SHIPYARD -- EX: N/A

						KIRBY INLAND MARINE 	
						BELOW DECK CARGO PIPING FLOW DIAGRAM	
0	09/26/22	MRV	DDA	WHI	ISSUED FOR APPROVAL		SCALE: NONE
REV.	DATE	BY	CHK	APP	REVISION	DESCRIPTION	PAGE: 2 OF 2
						406	
						REV. 0	