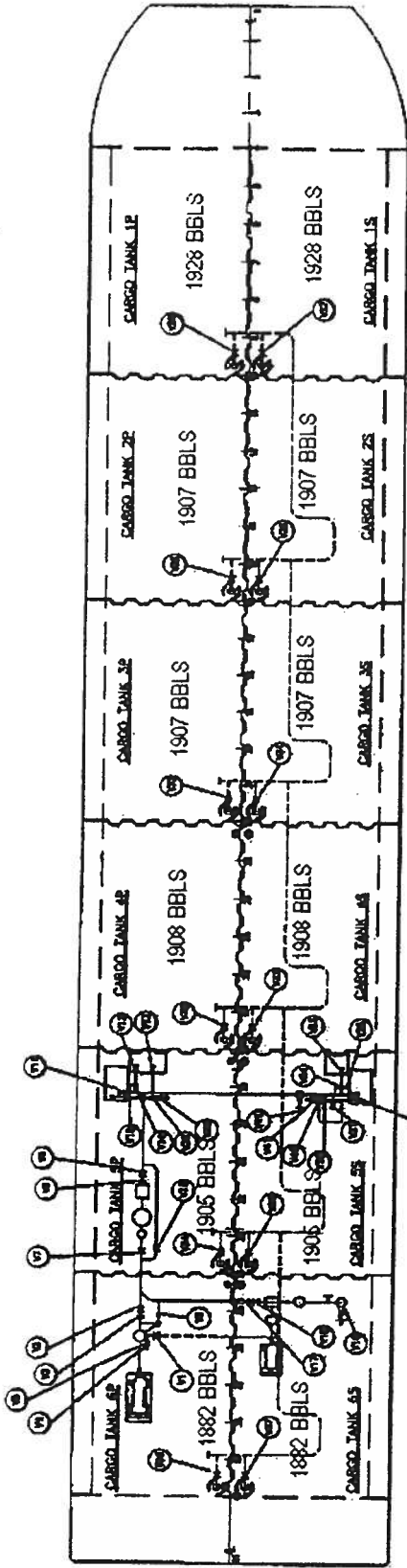


Barge Name: 403



403 PIPING DIAGRAM & VALVE LABELING

- V1 PORT PUMP SUCTION VALVE T10
- V2 PORT PUMP EXCHANGE VALVE T10
- V3 PORT PUMP CHECK VALVE
- V4 PORT PUMP VENT SOLARON VALVE
- V5 PORT PUMP VENT CHECK VALVE
- V6 PORT PUMP VENT BY-PASS VALVE
- V7 METER STATION INLET VALVE
- V8 METER STATION CHECK VALVE
- V9 METER STATION BY-PASS VALVE
- V10 PORT TRANSFER LOAD/VENT. HSB. VALVE
- V11 PORT TRANSFER DISCH. HSB. PMS. VALVE
- V12 PORT TRANSFER DISCH. HSB. PMS. VALVE
- V13 PORT HEADSUMP PMS VALVE
- V14 PORT HEADSUMP PMS CHECK VALVE
- V15 STAR. PUMP SUCTION VALVE
- V16 STAR. PUMP EXCHANGE VALVE
- V17 STAR. PUMP CHECK VALVE
- V18 CARGO LOADING VALVE
- V19 STAR. TRANSFER LOAD/VENT. HSB. VALVE
- V20 STAR. TRANSFER DISCH. HSB. PMS. VALVE
- V21 STAR. TRANSFER DISCH. HSB. PMS. VALVE
- V22 STAR. HEADSUMP PMS VALVE
- V23 STAR. HEADSUMP PMS CHECK VALVE
- V24 PORT CARGO SUCTION VALVE T11
- V25 PORT CARGO SUCTION VALVE T12
- V26 PORT CARGO SUCTION VALVE T13
- V27 PORT CARGO SUCTION VALVE T14
- V28 PORT CARGO SUCTION VALVE T15
- V29 PORT CARGO SUCTION VALVE T16
- V30 PORT CARGO SUCTION VALVE T17
- V31 PORT CARGO SUCTION VALVE T18
- V32 PORT CARGO SUCTION VALVE T19
- V33 PORT CARGO SUCTION VALVE T20
- V34 PORT CARGO SUCTION VALVE T21
- V35 PORT CARGO SUCTION VALVE T22
- V36 PORT CARGO SUCTION VALVE T23
- V37 PORT CARGO SUCTION VALVE T24
- V38 PORT CARGO SUCTION VALVE T25
- V39 PORT CARGO SUCTION VALVE T26
- V40 PORT CARGO SUCTION VALVE T27
- V41 PORT CARGO SUCTION VALVE T28
- V42 PORT CARGO SUCTION VALVE T29
- V43 PORT CARGO SUCTION VALVE T30
- V44 PORT CARGO SUCTION VALVE T31
- V45 PORT CARGO SUCTION VALVE T32
- V46 PORT CARGO SUCTION VALVE T33
- V47 PORT CARGO SUCTION VALVE T34
- V48 PORT CARGO SUCTION VALVE T35
- V49 PORT CARGO SUCTION VALVE T36
- V50 PORT CARGO SUCTION VALVE T37

CARGO LOADING AND UNLOADING

- TO LOAD
- OPEN VALVES - V1, V16, V9 & V10
- CLOSE VALVES - V1, V16, V9 & V10
- TO UNLOAD FROM STAR. PUMPS
- OPEN VALVES - V18, V17, V1, V11 OR V12, V13 OR V20 OR V21, V22, V23 V25 THRU 31
- CLOSE VALVES - V1, V2, & V18
- TO UNLOAD FROM PORT PUMPS
- OPEN VALVES - V1, V2, V9, V7 V11, V11 OR V20 V25 THRU 31
- CLOSE VALVES - V16, V17, & V18, V18 & V21