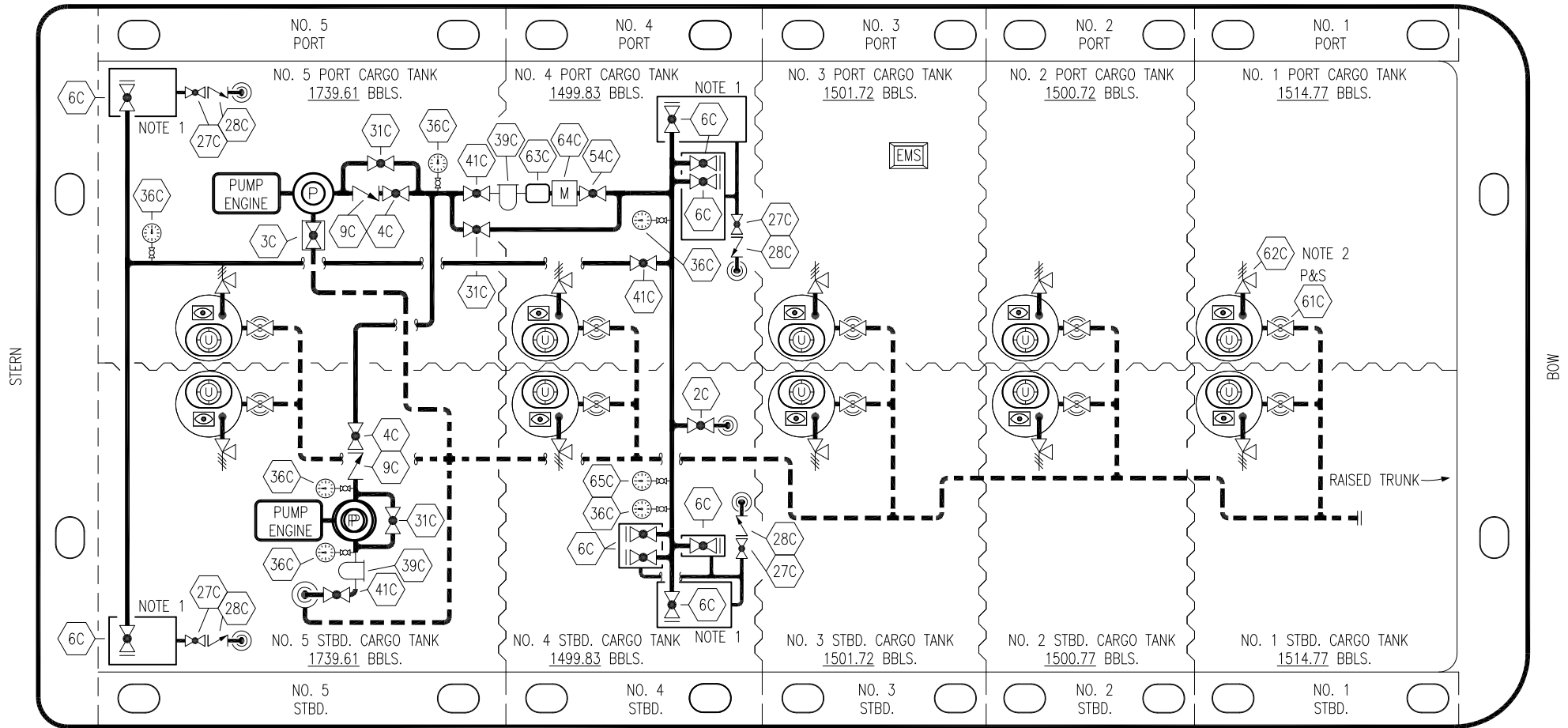


PORT

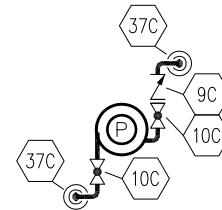


- NO. 2C LOAD VALVE
- NO. 3C MASTER SUCTION VALVE
- NO. 4C DISCHARGE VALVE
- NO. 6C TRANSVERSE HEADER VALVE
- NO. 9C CHECK VALVE
- NO. 10C BURP VALVE
- NO. 27C DRIP PAN VALVE
- NO. 28C DRIP PAN CHECK VALVE
- NO. 31C BYPASS VALVE
- NO. 36C PRESSURE GAUGE
- NO. 37C CARGO DROP

- NO. 39C STRAINER
- NO. 41C SUCTION BLOCK VALVE
- NO. 45C PUMP SUCTION VALVE
- NO. 54C DISCHARGE METER VALVE
- NO. 61C SUCTION VALVE
- NO. 62C P/V VALVE
- NO. 63C AIR SEPARATOR
- NO. 64C METER
- NO. 65C TEMPERATURE GAUGE
- ABOVE DECK PIPING
- - - BELOW DECK PIPING

STARBOARD

NOTE 2: TYPICAL RIGGING IN EACH TANK
NOTE 1: CONTAINMENT P/S



DEEPWELL CAN PUMP DETAIL

REV.	DATE	BY	CHK	APP	REVISION DESCRIPTION
1	11/17/21	MRV	DDA	CW	REVISED PER CLIENT REVISIONS
0	10/22/19	NRB	DDA		ISSUED FOR APPROVAL

KIRBY INLAND MARINE

CARGO
PIPING FLOW DIAGRAM

301

SCALE: NONE
PAGE: 1 OF 2

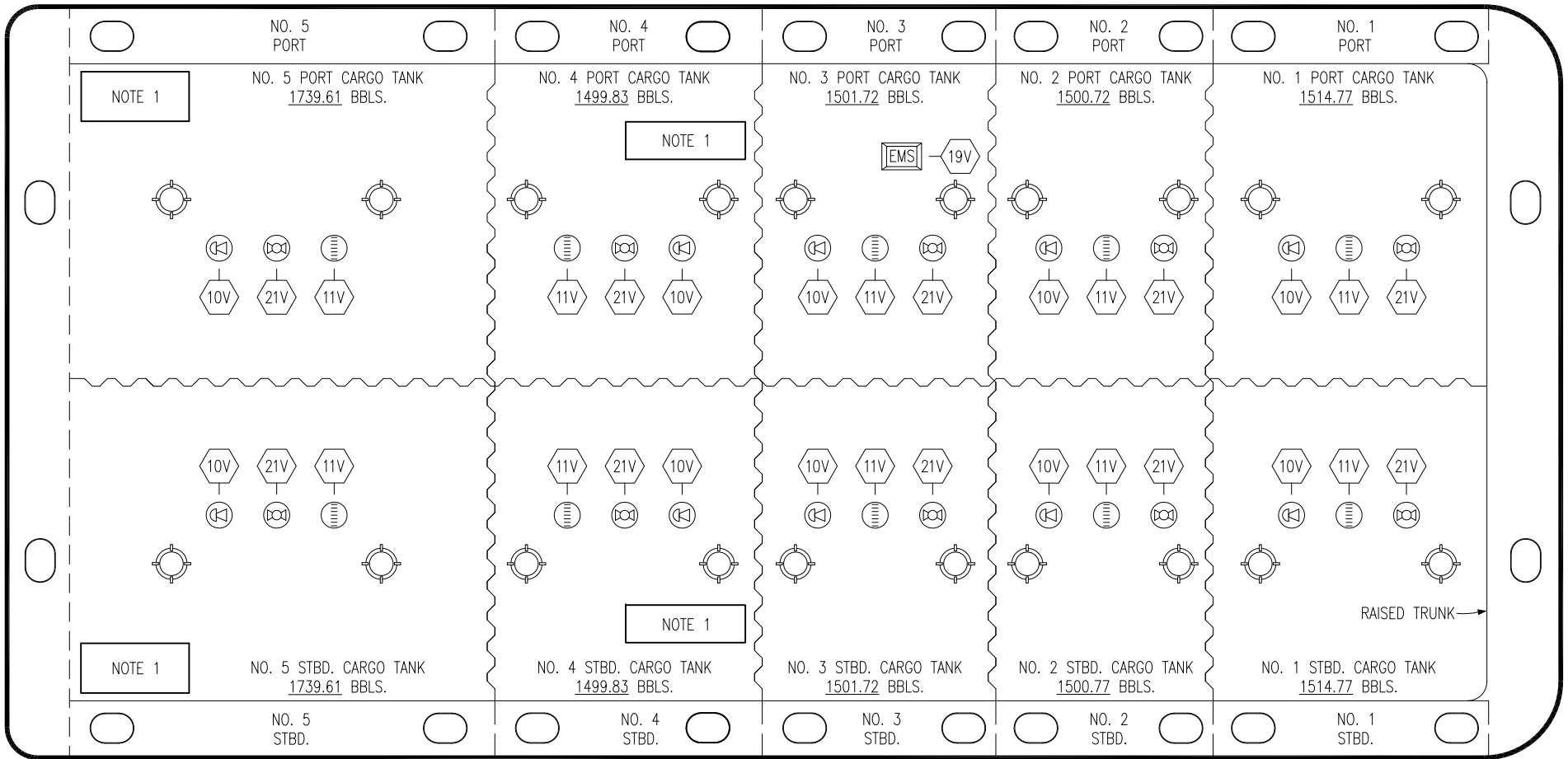
REV. **1**

PORT

STERN

BOW

STARBOARD



- | | |
|-----|----------------------------|
| NO | DESCRIPTION |
| 10V | HIGH LEVEL/OVERFILL ALARM |
| 11V | GAUGE STICK |
| 19V | EMERGENCY ENGINE SHUT DOWN |
| 21V | HERMETIC GAUGE |
| | ABOVE DECK PIPING |

NOTE 2: TYPICAL RIGGING IN EACH TANK
 NOTE 1: CONTAINMENT P/S

0	11/17/21	MRV	DDA	CW	ISSUED FOR APPROVAL	
REV.	DATE	BY	CHK	APP	REVISION	DESCRIPTION

KIRBY INLAND MARINE

DECK GENERAL ARRANGEMENT
TANK & ALARM LAYOUT

SCALE: NONE	301
PAGE: 2 OF 2	REV. 0