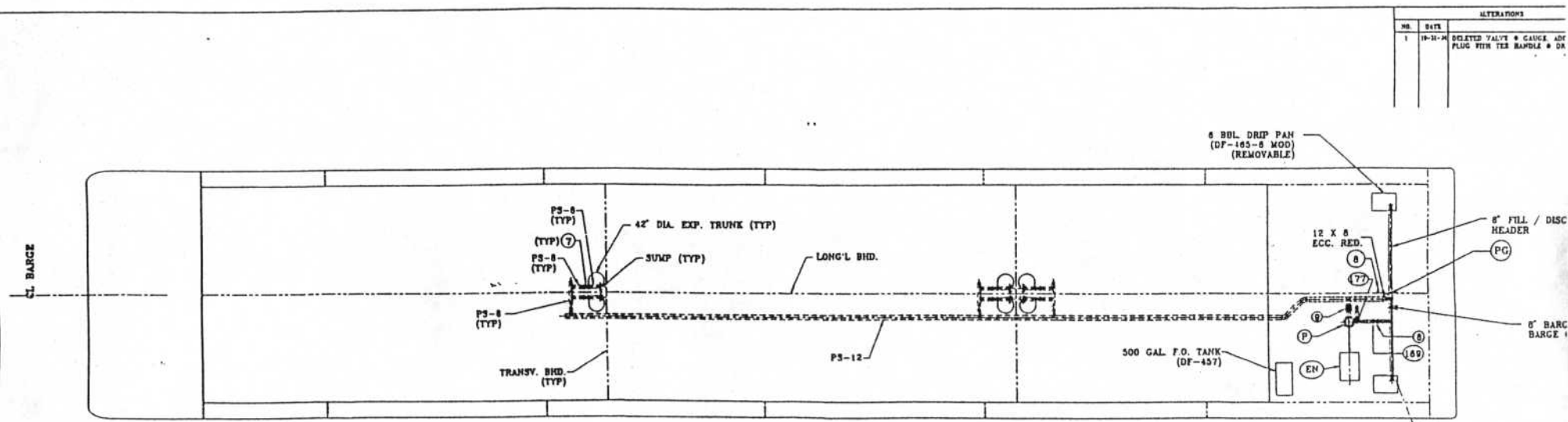


ALTERATIONS	
NO.	DATE
1	10-21-64

DELETED VALVE & GAUGE AND  
PLUG WITH TEE HANDLE & DR

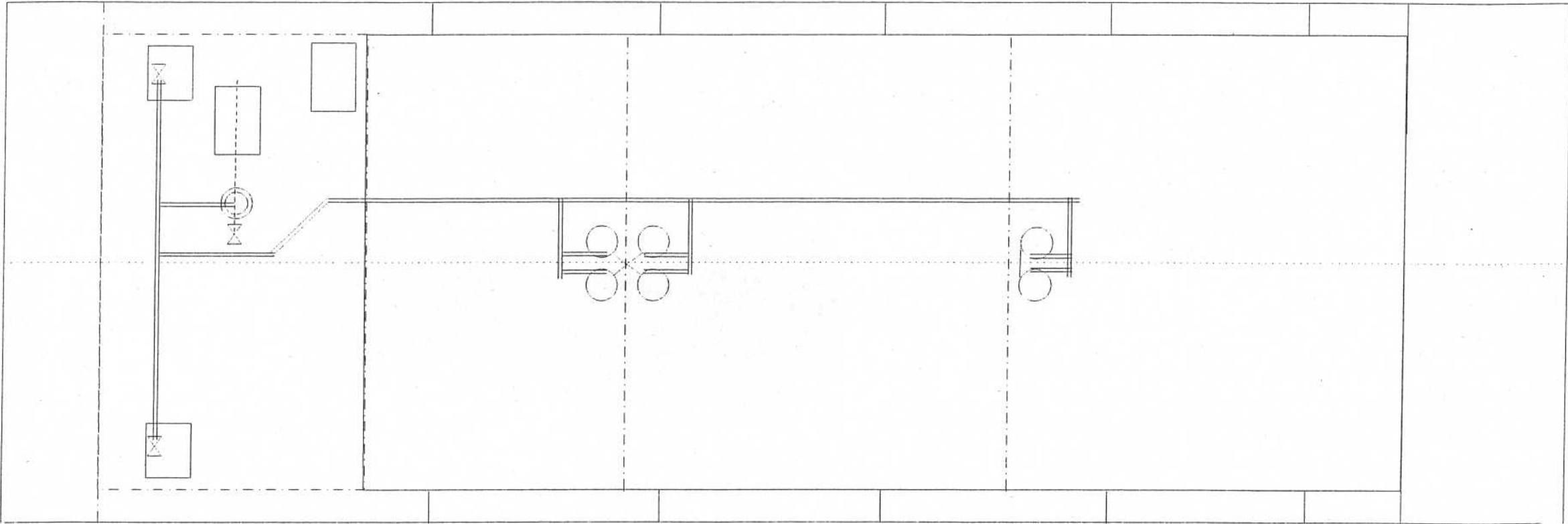


**PLAN**  
SCALE 3/32" = 1'-0"

NOTE: BELOW DECK PIPING SHOWN AS DOTTED,  
ABOVE DECK PIPING SHOWN AS SOLID.

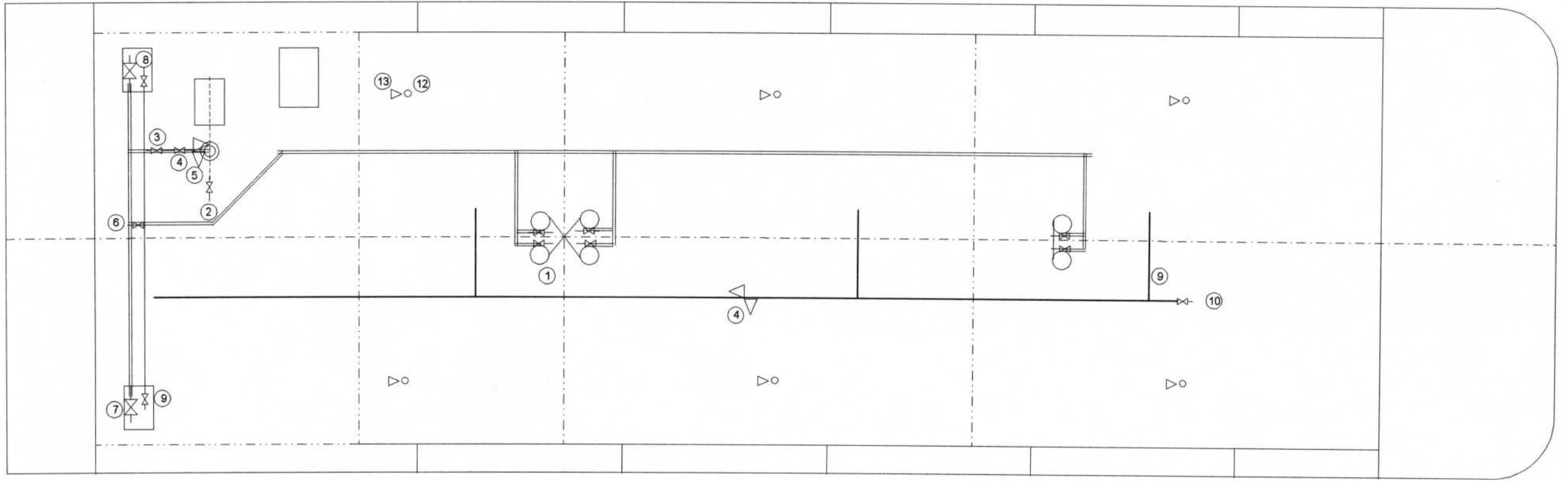
CARGO PIPING  
HTCO 3009  
HTCO 3010

HIGMAN BARGE LINES, INC.  
HTCO - 3009  
CARGO PIPING



NOTE: BELOW DECK PIPING SHOWN AS DOTTED  
BELOW DECK PIPING SHOWN AS SOLID

HIGMAN BARGE LINES, INC.  
 HTCO - 3009, AND HTCO - 3010  
 CARGO AND VAPOR SYSTEM



CARGO SYSTEM VALVES

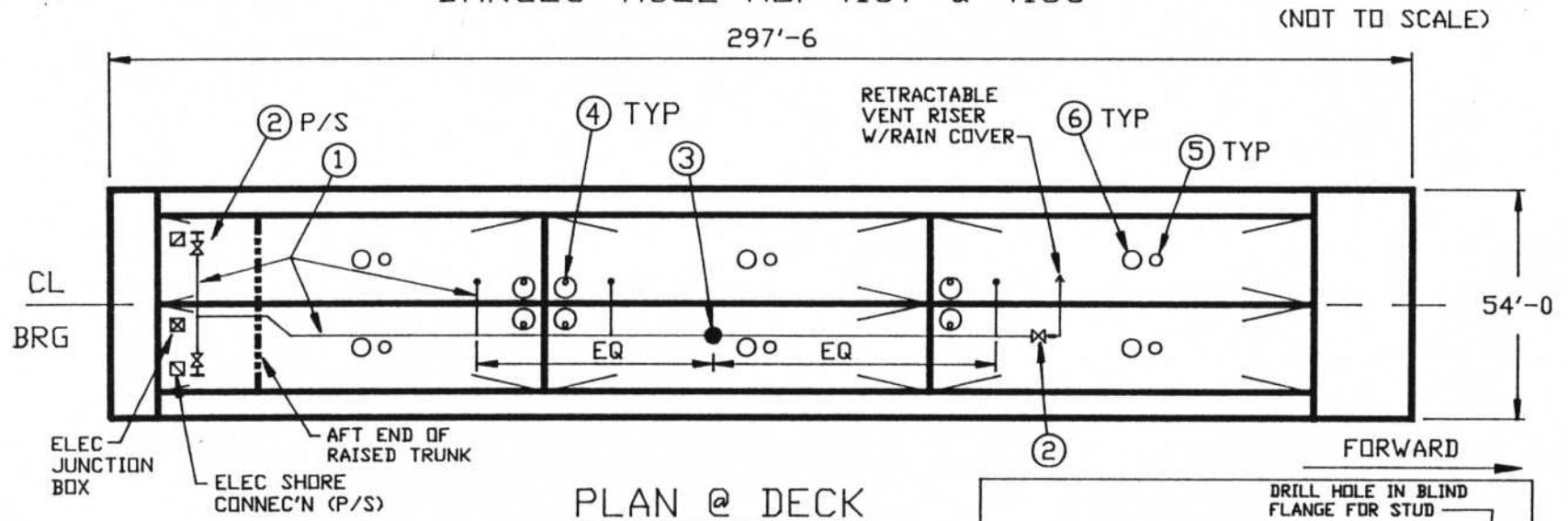
- 1. TANK VALVES
- 2. PUMP SUCTION VALVE
- 3. PUMP DISCHARGE VALVE
- 4. PUMP DISCHARGE CHECK VALVE
- 5. PUMP RELIEF VALVE
- 6. LOADING VALVE
- 7. HEADER VALVE
- 8. DRIP PAN

PV HEADER VALVES

- 9. HEADER VALVE
- 10. VENT STACK
- 11. PV VALVE
- 12. STICK GAUGE
- 13. ELEC. ALARM

# HIGMAN TOWING COMPANY

## BARGES: HULL NO. 4157 & 4158



PIECE MARK	DESCRIPTION
1	PIPING
2	SHUTOFF VALVE
3	PV VALVE
4	VISUAL TANK LEVEL INDICATOR (SIGHTGLASS)
5	HIGH LEVEL INDICATOR (DIPSTICK)
6	HIGH LEVEL SENSOR ALARM & SHUTDOWN DEVICE

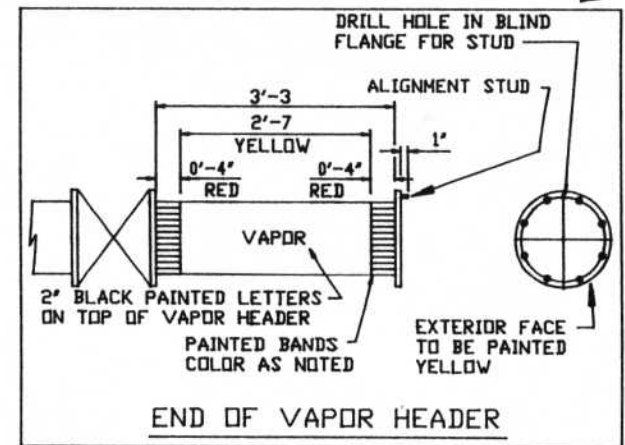
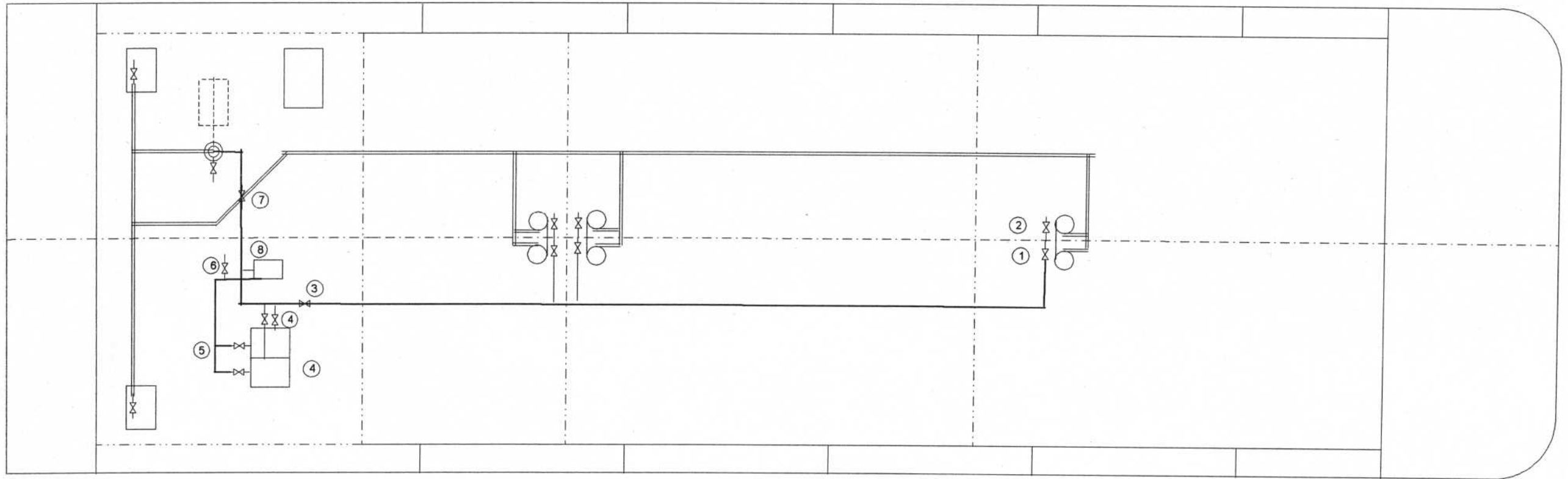


DIAGRAM OF VAPOR CONTROL SYSTEM  
FIGURE 1

HIGMAN BARGE LINES, INC.  
HTCO - 3009, AND HTCO - 3010  
STRIPPING SYSTEM



1. TANK VALVE
2. PIPELINE STRIPPING VALVE
3. BLOCK VALVE
4. SLOP TANK STRIPPING VALVE
5. SLOP TANK LOADING VALVE
6. SHORE DISCHARGE
7. DEEP WELL DRAIN
8. PUMP
9. SLOP TANK