

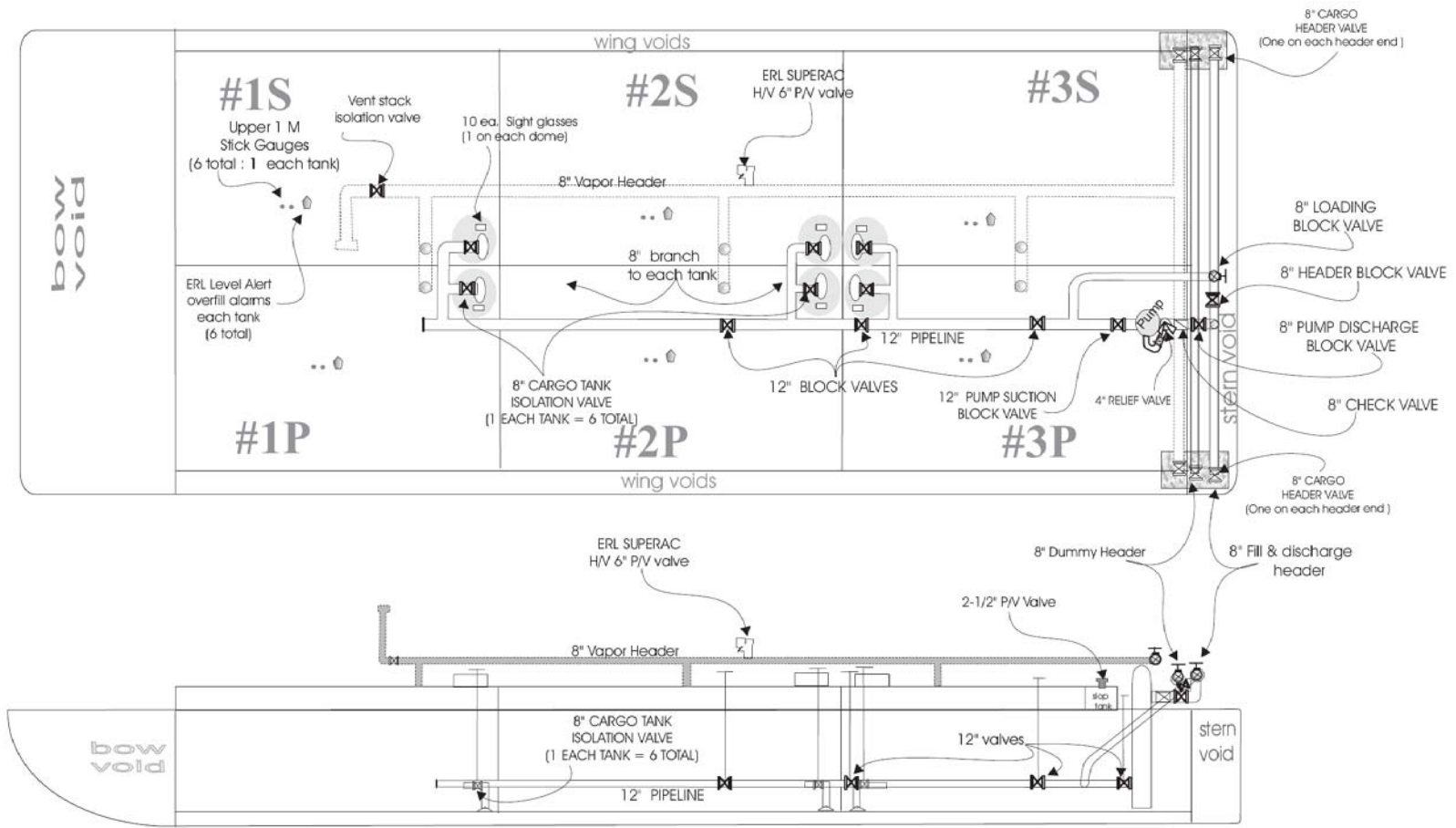
Hines Furlong Line, Inc.  
**HFL 401 CARGO TRANSFER PROCEDURES**

**CARGO PIPING DIAGRAM**

pipng diagram  
 297 x 54 - DOUBLE HULL

8" CARGO  
 HEADER VALVE

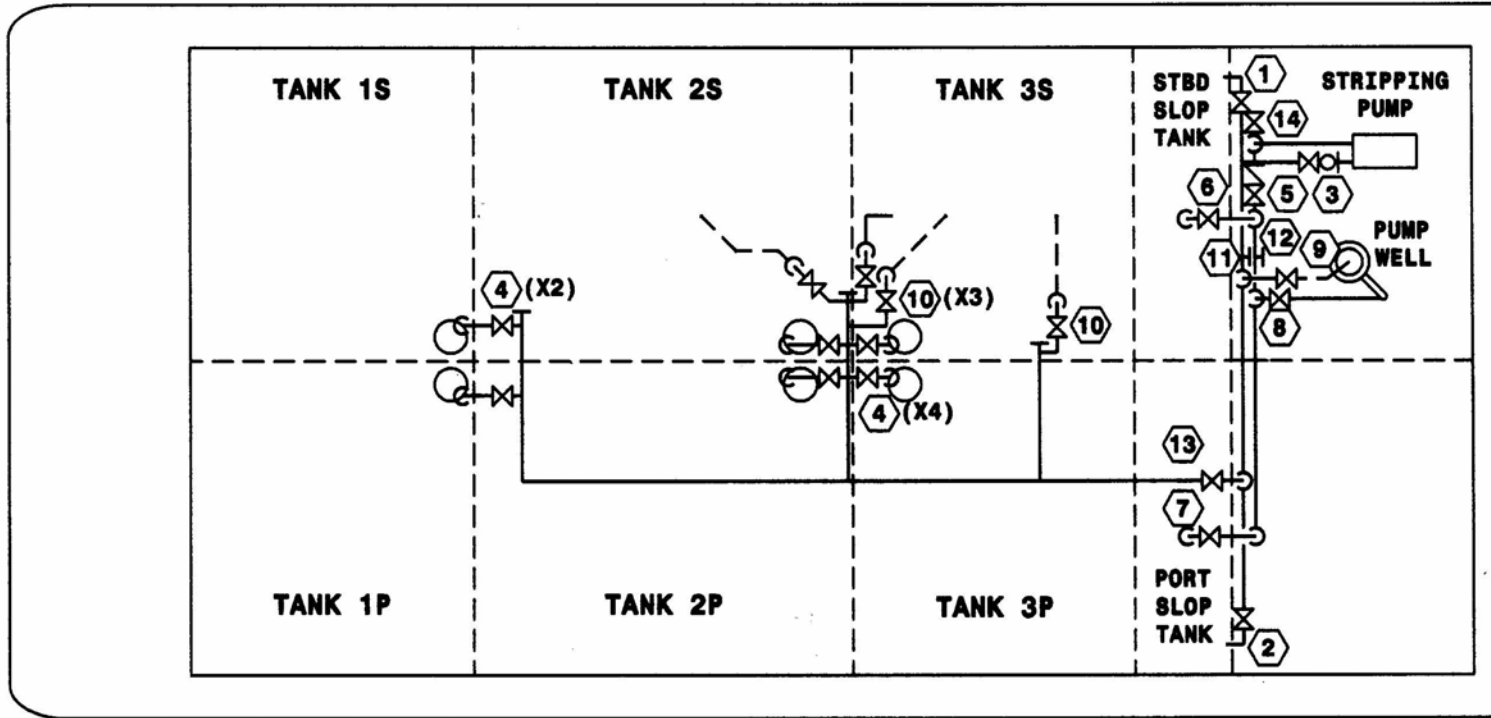
OPEN to pump  
 CLOSE to load  
 CLOSE to pump  
 OPEN to load



NOT TO SCALE

Hines Furlong Line, Inc.  
**HFL 401 CARGO TRANSFER PROCEDURES**

STRIPPING PIPING DIAGRAM



**STRIPPING PIPING**

- |                                 |                                      |                                  |                              |
|---------------------------------|--------------------------------------|----------------------------------|------------------------------|
| 1 1 1/2" STBD SLOP TANK SUCTION | 5 2" STRIPPING PUMP DISCHARGE        | 9 1 1/2" PUMPWELL SUCTION        | 13 2" STRIPPING HEADER BLOCK |
| 2 1 1/2" PORT SLOP TANK SUCTION | 6 2" STBD SLOP TANK FILL             | 10 1 1/2" CARGO HEADER STRIPPING |                              |
| 3 2" STRIPPING SUCTION BLOCK    | 7 2" PORT SLOP TANK FILL             | 11 2" SUCTION HOSE CONNECTION    |                              |
| 4 1 1/2" SUMP SUCTION           | 8 2" STRIPPING DISCHARGE TO PUMPWELL | 12 2" DISCHARGE HOSE CONNECTION  |                              |

Hines Furlong Line, Inc.  
HFL 401 CARGO TRANSFER PROCEDURES

VAPOR CONTROL SYSTEM

155.750 (c) (1) VAPOR COLLECTION SYSTEM LINE DIAGRAMS

