

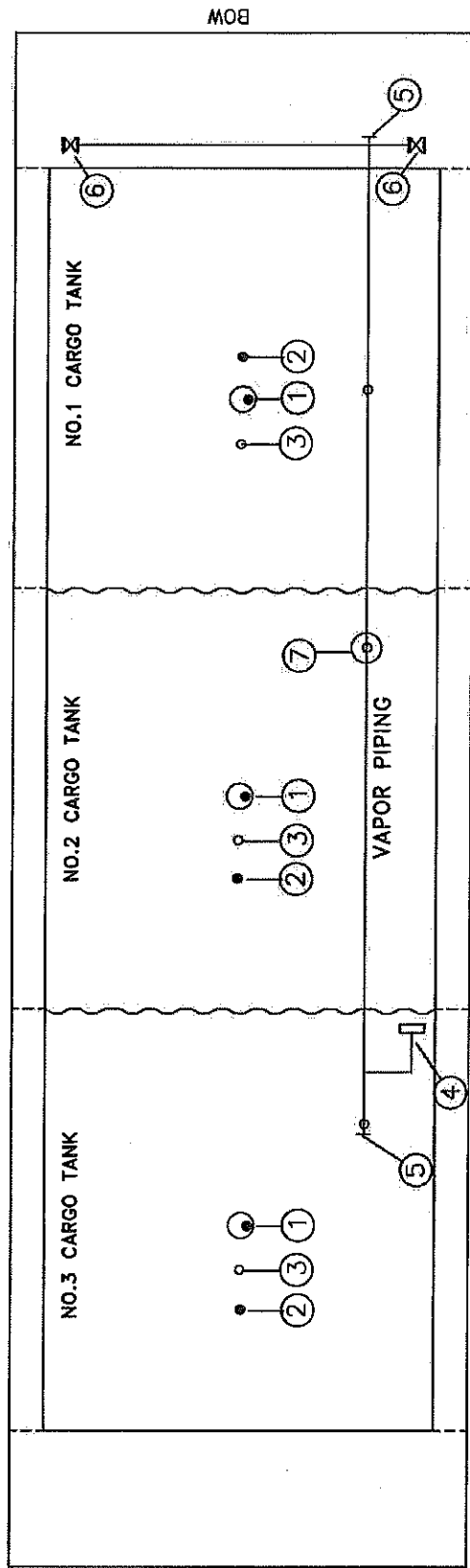
CARGO & STRIPPING
DIAGRAM

HFL 220 SS

LEGEND

NO	DESCRIPTION
1	CARGO HEADER VALVE
2	PUMP DISCHARGE VALVE
3	CARGO RELIEF VALVE
4	PUMPWELL DRAIN VALVE
5	STRIPPING DROP SUMP
6	STRIPPING CLEANOUT
7	STRIPPING DROP @ PUMP WELL
8	INLINE BLOCK VALVE
9	DEEPWELL BLOCK VALVE
10	CARGO TANK LOAD/DISCHARGE VALVE
11	CARGO LOAD VALVE

Effective Date:	Revision No.	Page
05/27/14	0	1 of 2



LEGEND

NO	DESCRIPTION
1	METER STICK GAUGE
2	HERMETIC GAUGE
3	HIGH LEVEL/OVERFILL ALARM
4	VENT STACK
5	VAPOR CLEANOUT
6	VAPOR HEADER VALVE
7	P/V VALVE

VAPOR PIPING, GAUGING AND OVERFILL PROTECTION

HFL 220 SS

Effective Date:	Revision No.	Page
05/27/14	0	2 of 2