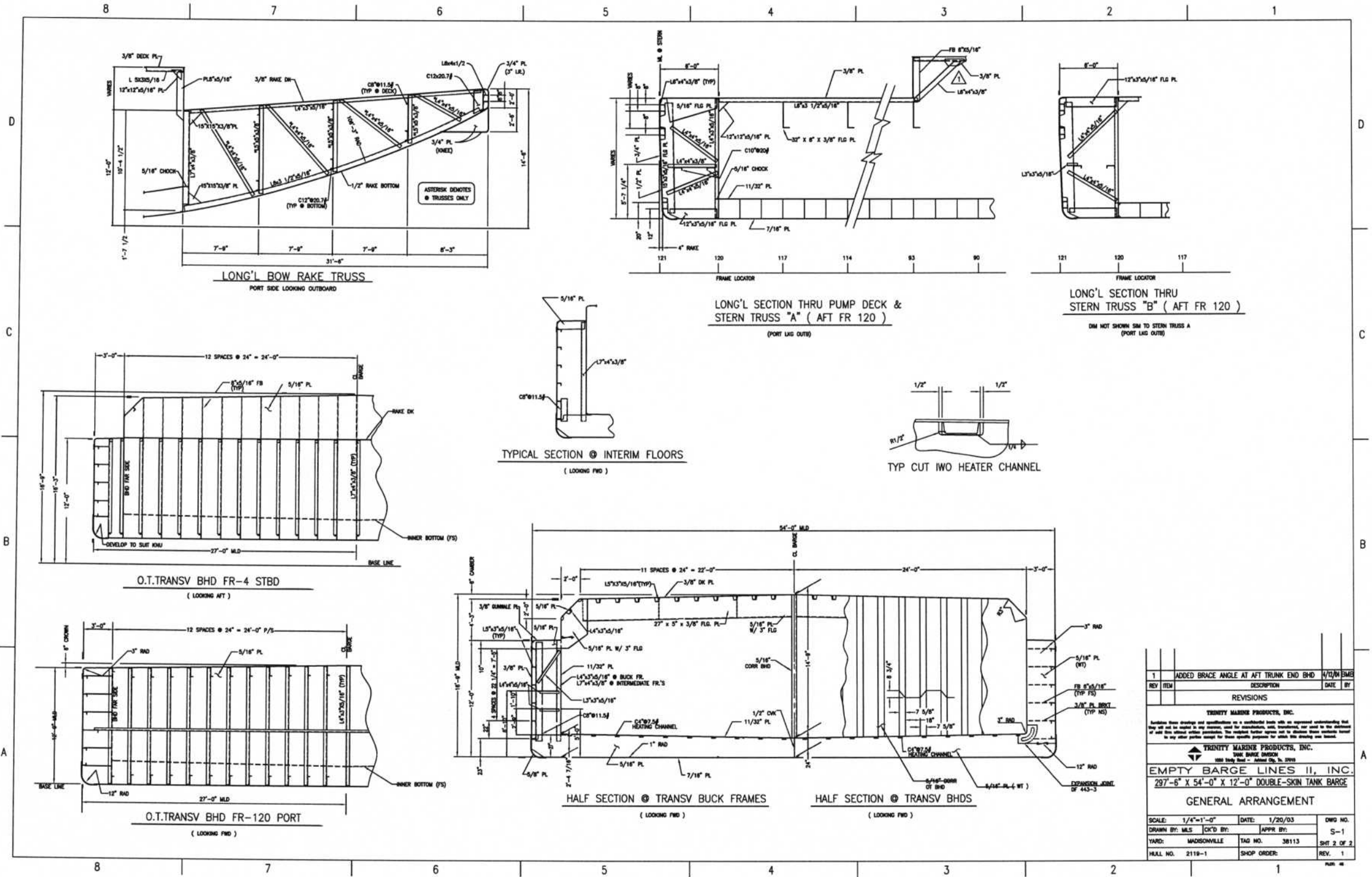


NOTES

- SCANTLINGS BASED ON BUILDERS INTERPRETATION OF 1997 AMERICAN BUREAU OF SHIPPING RULES FOR BUILDING AND CLASSING STEEL VESSELS FOR SERVICE ON RIVERS AND INTRACASTAL WATERWAYS. CARGO TANK SCANTLINGS ARE BUILT TO TANK BOUNDARY (DEEP TANK) BULKHEAD RULES FOR SPECIFIC GRAVITY OF 1.05.
- ALL MATERIALS, WELDING PROCEDURES AND TESTING SHALL MEET THE REQUIREMENTS OF THE U.S.C.G.
- ALL DETAILS OF CONSTRUCTION AND WORKMANSHIP SHALL BE DONE TO THE STANDARDS SET FOR INLAND BARGES.
- CARGO TANK STRUCTURE BUILT FOR 3.0 PSIG (PRESSURE), 0.50 PSIG (VACUUM).
- ALL INNER BOTTOM, WING, AND END COMPARTMENTS ARE DRY VOIDS.

1	1	DELETED DF-129 BUTTON ON PORT STERN CORNER	1/28/03/MLS
2	1	CORRECTED ULLAGE HATCH ON EXPANSION	1/28/03/MLS
3	1	EXPANSION DOME FROM DF 489 TO DF-569.	
		ADDED NOTES FOR DF 464-5 HATCHES.	1/28/03/MLS

REV	ITEM	DESCRIPTION	DATE	BY
REVISIONS				
TRINITY MARINE PRODUCTS, INC.				
<small>TRINITY MARINE PRODUCTS, INC. TANK BARGE DIVISION 1828 Holly Road - Ardmore City, Pa. 19003</small>				
EMPTY BARGE LINES II, INC. 297'-6" X 54'-0" X 12'-0" DOUBLE-SKIN TANK BARGE				
GENERAL ARRANGEMENT				
SCALE:	3/32"=1'-0"	DATE:	1/20/03	DWG NO.
DRAWN BY:	M.S.	CK'D BY:	APP'R BY:	S-1
YARD:	MADISONVILLE	TAG NO.:	38113	SHT 1 OF 2
HULL NO.:	2119-1	SHOP ORDER:		REV. 1



REV	ITEM	DESCRIPTION	DATE	BY
1		ADDED BRACE ANGLE AT AFT TRUNK END BHD	4/2/03	EMR
REVISIONS				
TRINITY MARINE PRODUCTS, INC.				
<small> TRINITY MARINE PRODUCTS, INC. TANK BARGE DIVISION 2222 Holly Road - Atlanta, Ga. 30329 </small>				
EMPTY BARGE LINES II, INC. 297'-6" X 54'-0" X 12'-0" DOUBLE-SKIN TANK BARGE				
GENERAL ARRANGEMENT				
SCALE:	1/4"=1'-0"	DATE:	1/20/03	DWG NO.
DRAWN BY:	M.S.	CHK'D BY:	APR BY:	S-1
YARD:	MADISONVILLE	TAG NO.:	38113	SHT. 2 OF 2
HULL NO.:	2119-1	SHOP ORDER:		REV. 1