

TRINITY



**KIRBY INLAND MARINE**

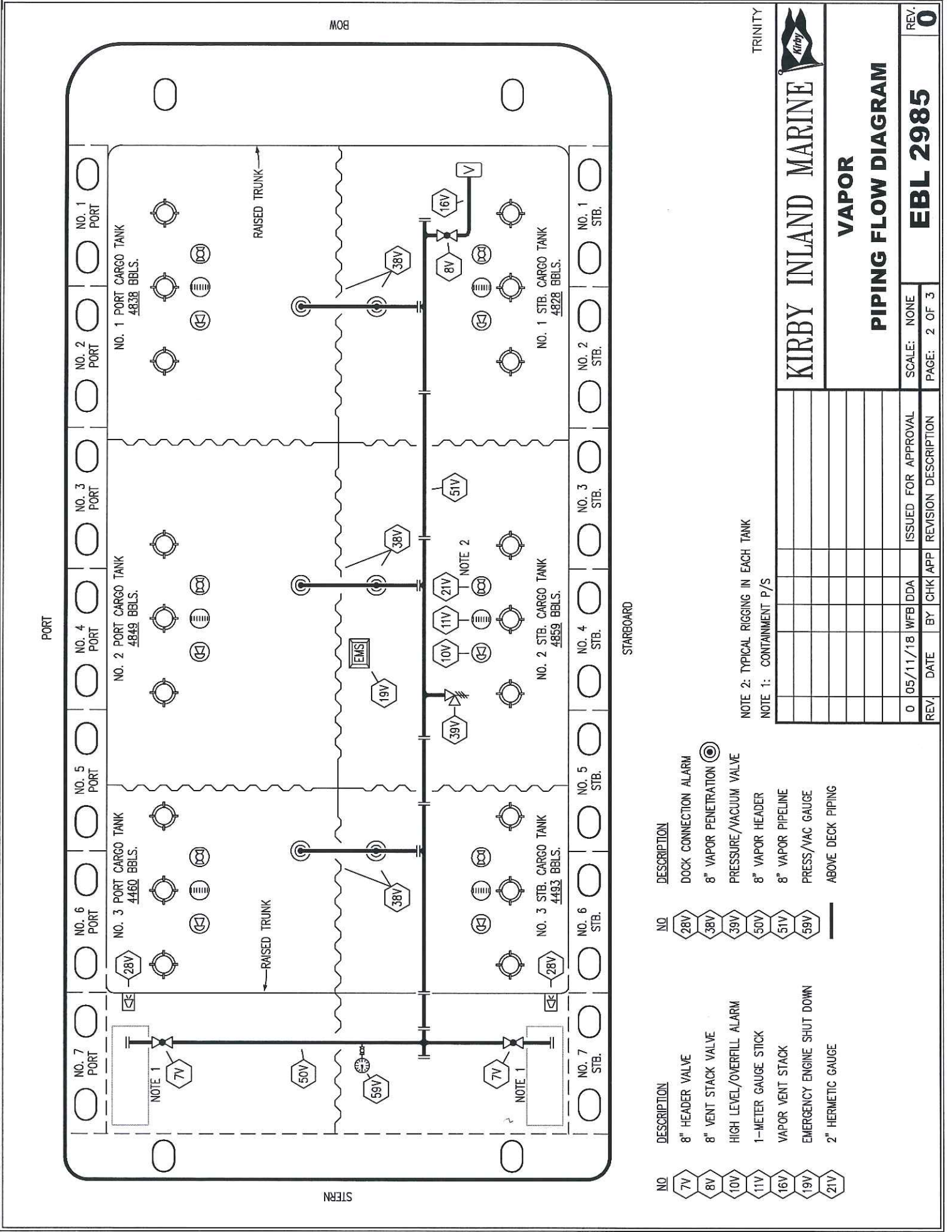
**CARGO**

**PIPING FLOW DIAGRAM**

REV.	0	DATE	05/11/18	BY	WFB	APP	DDA	ISSUED FOR APPROVAL	SCALE:	NONE	PAGE:	1 OF 3
REV.	0	DATE		BY		APP		REVISION DESCRIPTION				

NOTE 1: CONTAINMENT P/S

- |           |                          |
|-----------|--------------------------|
| <b>NO</b> | <b>DESCRIPTION</b>       |
| 1C        | CARGO TANK VALVE         |
| 2C        | LOAD VALVE               |
| 3C        | MASTER SUCTION VALVE     |
| 4C        | DISCHARGE VALVE          |
| 5C        | HEADER VALVE             |
| 8C        | RELIEF VALVE             |
| 9C        | CHECK VALVE              |
| 13C       | CARGO PIPING BLOCK VALVE |
| 19C       | CARGO HEADER             |
| 30C       | CARGO PIPELINE           |
| 31C       | BYPASS VALVE             |
| 36C       | PRESSURE GAUGE           |
| 37C       | CARGO DROP               |
| ---       | ABOVE DECK PIPING        |
| ---       | BELOW DECK PIPING        |



TRINITY



KIRBY INLAND MARINE

**VAPOR**

**PIPING FLOW DIAGRAM**

REV.	0	DATE	05/11/18	BY	WFB/DDA	ISSUED FOR APPROVAL	SCALE:	NONE
				CHK	APP	REVISION DESCRIPTION	PAGE:	2 OF 3

REV. **0**

**EBL 2985**

- |     |                            |     |                       |
|-----|----------------------------|-----|-----------------------|
| NO  | DESCRIPTION                | NO  | DESCRIPTION           |
| 7V  | 8" HEADER VALVE            | 28V | DOCK CONNECTION ALARM |
| 8V  | 8" VENT STACK VALVE        | 38V | 8" VAPOR PENETRATION  |
| 10V | HIGH LEVEL/OVERFILL ALARM  | 39V | PRESSURE/VACUUM VALVE |
| 11V | 1-METER GAUGE STICK        | 50V | 8" VAPOR HEADER       |
| 16V | VAPOR VENT STACK           | 51V | 8" VAPOR PIPELINE     |
| 19V | EMERGENCY ENGINE SHUT DOWN | 59V | PRESS/VAC GAUGE       |
| 21V | 2" HERMETIC GAUGE          |     | ABOVE DECK PIPING     |

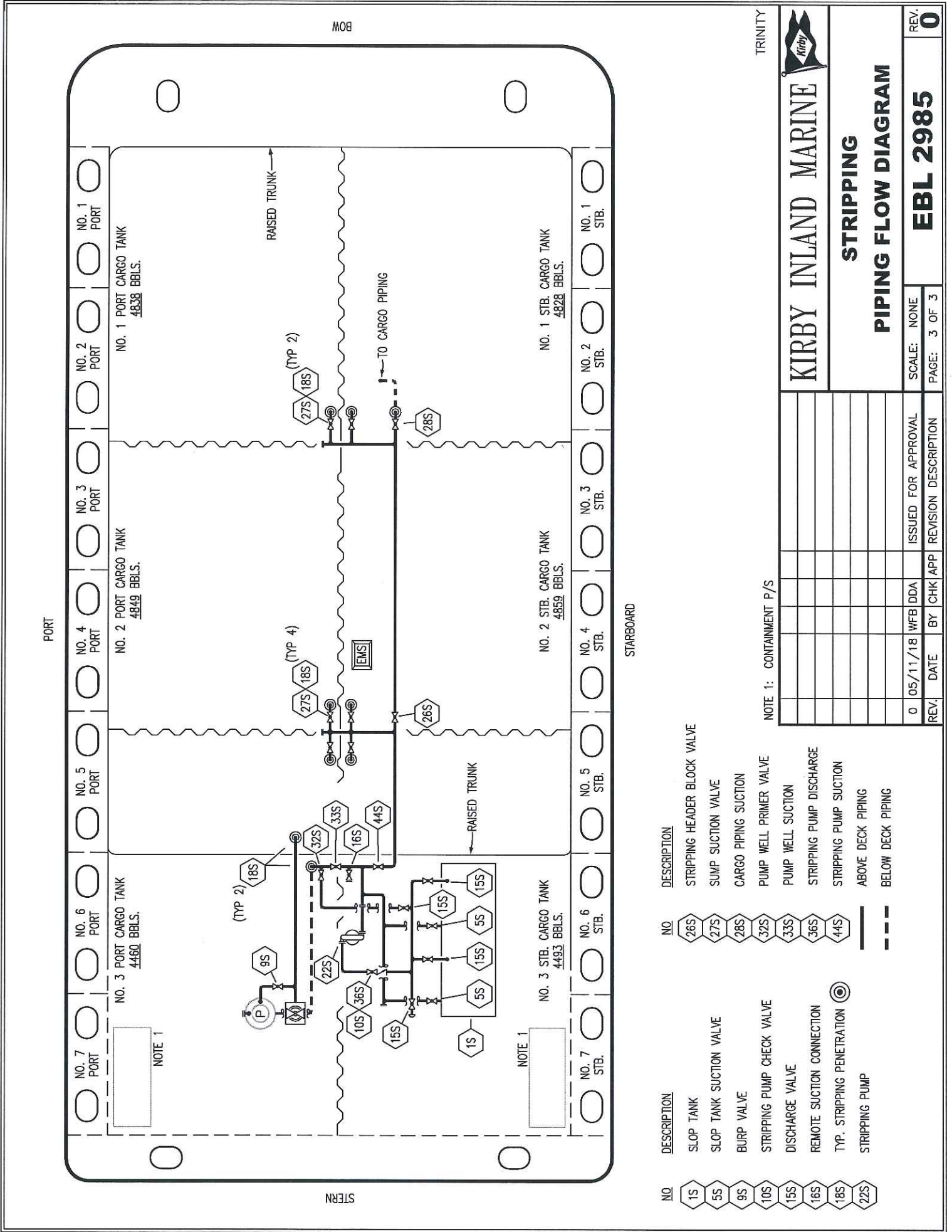
NOTE 2: TYPICAL RIGGING IN EACH TANK  
NOTE 1: CONTAINMENT P/S

PORT

STARBOARD

BOW

STERN



PORT

STARBOARD

BOW

STERN

TRINITY



KIRBY INLAND MARINE

**STRIPPING**

**PIPING FLOW DIAGRAM**

REV. **0**

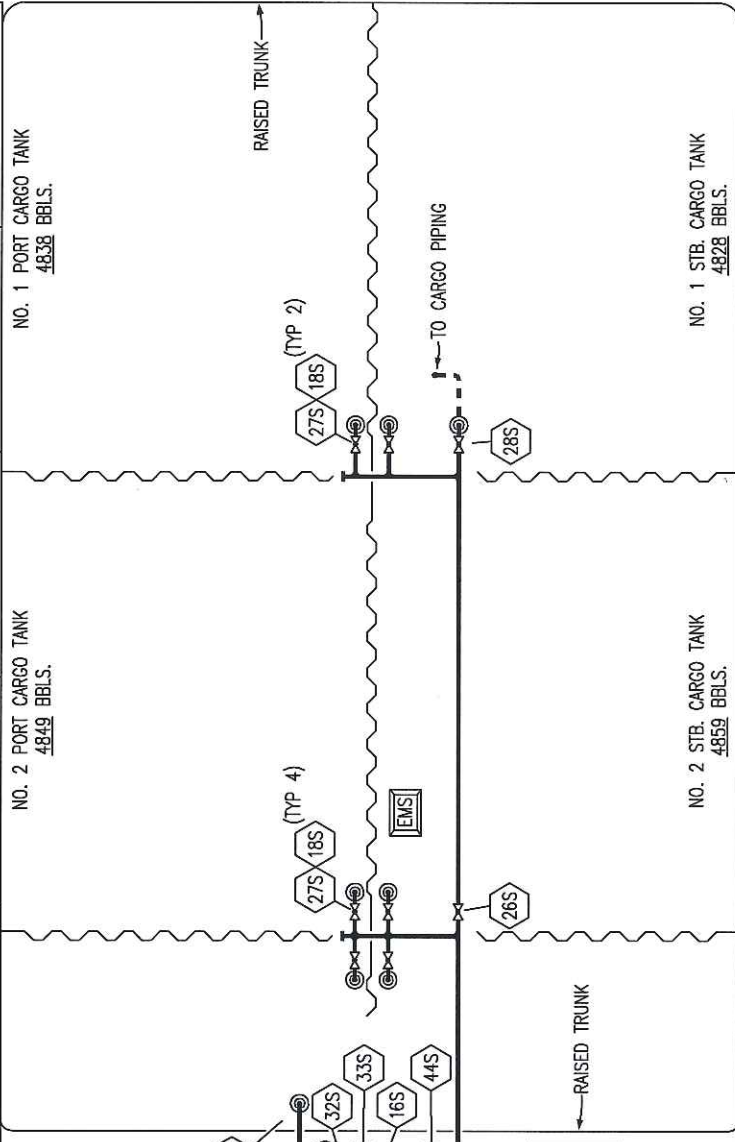
**EBL 2985**

SCALE: NONE  
PAGE: 3 OF 3

NOTE 1: CONTAMNMENT P/S

REV.	DATE	BY	CHK APP	ISSUED FOR APPROVAL	REVISION DESCRIPTION
0	05/11/18	WFB	DDA		

- |         |                            |         |                              |
|---------|----------------------------|---------|------------------------------|
| NO. 1S  | STRIPPING PUMP             | NO. 26S | STRIPPING HEADER BLOCK VALVE |
| NO. 5S  | SLOP TANK                  | NO. 27S | SUMP SUCTION VALVE           |
| NO. 9S  | BURP VALVE                 | NO. 28S | CARGO PIPING SUCTION         |
| NO. 10S | STRIPPING PUMP CHECK VALVE | NO. 32S | PUMP WELL PRIMER VALVE       |
| NO. 15S | DISCHARGE VALVE            | NO. 33S | PUMP WELL SUCTION            |
| NO. 16S | REMOTE SUCTION CONNECTION  | NO. 36S | STRIPPING PUMP DISCHARGE     |
| NO. 18S | TYP. STRIPPING PENETRATION | NO. 44S | STRIPPING PUMP SUCTION       |
| NO. 22S | STRIPPING PUMP             |         | — ABOVE DECK PIPING          |
|         |                            |         | --- BELOW DECK PIPING        |



NO. 7 PORT CARGO TANK 4460 BBL.S.

NO. 6 PORT CARGO TANK 4460 BBL.S.

NO. 5 PORT CARGO TANK 4849 BBL.S.

NO. 4 PORT CARGO TANK 4838 BBL.S.

NO. 3 PORT CARGO TANK 4828 BBL.S.

NO. 2 PORT CARGO TANK 4859 BBL.S.

NO. 1 PORT CARGO TANK 4828 BBL.S.

NO. 7 STB. CARGO TANK 4493 BBL.S.

NO. 6 STB. CARGO TANK 4493 BBL.S.

NO. 5 STB. CARGO TANK 4849 BBL.S.

NO. 4 STB. CARGO TANK 4838 BBL.S.

NO. 3 STB. CARGO TANK 4828 BBL.S.

NO. 2 STB. CARGO TANK 4859 BBL.S.

NO. 1 STB. CARGO TANK 4828 BBL.S.

NOTE 1

NOTE 1