

INGALLS IRON - EX: N/A



KIRBY INLAND MARINE

CARGO PIPING FLOW DIAGRAM

REV.	DATE	BY	CHK/APP	REVISION DESCRIPTION
1	08/12/13	DCB	DDA	REVISED HEADER
D	01/08/10	RB	OF	APPROVED

SCALE: NONE
PAGE: 1 OF 2

USL 147
REV. 1

NOTE 1: P/V VALVES VENTED TO ATMOSPHERE
NOTE 2: 2" CONDUIT BELOW GRATE FOR EMS.

STARBOARD

- NO. 1C 4" CARGO TANK VALVE
 - NO. 5C 6" HEADER VALVE
 - NO. 8C 3 RELIEF VALVE/4" STACK
 - NO. 19C 6" CARGO HEADER
 - NO. 26C DRAIN (BLEED) VALVE
 - NO. 30C 4" CARGO PIPELINE
 - NO. 37C 4" CARGO DROP
 - NO. (A) AIR ACTUATED AUTOMATIC VALVE
- ABOVE DECK PIPING

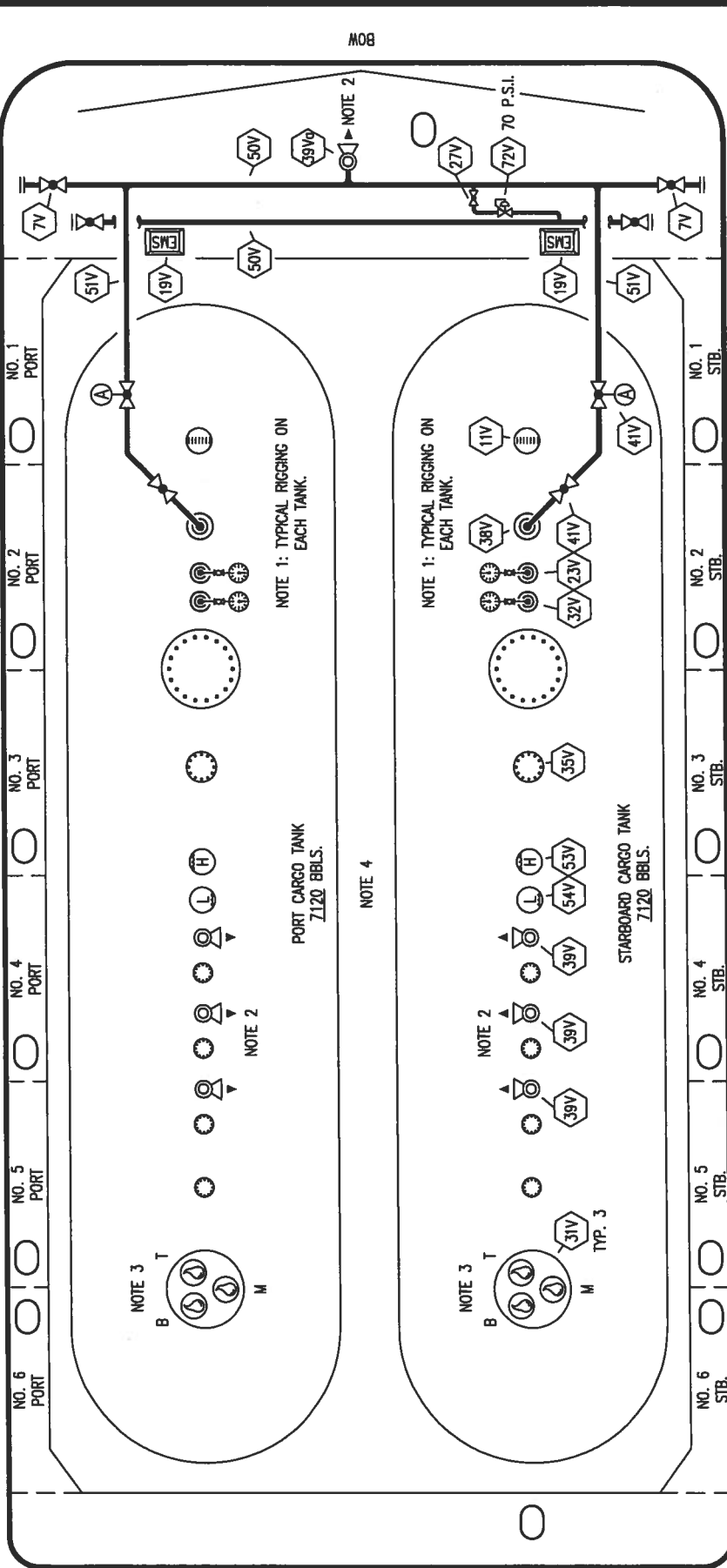
DESCRIPTION

STERN

PORT

BOW

PORT



STEM

INGALLS IRON - EX: N/A

KIRBY INLAND MARINE

VAPOR

PIPING FLOW DIAGRAM

SCALE: NONE
PAGE: 2 OF 2

REV. 1

NO	DESCRIPTION	NO	DESCRIPTION
7V	4" HEADER VALVE	50V	4" VAPOR HEADER
11V	GAUGE STICK (MIDDLE)	51V	3" VAPOR PIPELINE
19V	EMERGENCY SHUT DOWN STATIONS VALVE	53V	HIGH LEVEL GAUGE
27V	SAMPLE STATIONS	54V	LOW LEVEL GAUGE
31V	TEMPERATURE GAUGE 0-160 F	72V	VAPOR DISCHARGE REGULATOR
32V	VAPOR DROP OR PENETRATION		ABOVE DECK PIPING
38V	PRESSURE/VACUUM VALVE @ 260 PSI		AIR ACTUATED VALVE
39V	4" STACK-3 PRESSURE/VACUUM VALVE		
39Vq	3" VAPOR TANK VALVE		
41V			

REV.	DATE	BY	CHK/APP	REVISION DESCRIPTION
1				REVISED HEADERS
0	08/12/13	DCGB	DDA	APPROVED
0	01/08/10	RB	BR	OF

- NOTE 1: TYPICAL RIGGING ON EACH TANK
- NOTE 2: P/V VALVES VENTED TO ATMOSPHERE
- NOTE 3: SAMPLES - T=TOP, M=MIDDLE, B=BOTTOM
- NOTE 4: 2" CONDUIT BELOW GRATE FOR EMS.