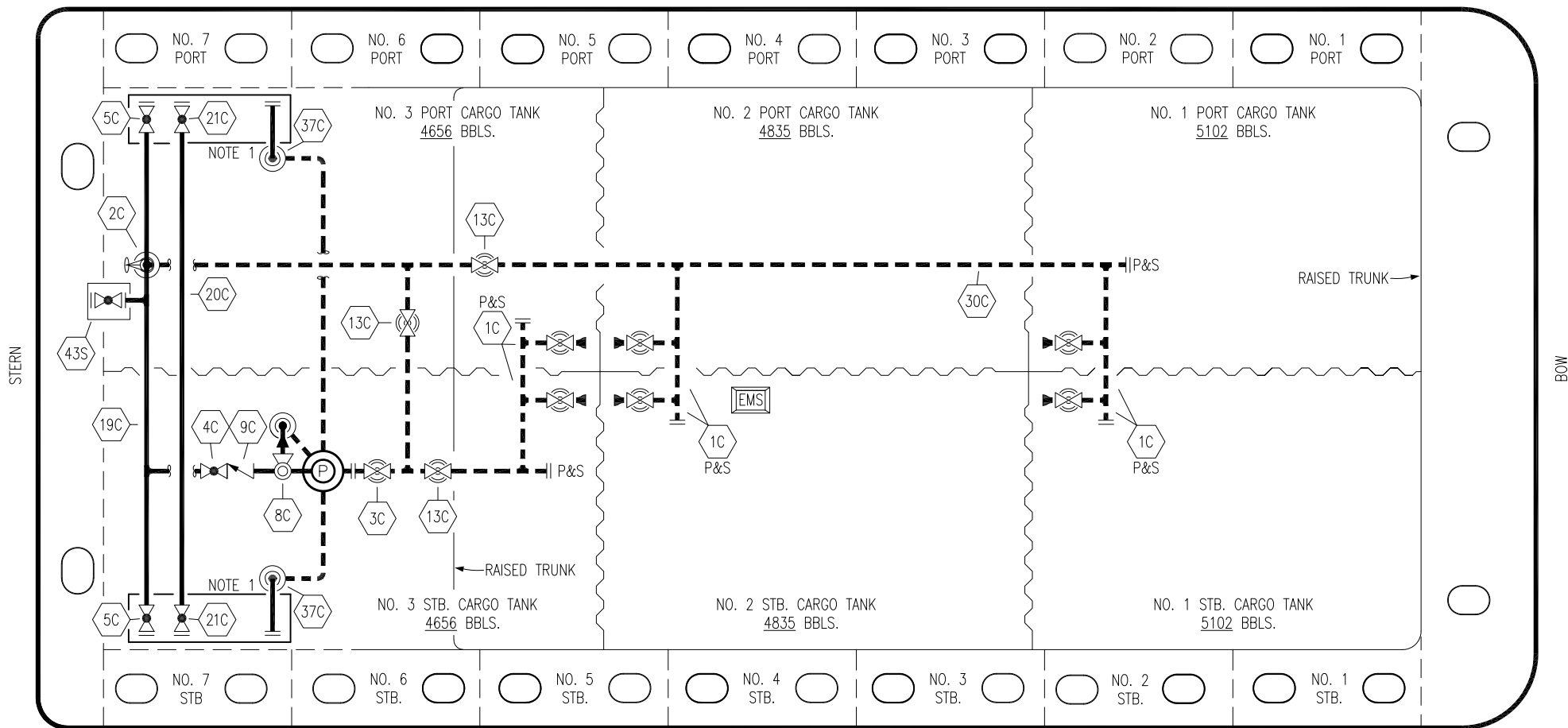


PORT



STARBOARD

- | | | | |
|-----|--------------------------|-----|---------------------|
| NO | DESCRIPTION | NO | DESCRIPTION |
| 1C | CARGO TANK VALVE | 20C | DUMMY HEADER PIPING |
| 2C | LOAD VALVE | 21C | DUMMY HEADER VALVE |
| 3C | MASTER SUCTION VALVE | 30C | CARGO PIPELINE |
| 4C | DISCHARGE VALVE | 37C | CARGO DROP |
| 5C | HEADER VALVE | 43S | STERN HEADER VALVE |
| 8C | RELIEF VALVE | | ABOVE DECK PIPING |
| 9C | CHECK VALVE | | BELOW DECK PIPING |
| 13C | CARGO PIPING BLOCK VALVE | | |
| 19C | CARGO HEADER | | |

NOTE 1: CONTAINMENT P/S

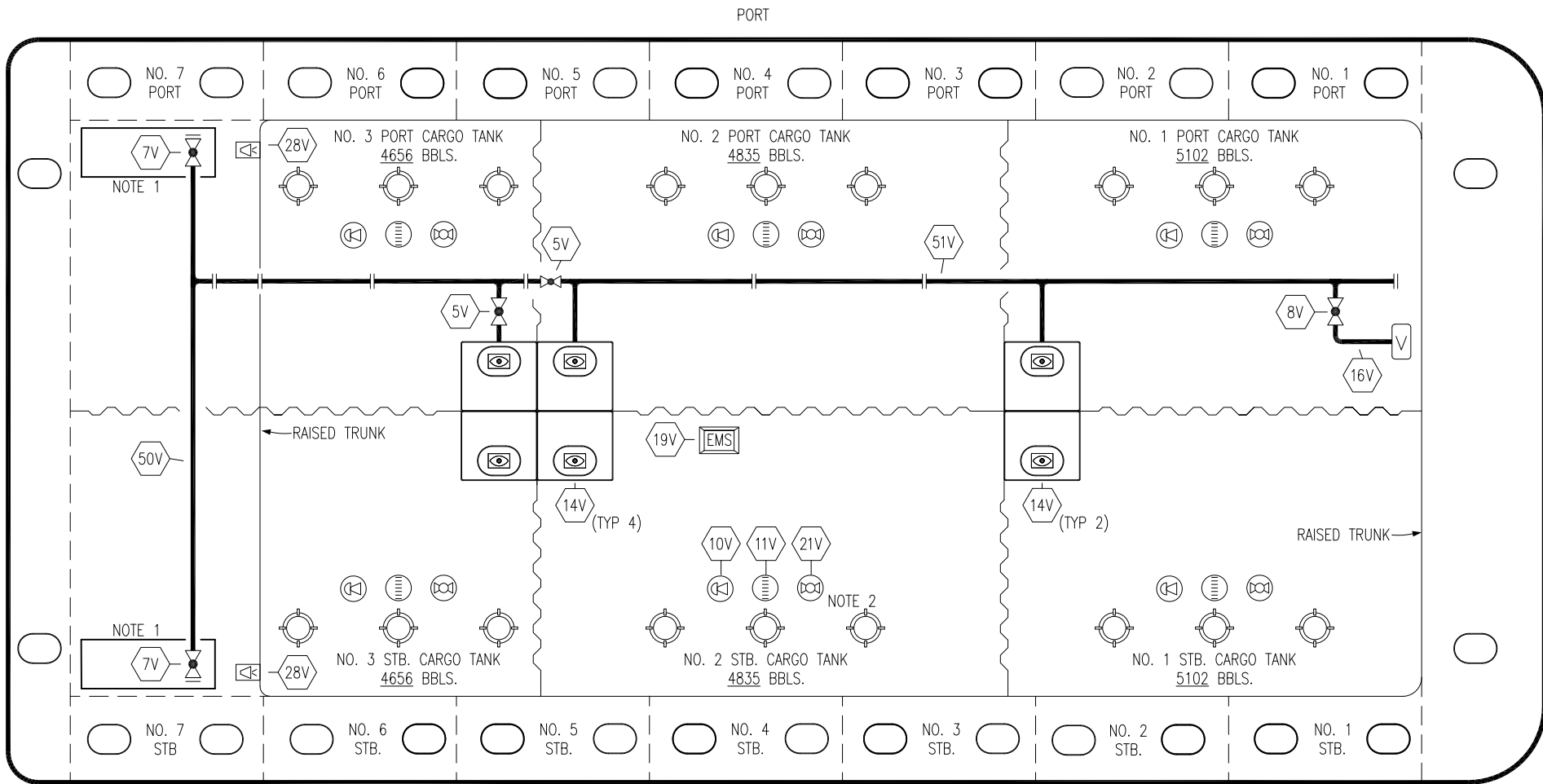
0	09/11/19	NRB	DDA	ISSUED FOR APPROVAL
REV.	DATE	BY	CHK	APP
				REVISION DESCRIPTION

TRINITY

KIRBY INLAND MARINE

**CARGO
PIPING FLOW DIAGRAM**

SCALE: NONE	KIRBY 27017	REV. 0
PAGE: 1 OF 2		



- NO 5V BLOCK VALVE
- NO 7V HEADER VALVE
- NO 8V VENT STACK VALVE
- NO 10V HIGH LEVEL/OVERFILL ALARM
- NO 11V 1-METER GAUGE STICK
- NO 14V SIGHT GLASS
- NO 16V VAPOR VENT STACK

- NO 19V EMERGENCY ENGINE SHUT DOWN
- NO 21V HERMETIC GAUGE
- NO 28V DOCK CONNECTION ALARM
- NO 50V VAPOR HEADER
- NO 51V VAPOR PIPELINE
- ABOVE DECK PIPING

NOTE 2: TYPICAL RIGGING IN EACH TANK

NOTE 1: CONTAINMENT P/S

REV.	DATE	BY	CHK	APP	REVISION DESCRIPTION
0	09/11/19	NRB	DDA		ISSUED FOR APPROVAL

TRINITY

KIRBY INLAND MARINE

VAPOR PIPING FLOW DIAGRAM

KIRBY 27017

SCALE: NONE	REV. 0
PAGE: 2 OF 2	