

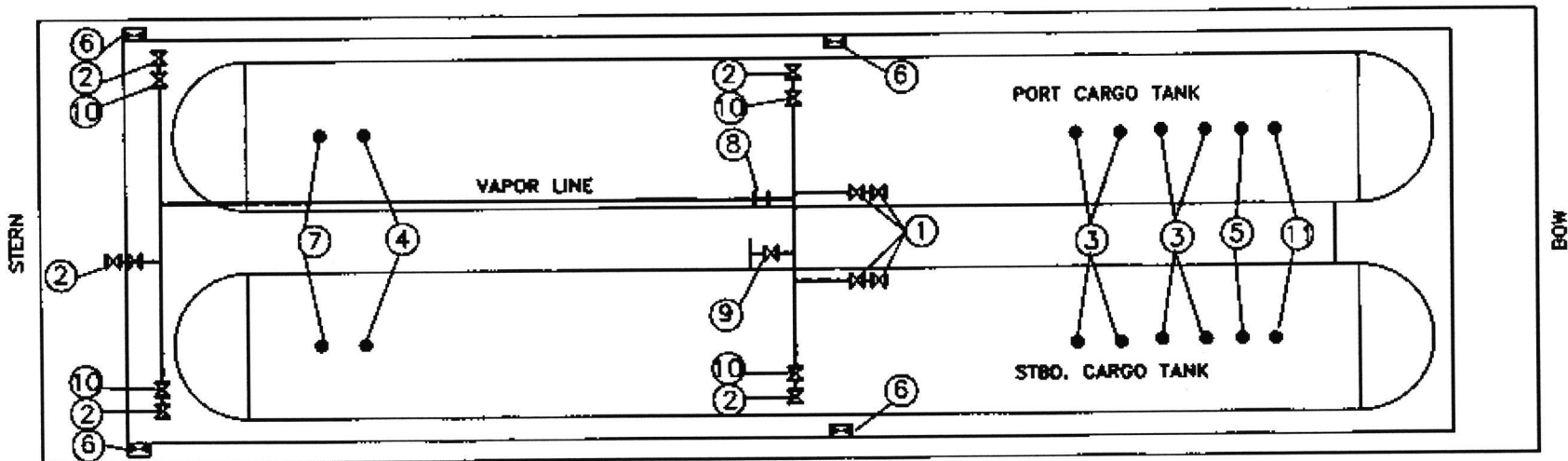
**LEGEND**

- | NO | DESCRIPTION                    |
|----|--------------------------------|
| 1  | TANK VALVE                     |
| 2  | MANUAL HEADER VALVE            |
| 3  | HEADER BLOCK VALVE             |
| 4  | CROSSOVER VALVE                |
| 5  | THERMOMETER AND PRESSURE GAUGE |
| 6  | GAUGE STICKS LOW - MED - HIGH  |
| 7  | BERGAN DFG                     |
| 8  | AIR ACTUATED HEADER VALVE      |
| 9  | EMERGENCY SHUTDOWN             |

**CARGO PIPING  
DIAGRAM**

**DBL 703**

Effective Date:	Revision No.	Page
02/22/13	0	1 of 2



LEGEND

- | NO | DESCRIPTION   |
|----|---|
| 1  | TANK VALVE  |
| 2  | VENT HEADER VALVE (LINE BLOCK VALVE)                                |
| 3  | SAFETY RELIEF VALVE   |
| 4  | NITROGEN PURGE VALVE  |
| 5  | SLIP TUBE   |
| 6  | AIR OPERATED REMOTE CONTROLLED QUICK CLOSING EMERGENCY STATION NOZ. |
| 7  | NOZ.  |
| 8  | SPACER  |
| 9  | CROSSOVER VALVE   |
| 10 | AIR ACTUATED HEADER VALVE   |
| 11 | BERGAN DFG  |

VAPOR PIPING, GAUGING  
AND OVERFILL  
PROTECTION

DBL 703

Effective Date:	Revision No.	Page
02/22/13	0	2 of 2