

NO	DESCRIPTION	NO	DESCRIPTION
1C	CARGO TANK VALVE	19C	CARGO HEADER
2C	LOAD VALVE	20C	DUMMY HEADER PIPING
3C	MASTER SUCTION VALVE	21C	DUMMY HEADER VALVE
4C	DISCHARGE VALVE	30C	CARGO PIPELINE
5C	HEADER VALVE	37C	CARGO DROP
8C	RELIEF VALVE	43S	STERN HEADER VALVE
9C	CHECK VALVE	—	— ABOVE DECK PIPING
13C	CARGO PIPING BLOCK VALVE	- - -	BELOW DECK PIPING

NOTE 1: CONTAINMENT P/S

REV.	DATE	BY	CHK	APP	REVISION DESCRIPTION
0	02/20/19	MRV	DDA		ISSUED FOR APPROVAL

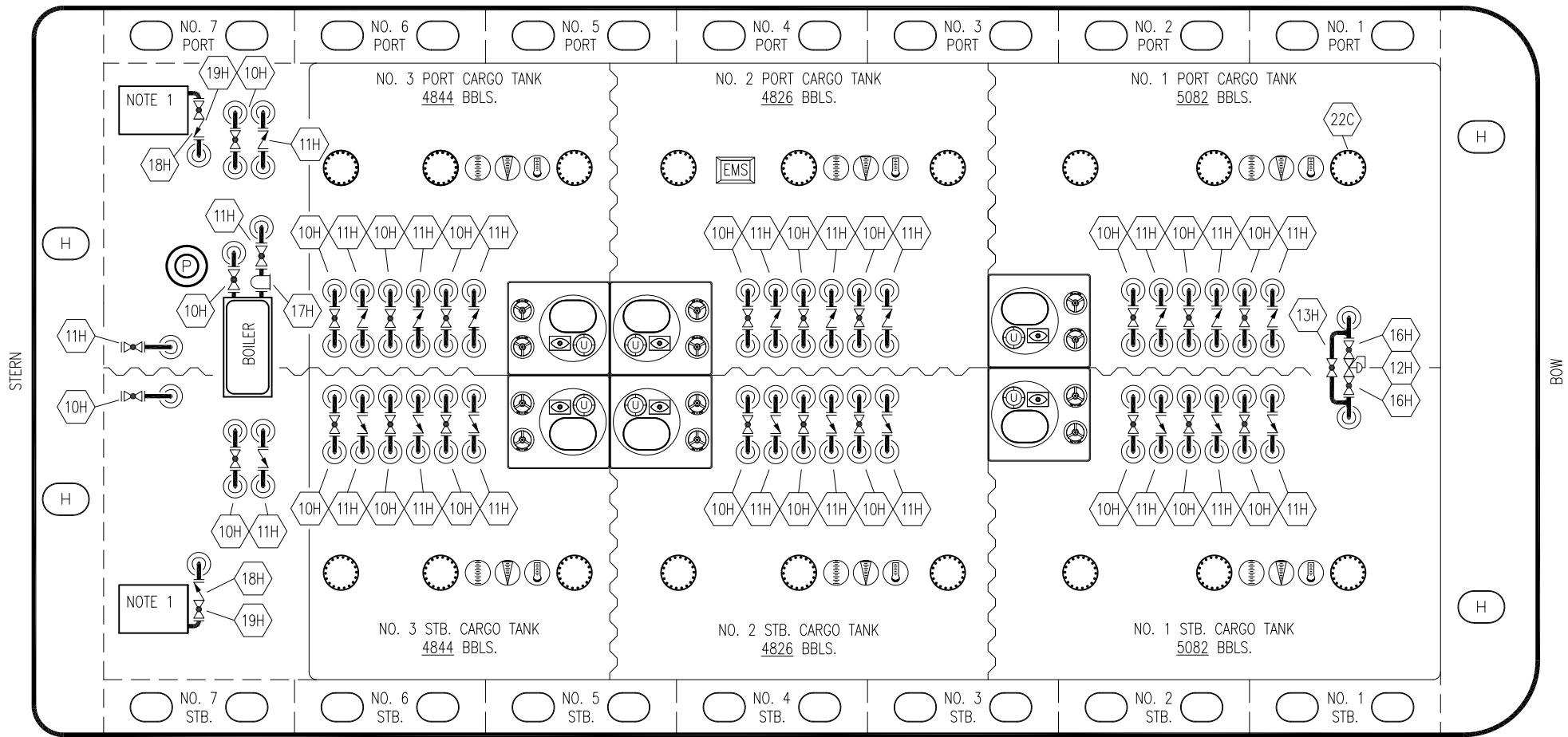
TRINITY

**KIRBY INLAND MARINE**

**CARGO  
PIPING FLOW DIAGRAM**

**CTCO 343**

SCALE: NONE	REV. 0
PAGE: 1 OF 3	



STERN

BOW

- | NO  | DESCRIPTION          |
|-----|----------------------|
| 10H | SUPPLY VALVE         |
| 11H | RETURN               |
| 12H | PRESSURE REGULATOR   |
| 13H | BY-PASS              |
| 16H | ISOLATION VALVE      |
| 17H | BASKET STRAINER      |
| 18H | CHECK VALVE          |
| 19H | DRIP PAN DRAIN VALVE |
- ABOVE DECK PIPING

NOTE 1: 6 BARREL DRIP PAN

TRINITY

KIRBY INLAND MARINE

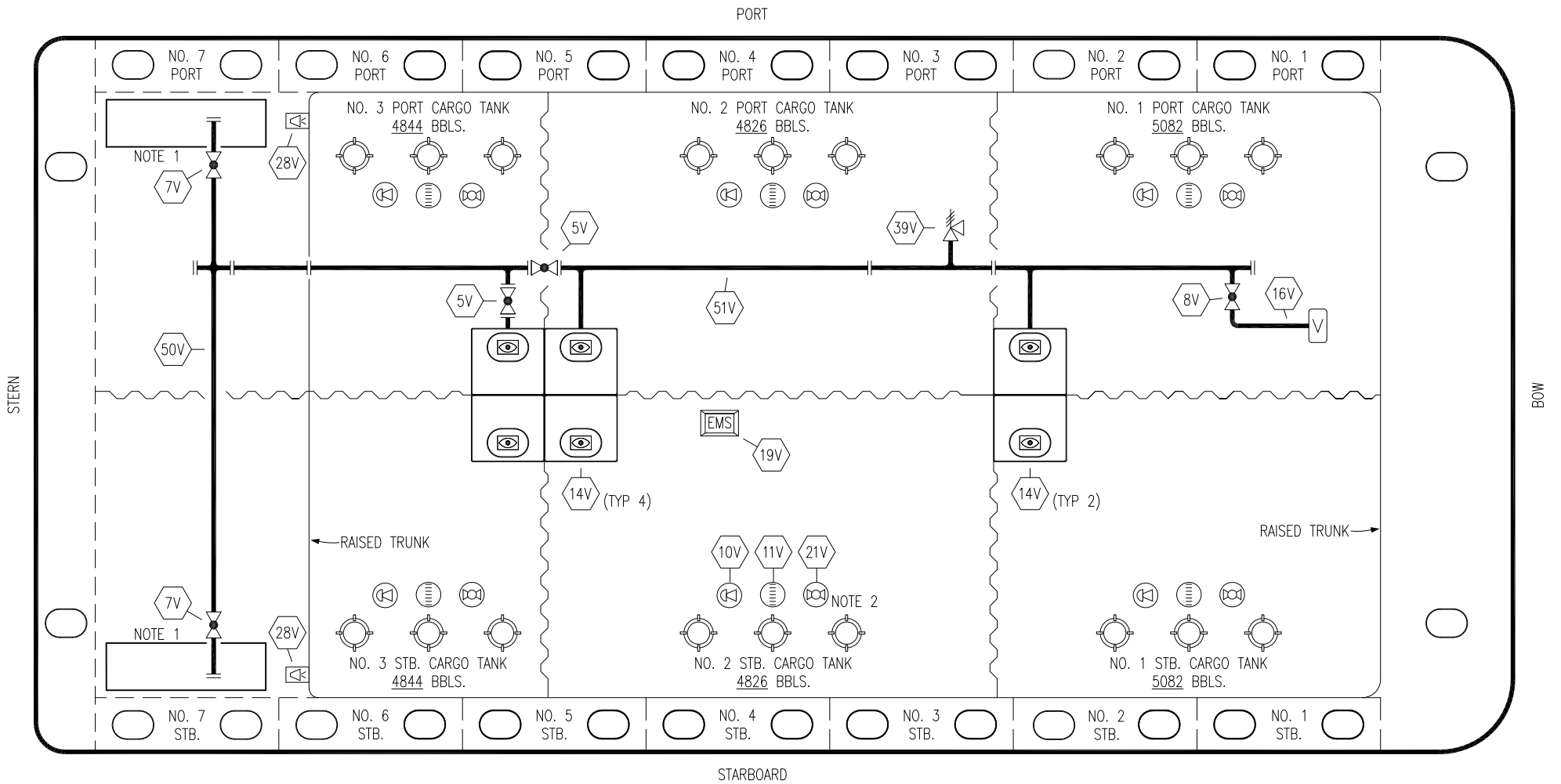
**HOT OIL  
PIPING FLOW DIAGRAM**

0	02/20/19	MRV	DDA	ISSUED FOR APPROVAL	
REV.	DATE	BY	CHK	APP	REVISION DESCRIPTION

SCALE: NONE  
PAGE: 2 of 3

**CTCO 343**

REV. **0**



- |     |                           |
|-----|---------------------------|
| NO  | DESCRIPTION               |
| 5V  | BLOCK VALVE               |
| 7V  | HEADER VALVE              |
| 8V  | VENT STACK VALVE          |
| 10V | HIGH LEVEL/OVERFILL ALARM |
| 11V | 1-METER GAUGE STICK       |
| 14V | SIGHT GLASS               |
| 16V | VAPOR VENT STACK          |

- |          |                            |
|----------|----------------------------|
| NO       | DESCRIPTION                |
| 19V      | EMERGENCY ENGINE SHUT DOWN |
| 21V      | HERMETIC GAUGE             |
| 28V      | DOCK CONNECTION ALARM      |
| 50V      | VAPOR HEADER               |
| 51V      | VAPOR PIPELINE             |
| <b>—</b> | ABOVE DECK PIPING          |

NOTE 2: TYPICAL RIGGING IN EACH TANK  
 NOTE 1: CONTAINMENT P/S

0	02/20/19	MRV	DDA	ISSUED FOR APPROVAL
REV.	DATE	BY	CHK	APP
				REVISION DESCRIPTION

TRINITY

**KIRBY INLAND MARINE**

**VAPOR  
PIPING FLOW DIAGRAM**

SCALE: NONE	<b>CTCO 343</b>
PAGE: 3 OF 3	

REV. **0**