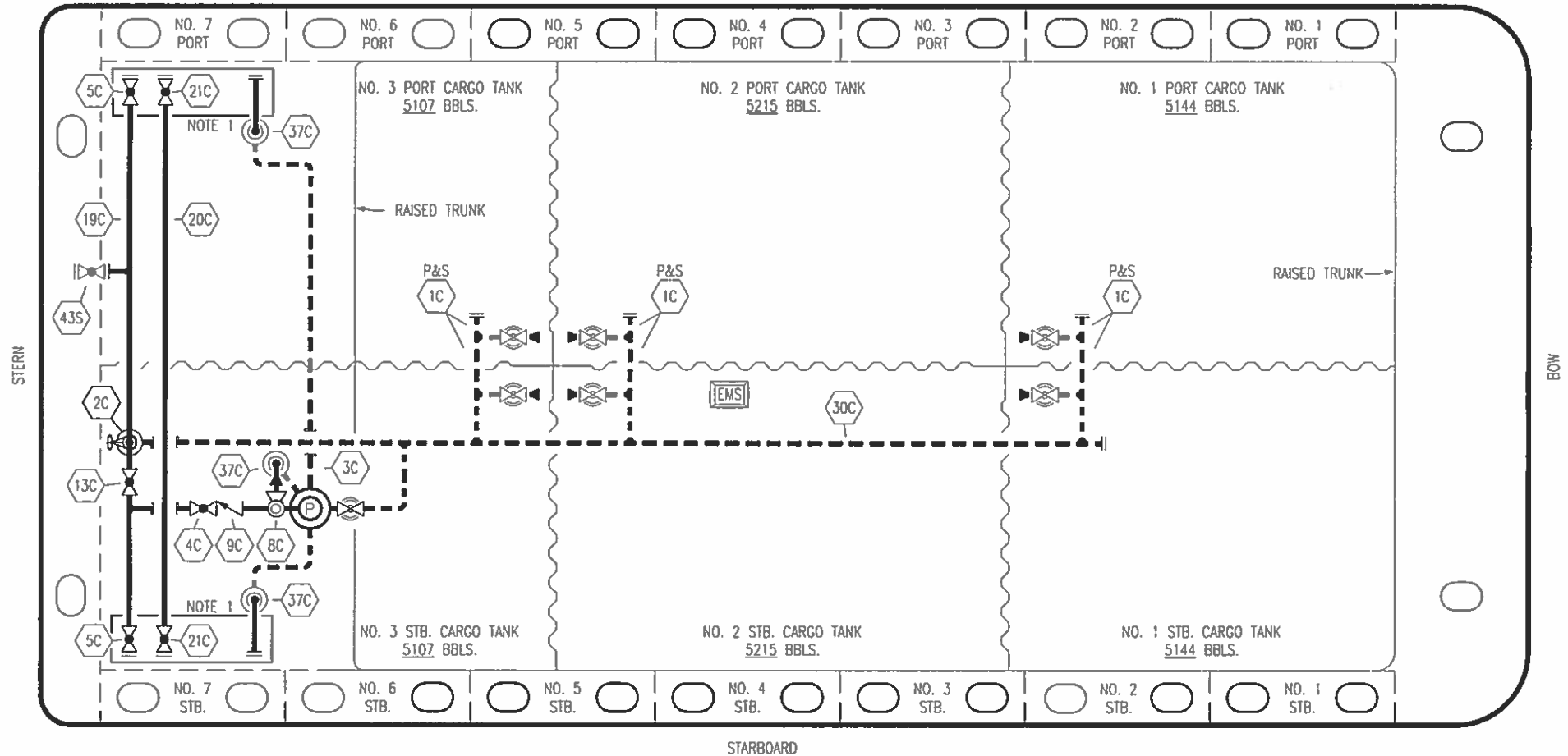





PORT



STARBOARD

NO	DESCRIPTION	NO	DESCRIPTION
1C	CARGO TANK VALVE	13C	CARGO PIPING BLOCK VALVE
2C	LOAD VALVE	19C	CARGO HEADER
3C	MASTER SUCTION VALVE	20C	DUMMY HEADER PIPING
4C	DISCHARGE VALVE	21C	DUMMY HEADER VALVE
5C	HEADER VALVE	30C	CARGO PIPELINE
8C	RELIEF VALVE	37C	CARGO DROP 
9C	CHECK VALVE		ABOVE DECK PIPING
			BELOW DECK PIPING

NOTE 1: CONTAINMENT P/S

CONRAD

0	02/15/19	MRV	DDA		ISSUED FOR APPROVAL
REV.	DATE	BY	CHK	APP	REVISION DESCRIPTION

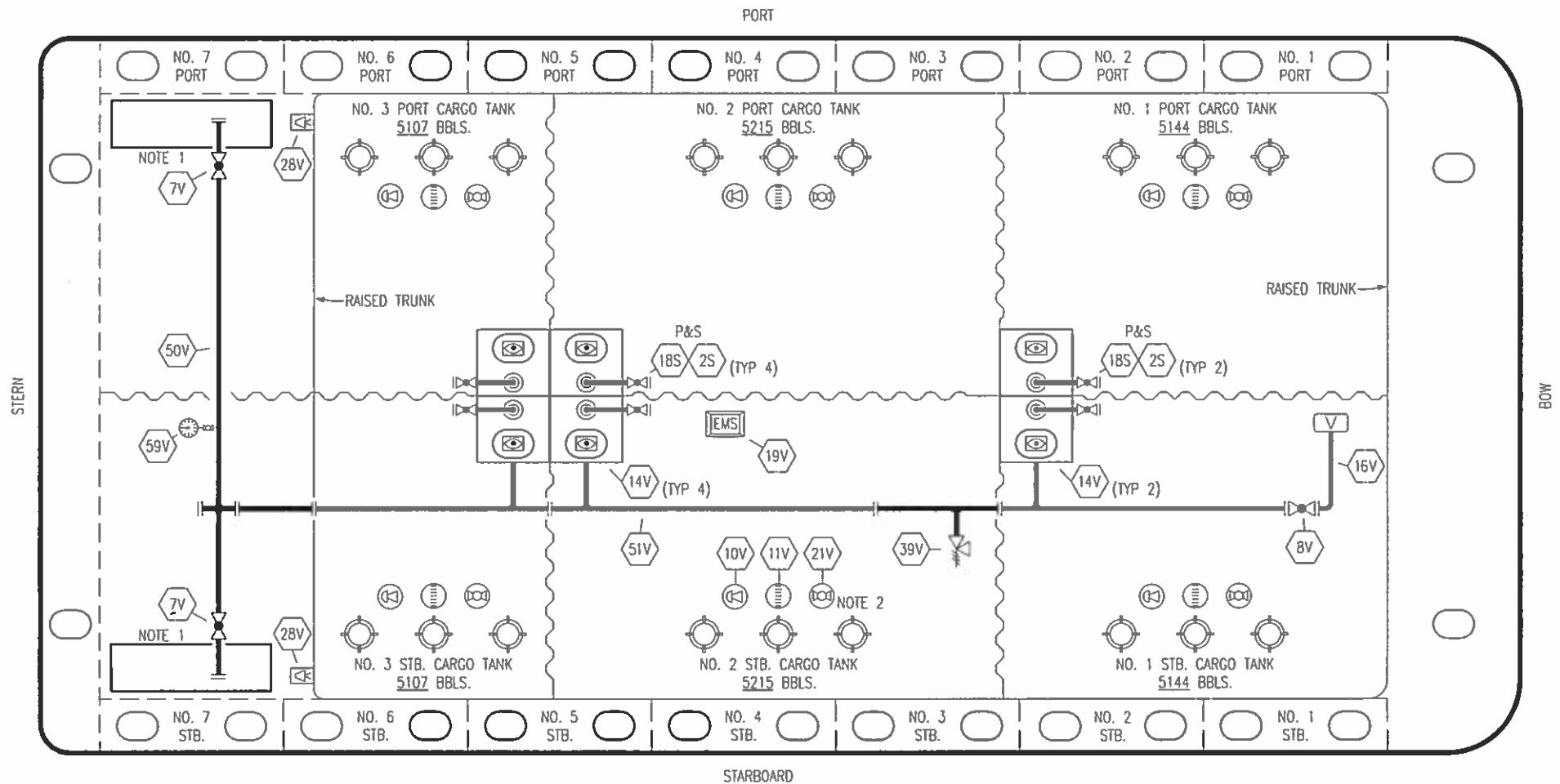
KIRBY INLAND MARINE 

**CARGO
PIPING FLOW DIAGRAM**

SCALE: NONE
PAGE: 1 OF 2

CTCO 252

REV. **0**



NO	DESCRIPTION	NO	DESCRIPTION
7V	HEADER VALVE	28V	DOCK CONNECTION ALARM
8V	VENT STACK VALVE	50V	VAPOR HEADER
10V	HIGH LEVEL/OVERFILL ALARM	51V	VAPOR PIPELINE
11V	1--METER GAUGE STICK	59V	PRESS/VAC GAUGE
14V	SIGHT GLASS	2S	CARGO SUMP SUCTION VALVE
19V	EMERGENCY ENGINE SHUT DOWN	18S	STRIPPING DROP
21V	HERMETIC GAUGE	—	ABOVE DECK PIPING

NOTE 2: TYPICAL RIGGING IN EACH TANK

NOTE 1: CONTAINMENT P/S

CONRAD

REV.	DATE	BY	CHK	APP	REVISION DESCRIPTION
0	02/15/18	MRV	DDA		ISSUED FOR APPROVAL

KIRBY INLAND MARINE 

**VAPOR
PIPING FLOW DIAGRAM**

SCALE: NONE

PAGE: 2 OF 2

CTCO 252

REV. **0**