

MOB

PORT

NO. 6 PORT NO. 5 PORT NO. 4 PORT NO. 3 PORT NO. 2 PORT NO. 1 PORT

PORT CARGO TANK  
7120 BBLs.

NOTE 2

STARBOARD CARGO TANK  
7120 BBLs.

NO. 6 STB. NO. 5 STB. NO. 4 STB. NO. 3 STB. NO. 2 STB. NO. 1 STB.

STARBOARD

STERN

INGALLS IRON - EX: N/A



KIRBY INLAND MARINE

CARGO

PIPING FLOW DIAGRAM

NOTE 1: P/V VALVES VENTED TO ATMOSPHERE  
NOTE 2: 2" CONDUIT BELOW GRADE FOR EMS.

- NO. 1C 4" CARGO TANK VALVE
- NO. 5C 6" HEADER VALVE
- NO. 8C 3 RELIEF VALVE/4" STACK
- NO. 11C BLEED OFF VALVE
- NO. 19C 6" CARGO HEADER
- NO. 26C DRAIN (BLEED) VALVE
- NO. 30C 4" CARGO PIPELINE
- NO. 36C 0-300# PRESSURE GAUGE
- NO. 37C 4" CARGO DROP
- NO. (A) AIR ACTUATED AUTOMATIC VALVE ABOVE DECK PIPING

REV.	DATE	BY	CHK	APP	REVISION DESCRIPTION	SCALE:	ISSUED FOR APPROVAL	PAGE:	REV.
0	10/11/11	JN	DDA		ISSUED FOR APPROVAL	NONE		1 OF 3	0

CC 134

INGALLS IRON - EX: N/A

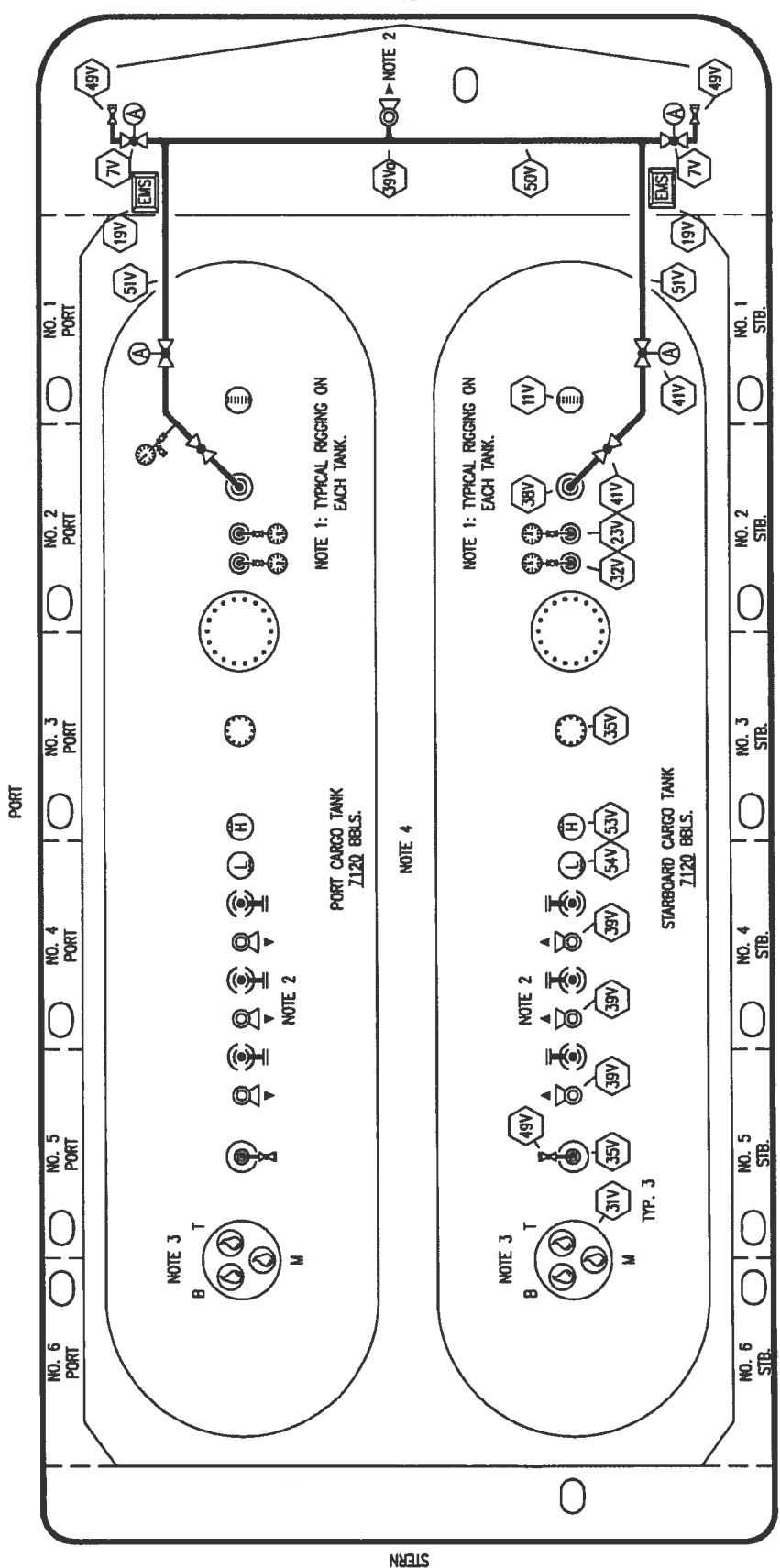
**KIRBY INLAND MARINE**

**VAPOR**

**PIPING FLOW DIAGRAM**

**CC 134**

SCALE: NONE  
PAGE: 2 OF 3  
REV. 0



NO.	DESCRIPTION
7V	4" HEADER VALVE
11V	GAUGE STICK (MIDDLE)
19V	EMERGENCY SHUT DOWN STATIONS
23V	PRESSURE GAUGE 0-300#
31V	SAMPLE STATIONS
32V	TEMPERATURE GAUGE 0-160 F
35V	12" NOZZLE W/ 2" BLIND
38V	VAPOR DROP OR PENETRATION
39V	PRESSURE/VACUUM VALVE @ 260 PSI
39Vb	4" STACK-3 PRESSURE/VACUUM VALVE
41V	3" VAPOR TANK VALVE
49V	BLEED VALVE
50V	4" VAPOR HEADER
51V	3" VAPOR PIPELINE
53V	HIGH LEVEL GAUGE
54V	LOW LEVEL GAUGE
	ABOVE DECK PIPING
	AIR ACTUATED AUTOMATIC VALVE

REV.	DATE	BY	CHK APP	REVISION DESCRIPTION
0	10/11/11	JN	DDA	ISSUED FOR APPROVAL

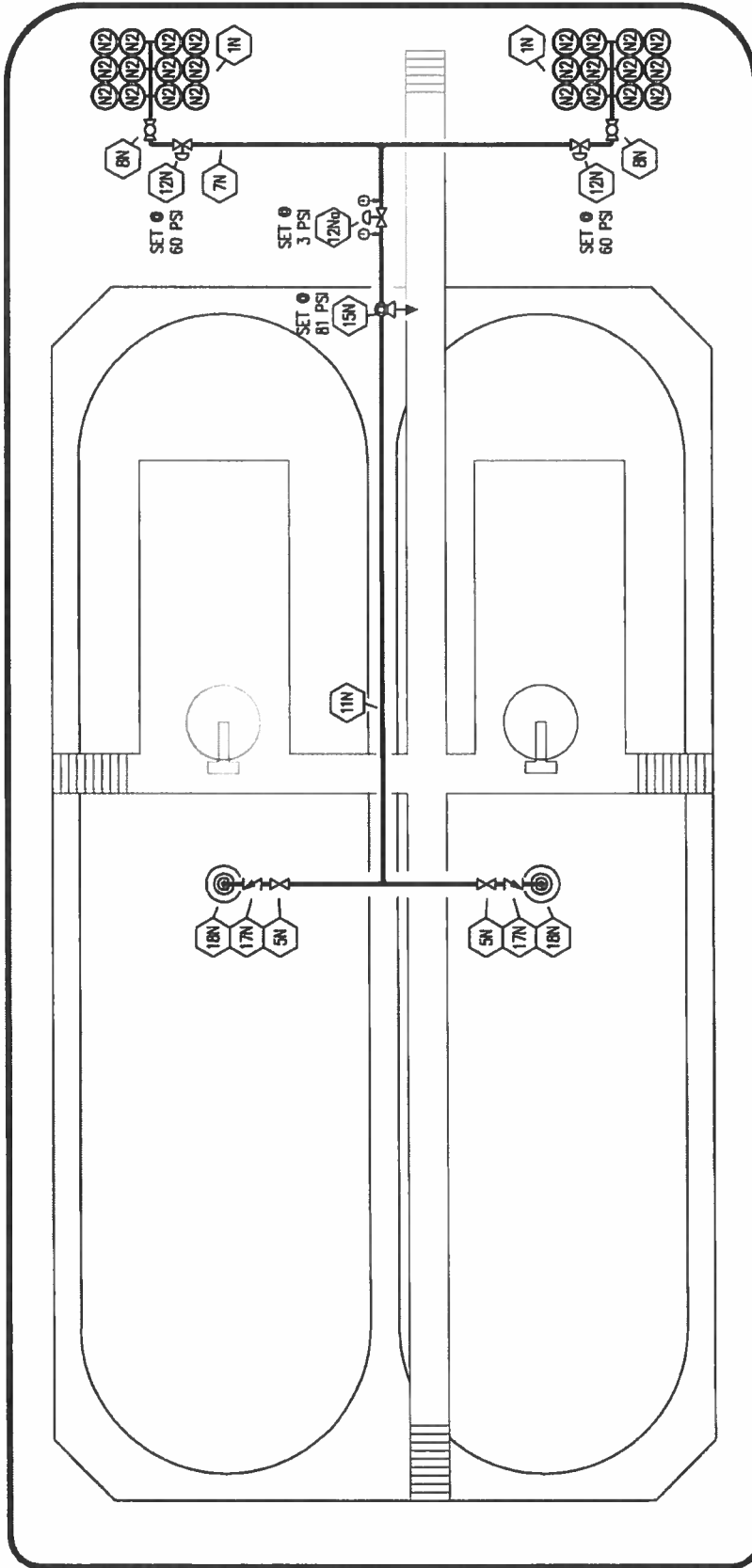
NOTE 1: TYPICAL RIGGING ON EACH TANK

NOTE 2: P/V VALVES VENTED TO ATMOSPHERE

NOTE 3: SAMPLES - T=TOP, M=MIDDLE, B=BOTTOM

NOTE 4: 2" CONDUIT BELOW GRATE FOR EMS.

PORT



BOW

STERN

STARBOARD

- NO** DESCRIPTION
- 1N NITROGEN BOTTLE RACK (12 PK.)
  - 5N N2 SUPPLY VALVE
  - 7N NITROGEN HEADER
  - 8N N2 REGULATOR CONTROL VALVE
  - 11N NITROGEN PIPELINE
  - 12N HARRIS NITROGEN REGULATOR
  - 12Np FISHER NITROGEN REGULATOR
  - 15N N2 RELIEF VALVE
  - 17N N2 CHECK VALVE
  - 18N N2 TANK PENETRATION
- ABOVE DECK PIPING



KIRBY INLAND MARINE

**NITROGEN  
PIPING FLOW DIAGRAM**

REV.	DATE	BY	CHK/APP	ISSUED FOR APPROVAL	SCALE:	REV.
0	10/11/11	JN	DDA		NONE	0
					PAGE: 3 OF 3	

CC 134