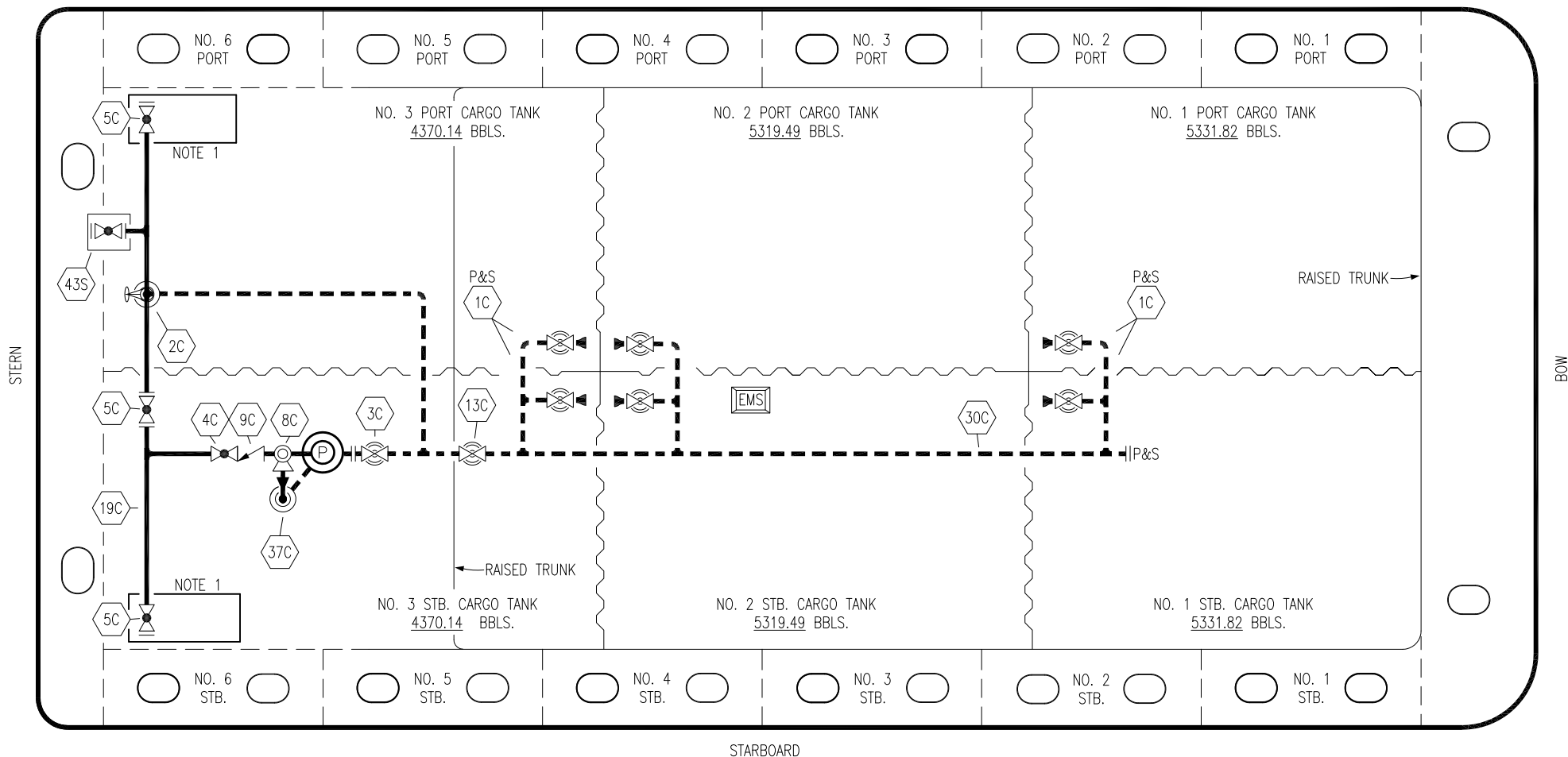


PORT



- | | | | |
|----|----------------------|-----|--------------------------|
| NO | DESCRIPTION | NO | DESCRIPTION |
| 1C | CARGO TANK VALVE | 13C | CARGO PIPING BLOCK VALVE |
| 2C | LOAD VALVE | 19C | CARGO HEADER |
| 3C | MASTER SUCTION VALVE | 30C | CARGO PIPELINE |
| 4C | DISCHARGE VALVE | 37C | CARGO DROP |
| 5C | HEADER VALVE | 43S | STERN HEADER VALVE |
| 8C | RELIEF VALVE | — | — ABOVE DECK PIPING |
| 9C | CHECK VALVE | --- | --- BELOW DECK PIPING |

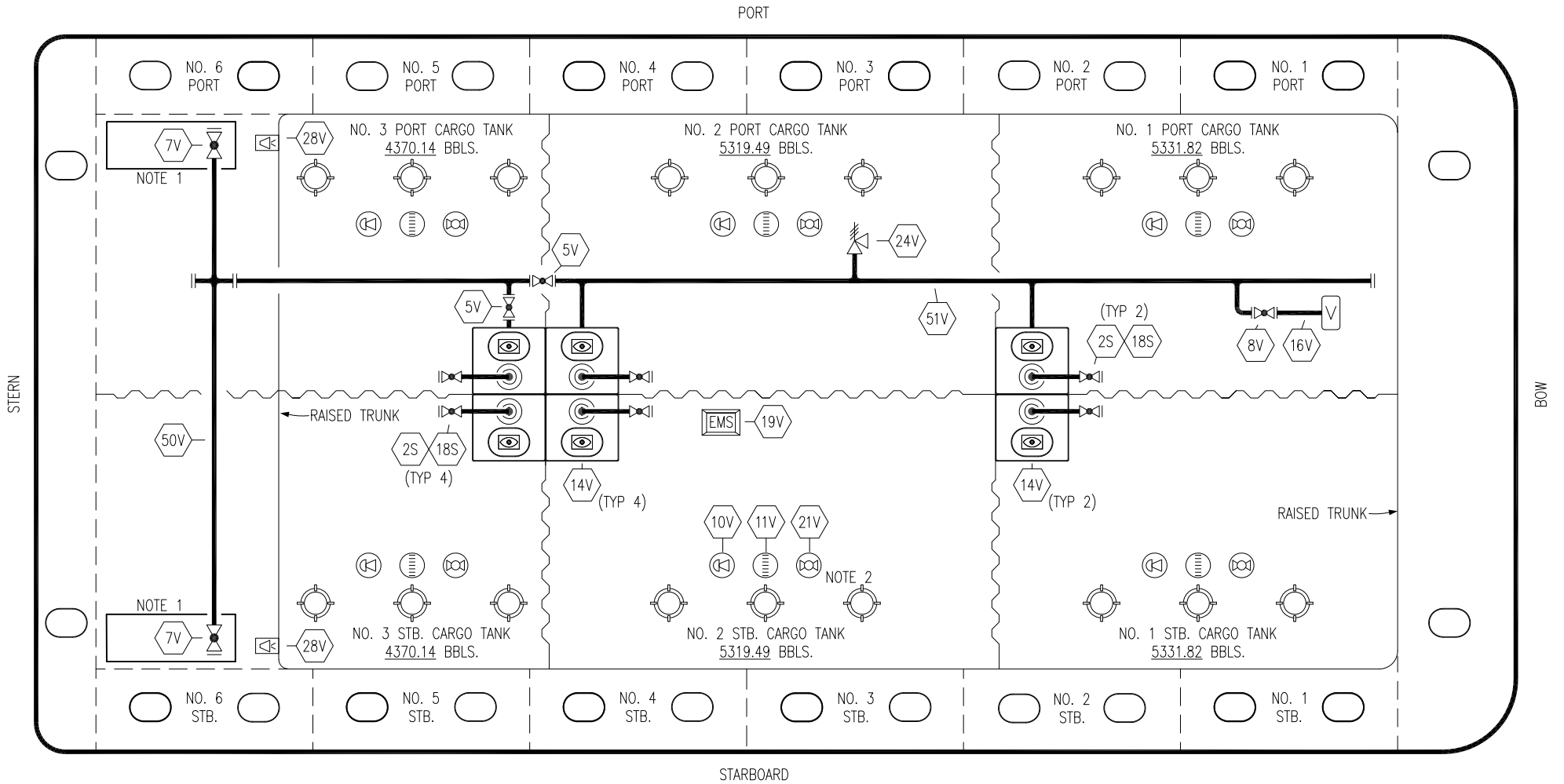
NOTE 1: CONTAINMENT P/S

0	02/19/19	MRV	DDA	ISSUED FOR APPROVAL
REV.	DATE	BY	CHK	APP
				REVISION DESCRIPTION

KIRBY INLAND MARINE 

**CARGO
PIPING FLOW DIAGRAM**

SCALE: NONE	ACT 101	REV. 0
PAGE: 1 OF 2		



- | | | | |
|-----|----------------------------|-----|--------------------------|
| NO | DESCRIPTION | NO | DESCRIPTION |
| 5V | BLOCK VALVE | 24V | PRESSURE RELIEF VALVE |
| 7V | HEADER VALVE | 28V | DOCK CONNECTION ALARM |
| 8V | VENT STACK VALVE | 50V | VAPOR HEADER |
| 10V | HIGH LEVEL/OVERFILL ALARM | 51V | VAPOR PIPELINE |
| 11V | 1-METER GAUGE STICK | 2S | CARGO SUMP SUCTION VALVE |
| 14V | SIGHT GLASS | 18S | STRIPPING DROP |
| 16V | VAPOR VENT STACK | — | ABOVE DECK PIPING |
| 19V | EMERGENCY ENGINE SHUT DOWN | | |
| 21V | HERMETIC GAUGE | | |

- | | |
|-----|--------------------------|
| NO | DESCRIPTION |
| 24V | PRESSURE RELIEF VALVE |
| 28V | DOCK CONNECTION ALARM |
| 50V | VAPOR HEADER |
| 51V | VAPOR PIPELINE |
| 2S | CARGO SUMP SUCTION VALVE |
| 18S | STRIPPING DROP |
| — | ABOVE DECK PIPING |

NOTE 2: TYPICAL RIGGING IN EACH TANK
 NOTE 1: CONTAINMENT P/S

0	02/19/19	MRV	DDA	ISSUED FOR APPROVAL
REV.	DATE	BY	CHK	APP
				REVISION DESCRIPTION

KIRBY INLAND MARINE

VAPOR PIPING FLOW DIAGRAM

SCALE: NONE	ACT 101	REV. 0
PAGE: 2 OF 2		