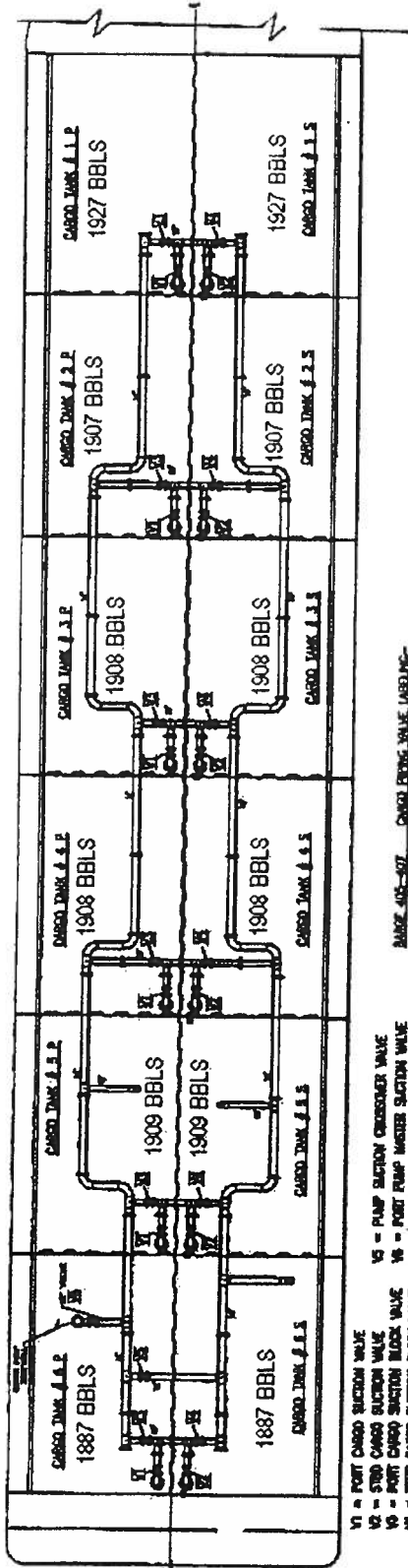
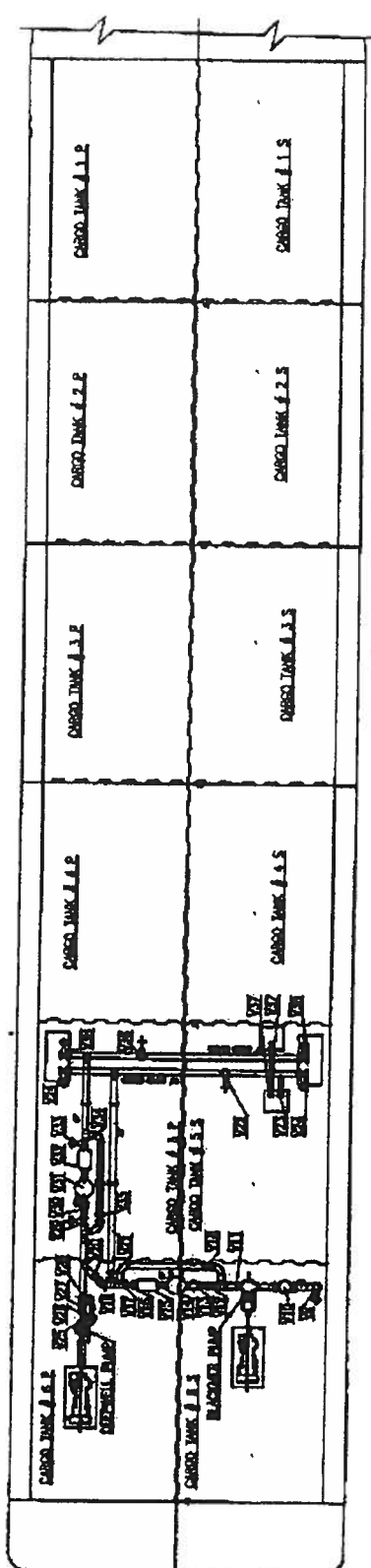


Barge Name: 405



- V1 = PORT CARGO SUCTION VALVE
- V2 = STD CARGO SUCTION VALVE
- V3 = PORT CARGO SUCTION BLOCK VALVE
- V4 = STD CARGO SUCTION BLOCK VALVE
- V5 = PUMP SUCTION CROSSOVER VALVE
- V6 = PORT PUMP WASTER SUCTION VALVE
- RANGE 405-077 CARGO PUMP VALVE LABELING - BULK DATA



- V9 = PUMP SUCTION VALVE
- V10 = DISCHARGE CHECK VALVE
- V11 = METERING SYSTEM CHECK VALVE
- V12 = METERING SYSTEM DISCHARGE VALVE
- V13 = METERING SYSTEM DISCHARGE VALVE
- V14 = AIR ELIMINATOR
- V15 = METERING SYSTEM
- V16 = METERING SYSTEM CHECK VALVE
- V17 = METERING SYSTEM DISCHARGE VALVE
- V18 = METERING SYSTEM INFLUX VALVE
- V19 = DISCHARGE CHECK VALVE
- V20 = BLACKWELL CROSSOVER CHECK VALVE
- V21 = FORWARD DISCHARGE GATE VALVE
- V22 = MAIN HEADER INT LOADING VALVE
- V23 = MAIN HEADER INT 6" DISCHARGE VALVE
- V24 = MAIN HEADER INT 10" DISCHARGE VALVE

- V25 = PUMP RELIEF VALVE
- V26 = PUMP CHECK VALVE
- V27 = PUMP EXCHANGE GATE VALVE
- V28 = RELIEF VALVE BYPASS VALVE
- V29 = METERING SYSTEM GATE VALVE
- V30 = METERING SYSTEM STANMER
- V31 = AIR ELIMINATOR
- V32 = METERING SYSTEM
- V33 = METERING SYSTEM CHECK VALVE
- V34 = METERING SYSTEM DISCHARGE VALVE
- V35 = METERING SYSTEM DISCHARGE VALVE
- V36 = MAIN HEADER INT LOADING VALVE
- V37 = MAIN HEADER INT 6" DISCHARGE VALVE
- V38 = MAIN HEADER INT 10" DISCHARGE VALVE

CARGO PUMP VALVE LABELING - BULK DATA